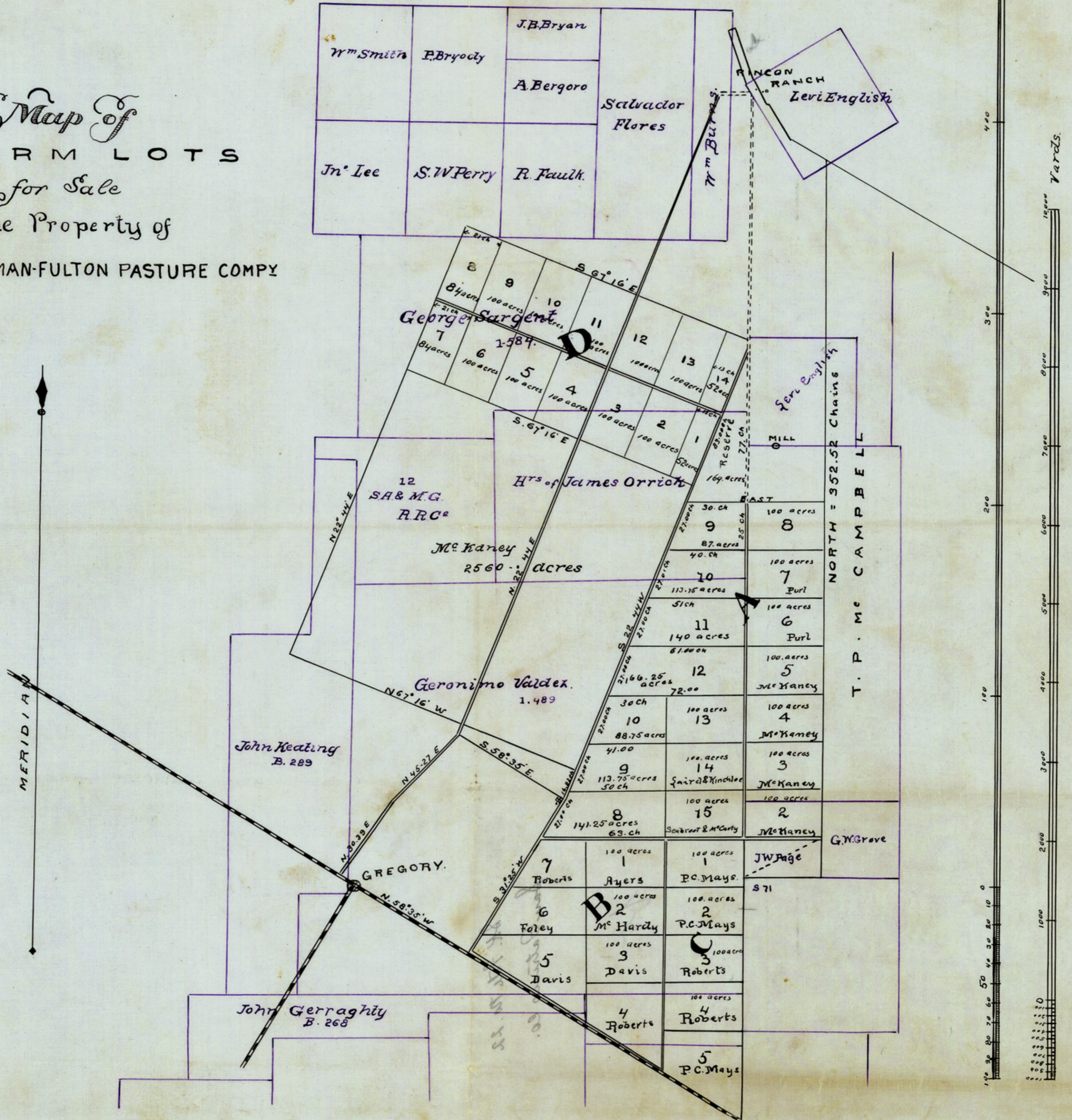


Filed in my office
 as a part of the Records
 this the 28th day of May
 A. D. 1890. at 5 O'Clock P.M.

Stev J. Lewis, clk
 San Patricio Co. Tex.

Map Of
FARM LOTS
 for Sale
 on the Property of
THE COLEMAN-FULTON PASTURE COMPY



State of Texas
 County of San Patricio

I, J.L. HAMILTON, Clerk of the County Court, do hereby certify
 that the above MAP is a true and correct copy of the MAP
 filed in Vol. 1 page 116 of the Map Records of San Patricio Co. Tex.
 Given under my hand and Seal of office this the 22nd day of July 1918.

J.L. Hamilton
 Clerk of the County Court
 SAN PATRICIO CO. TEX.