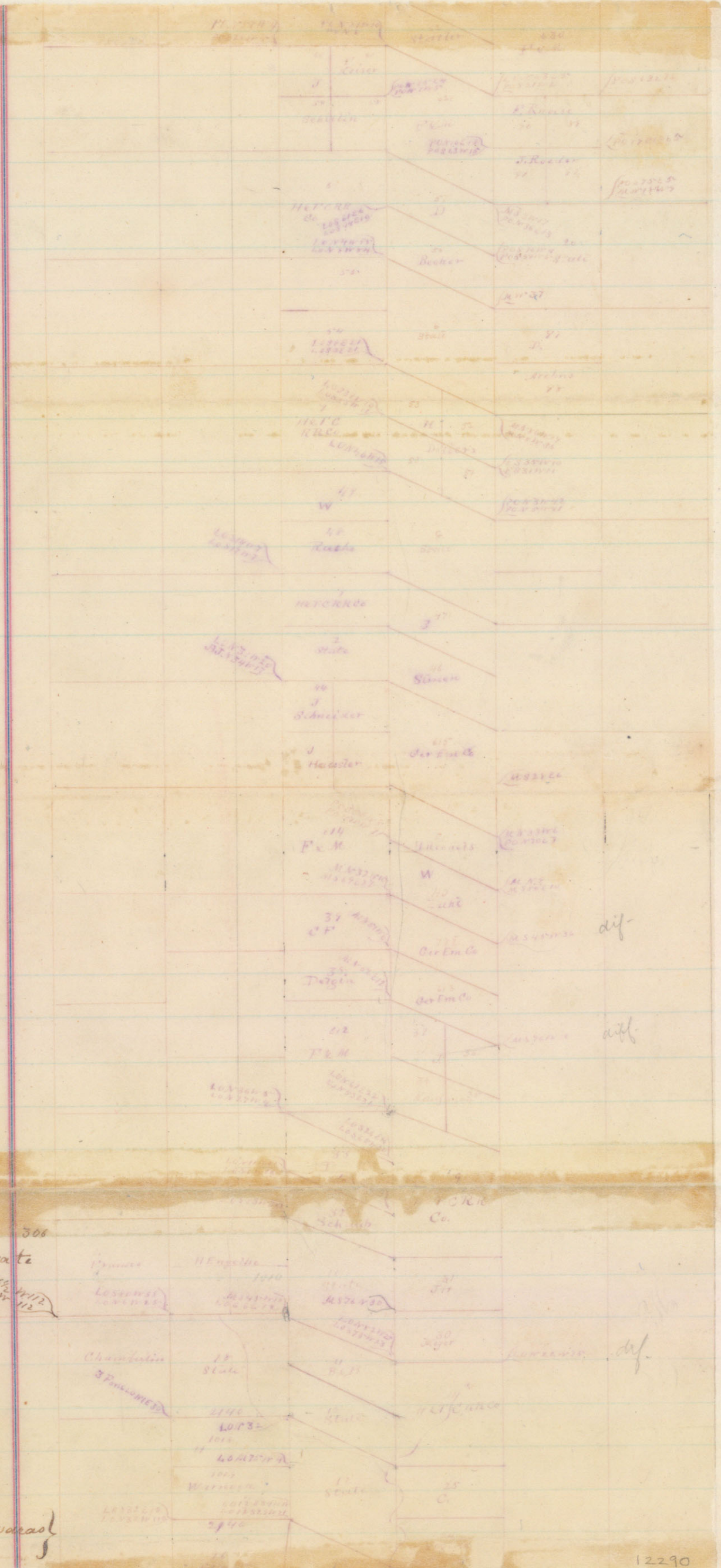
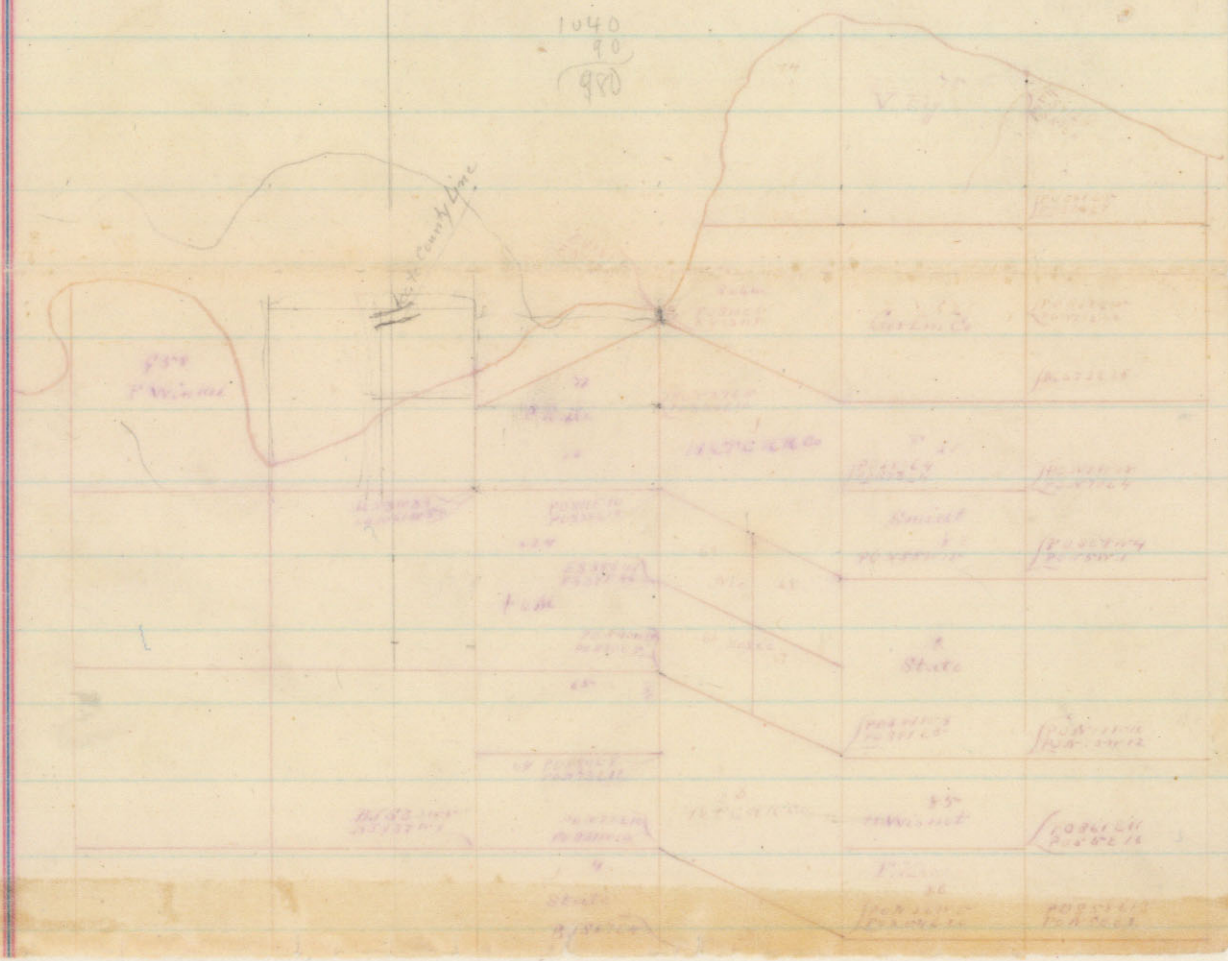


1040
90
970



11

Scale 2000 yards to the inch

I. W. L. Hayes County Surveyor of San Saba County
do hereby certify that the above sketch is true and
correct as found by actual survey made on the
ground, and the East-Line of N^o 72 in the name
of J. Schwab is only 90 varas long.

Witness my hand this 13th day of December 1883.

W. L. Hayes

County Sur. S. S. County

File: 10.

San Saba Co.

Certified sketch filed.

Decemb. 20th 1883.

D. A. Robinson

Chief Clerk.

See sketch, 6.