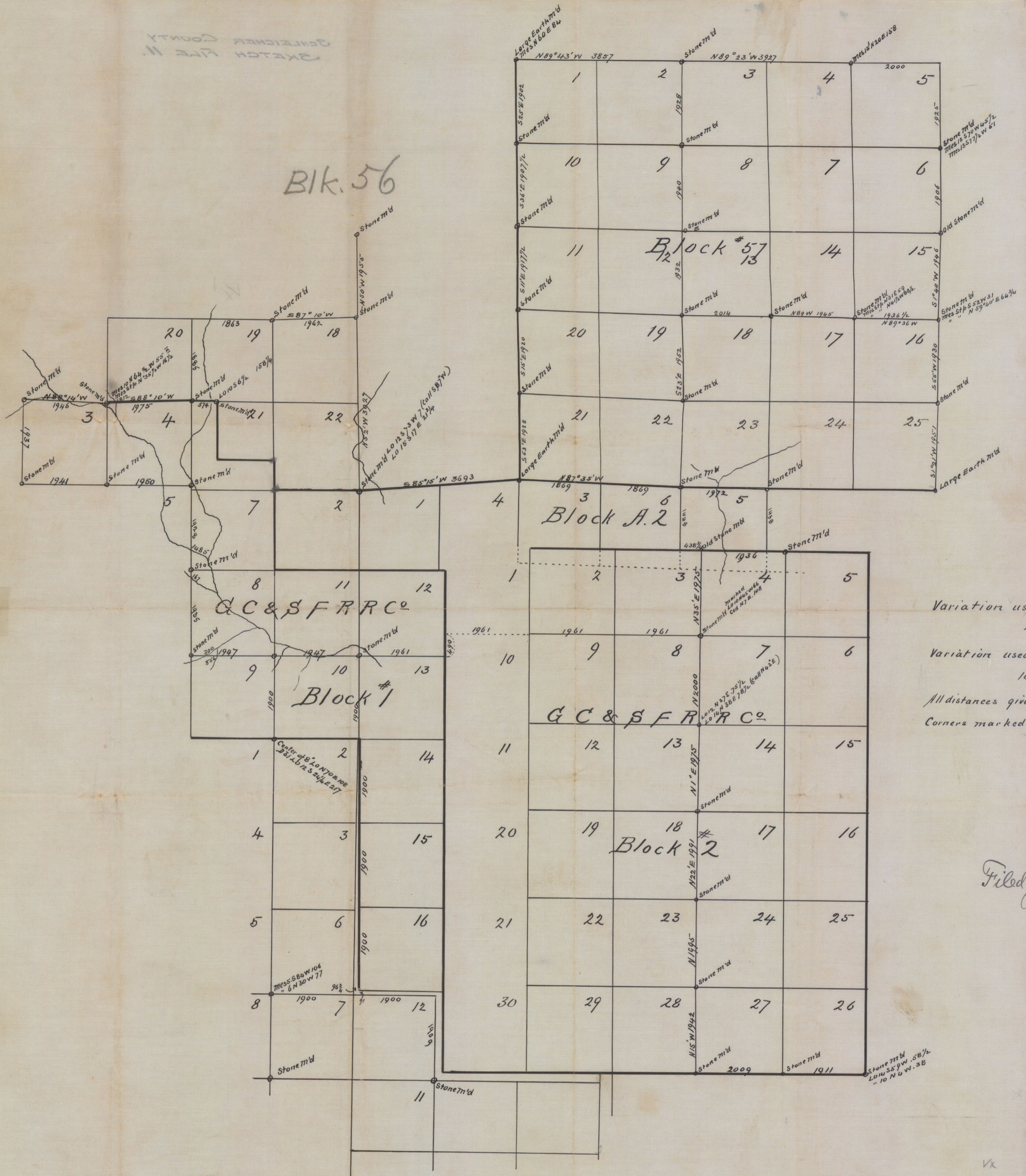


GERMANY COUNTY  
SKETCH FILE 11

Blk. 56



Sketch in SF 11804

Variation used on University Surveys  
9°51'E

Variation used on GC&S FRR. Blks 1 & 2  
10°17'E

All distances given were measured  
Corners marked were found as shown

H. M. Garder  
San Angelo  
Texas

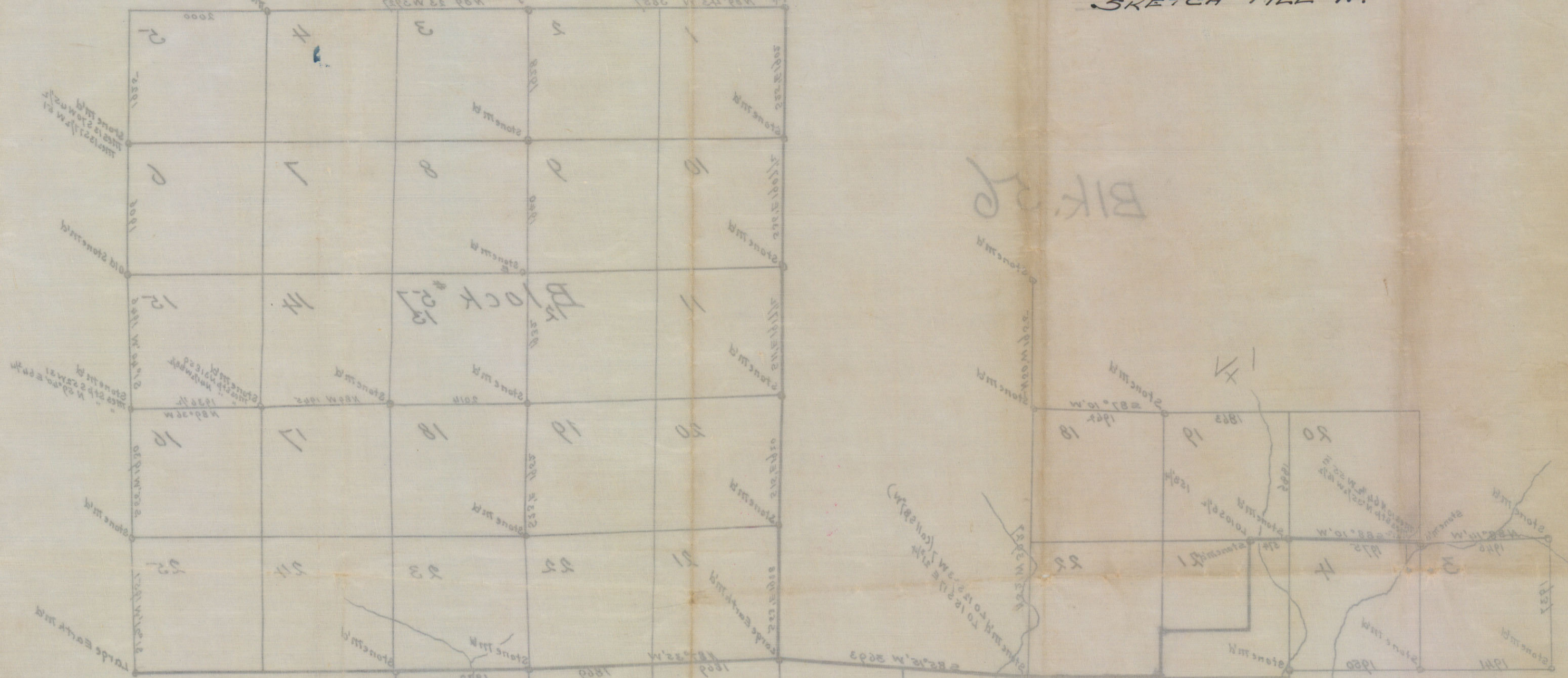
Filed January 15, 1912  
J. G. Walker  
Acting Comr.  
Ray S. von Rosenberg  
Escay. draft man

See Sketch in  
Box S 31204  
Schlischer Co  
sketch files



20811-22  
 6/1/1912

B.K. 25



Variation used on University surveys  
 9° 51' E

Variation used on G.C. & F.R. Bks 1 & 2  
 10° 17' E

All distances given were measured

Corners marked were found as shown

H.M. Gorden  
 San Angelo  
 Texas



Filed January 15, 1912  
 F. L. Walker  
 Acting Comr.  
 Schleichers  
 State - Tex.

See sketch in  
 B. & S. 210X  
 Schleichers  
 State - Tex.



H. M. GARDEN  
DISTRICT SURVEYOR FOR TOM GREEN, IRION,  
STERLING AND REAGAN COUNTIES, TEXAS

WHAT DO YOU WANT TO TRADE FOR?  
WHAT HAVE YOU TO TRADE?

E. J. FARR  
PRESIDENT SAN ANGELO  
REAL ESTATE EXCHANGE

*HM* GARDEN & FARR  
REAL ESTATE BROKERS  
AND SURVEYORS

REFERENCE: WESTERN NATIONAL BANK, SAN ANGELO

WE HAVE FOR SALE 1,000,000 ACRES OF FINE  
FARM AND RANCH LAND IN WESTERN TEXAS  
IN TRACTS OF 160 ACRES AND UP

WE HAVE  
SAN ANGELO CITY PROPERTY  
IMPROVED AND UNIMPROVED  
FOR SALE

WE ARE SELLING AGENTS FOR AND STOCKHOLDERS  
IN THE NEW COUNTY SEAT TOWNS OF MERTZON  
IN IRION COUNTY AND ELDORADO IN  
SCHLEICHER COUNTY

SAN ANGELO, TEXAS.

1/12/12

M<sup>r</sup> E. Von Rosenberg.  
Austin Texas

RECEIVED

JAN 15 1912

Referred to Map

Dear Sir

I herewith enclose you sketch of survey made  
showing connections between University surveys and  
Blocks 1 & 2 of C & S F RR to the south in Schleicher  
and Crockett Counties.

Trusting that it may be of some help to you at some future  
time and with best regards

Yours Truly,

H. M. Garden

Perfectly correct  
referred to Gen. S. T.  
to be in course of G. & O.  
July 15/1912  
E. von Rosenberg

EX 2



E. J. FARR  
PRESIDENT SAN ANGELO  
REAL ESTATE EXCHANGE

3 X 1

WHAT DO YOU WANT TO TRADE FOR?  
WHAT HAVE YOU TO TRADE?

GARDEN & FARR  
REAL ESTATE BROKERS  
AND SURVEYORS

REFERENCE: WESTERN NATIONAL BANK, SAN ANGELO

WE HAVE  
SAN ANGELO CITY PROPERTY  
IMPROVED AND UNIMPROVED  
FOR SALE

H. M. GARDEN  
DISTRICT SURVEYOR FOR TOM GREEN, IRION,  
WARRANTING AND REAGAN COUNTIES, TEXAS

WE HAVE FOR SALE 1,000,000 ACRES OF FINE  
FARM AND RANCH LAND IN WESTERN TEXAS  
IN TRACTS OF 160 ACRES AND UP

WE ARE SELLING AGENTS FOR AND STOCKHOLDERS  
IN THE NEW COUNTY SEAT TOWN OF MERTON  
IN IRION COUNTY AND ELDORADO IN  
SCHLEICHER COUNTY

SAN ANGELO, TEXAS.

1/12/12  
1/12/12

17#

Schleicher Co

11

RECEIVED

JAN 12 1912

Returned to Map

Showing connections between University surveys and  
Block 1 & 2 of 68 & 69 to the south in Schleicher  
and Crockett Counties.  
Wishing that in way of some help to you or some other  
man look with best regards

Yours truly,  
H. M. Garden

Perfect to Gen. J. J. ...  
Gen. J. J. ...  
Gen. J. J. ...



Schleicher County  
Sketch by H. M. Garden  
Block no. 2, G. C. & S. F. Ry. Co.  
Block no. 57, Univ. of Texas.

Sketch 11  
Schleicher Co.

Schleicher County  
Sketch by H. M. Garden.  
S.W. Corner on line Crocker  
Block no. 2 G. C. & S. F. Ry. Co.  
&  
Block no 57, Univ. of Tex.  
Jan. 15 1912.

GENERAL LAND OFFICE  
AUSTIN, TEXAS



11  
V+

88254