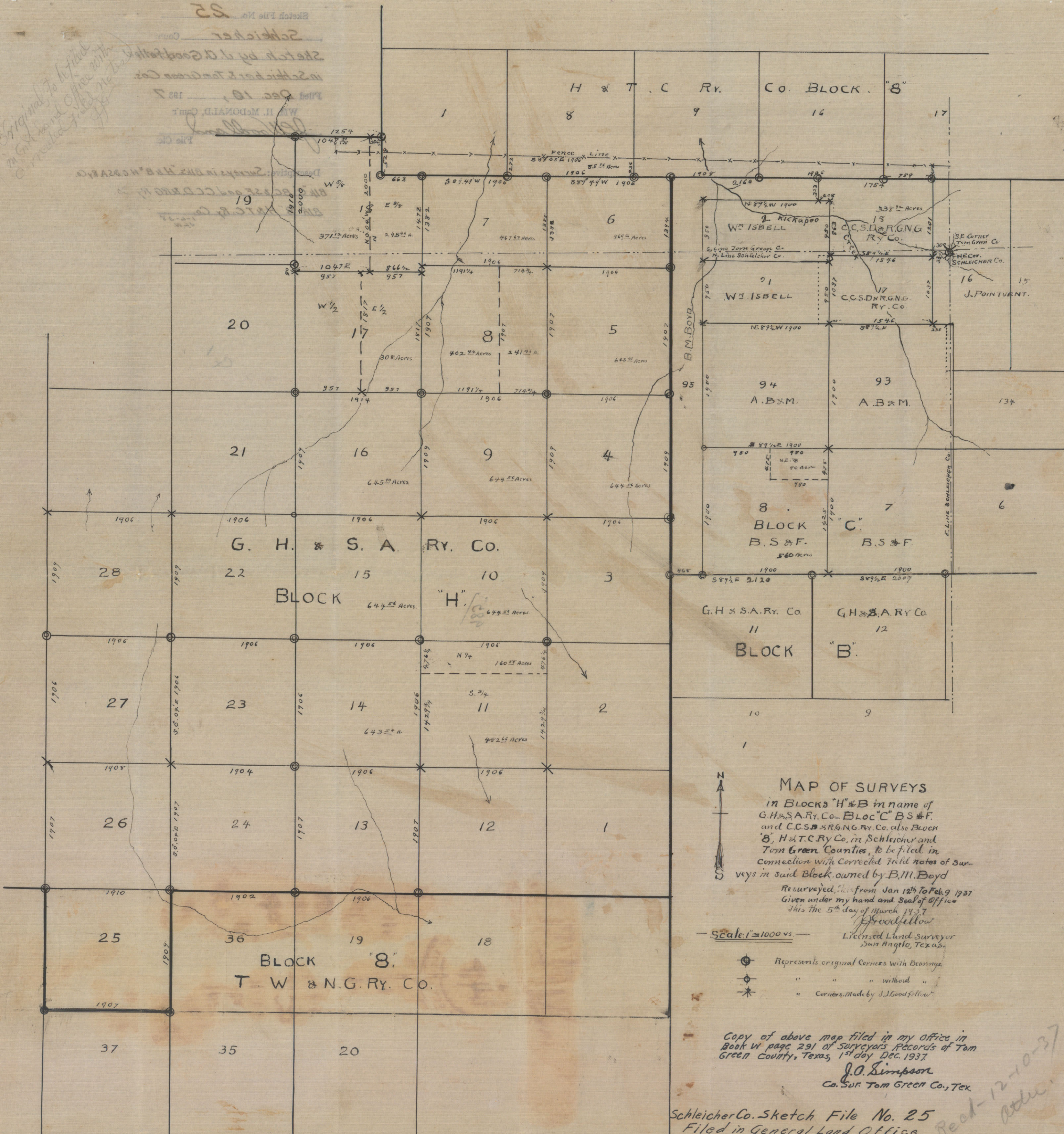


Original to be filed in General Land Office with corrected field notes
 Sketch File No. 25
 Schleicher Co.
 Sketch by J. Goodfellow
 in Schleicher & Tom Green Co.
 Filed Dec. 10, 1937
 Wm. H. McDonald, Comm'r.
 File No.



MAP OF SURVEYS
 in Blocks "H" & "B" in name of
 G.H. & S.A. RY. CO. - Block "C" B.S. & F.
 and C.C.S.D. & R.G.N.G. RY. CO. also Block
 "B", H. & T. C. RY. CO. in Schleicher and
 Tom Green Counties, to be filed in
 connection with corrected field notes of Sur-
 veys in said Block, owned by B.M. Boyd
 Resurveyed, this from Jan 12th to Feb. 9 1937
 Given under my hand and Seal of Office
 This the 5th day of March 1937
 J. Goodfellow
 Licensed Land Surveyor
 San Angelo, Texas.

Scale: 1" = 1000' vs

- ⊙ Represents original Corners with Bearings.
- ⊙ " " " without "
- * " Corners made by J. Goodfellow

Copy of above map filed in my office in
 Book W page 291 of Surveyors Records of Tom
 Green County, Texas, 1st day Dec. 1937
 J.O. Simpson
 Co. Sur. Tom Green Co., Tex.

Schleicher Co. Sketch File No. 25
 Filed in General Land Office
 December 10, 1937
 Wm. H. McDonald, Comm'r.
 Reel-12-10-37
 attch.
 CX 12304

Sketch File No. 25

Schleicher Coun.

Sketch by J. D. Goodfellow

in Schleicher & Tom Green Co's.

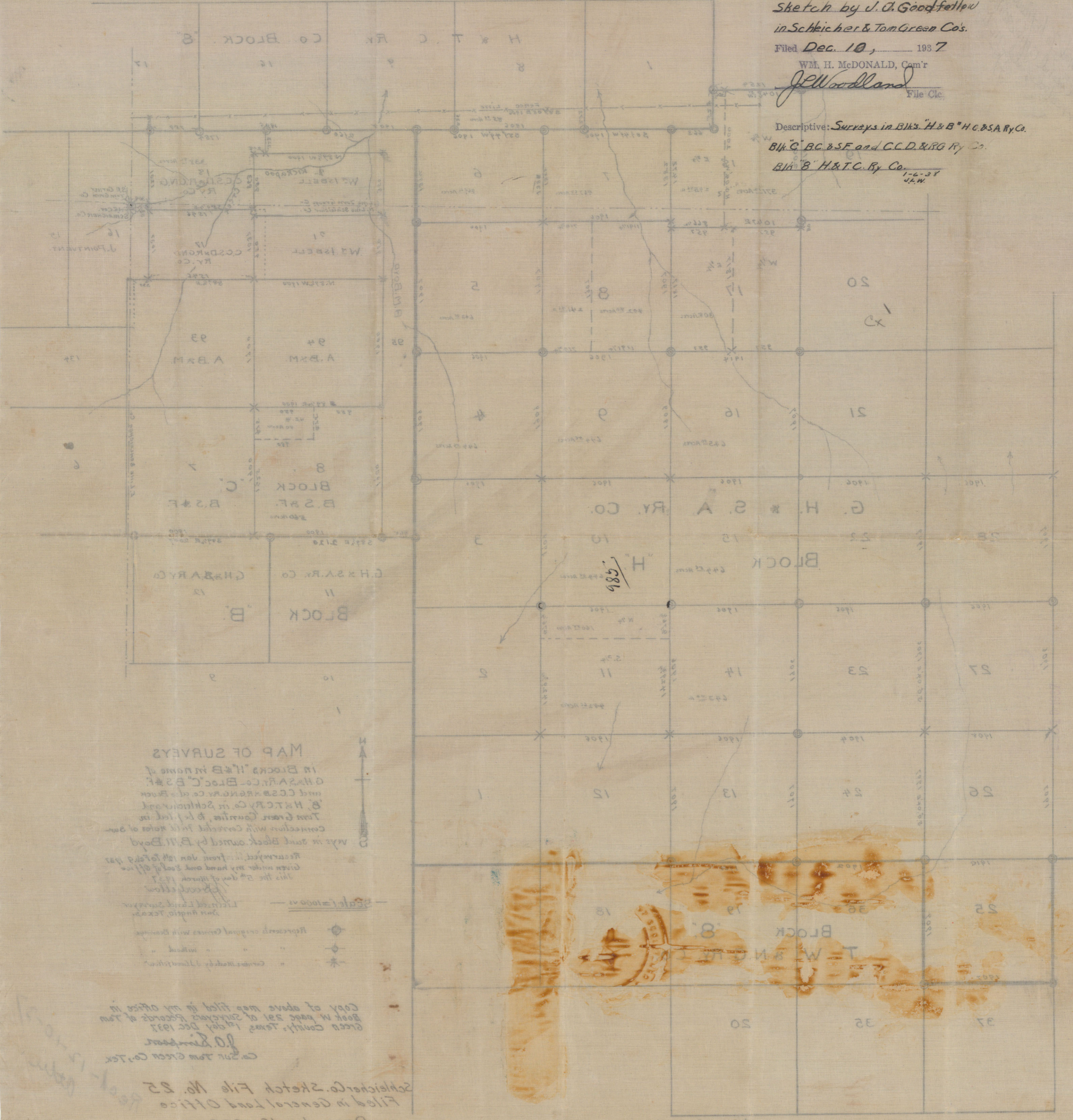
Filed Dec. 10, 1937

WM. H. McDONALD, Com'r

W. H. Woodland
File Clk.

Descriptive: Surveys in Blk's H & B H.C. & S.A. Ry. Co.
Blk's C B.C. & S.F. and C.C. & R.G. Ry. Co.
Blk's B H & T.C. Ry. Co.

1-6-37
J.H.W.



MAP OF SURVEYS
in Blocks H & B in name of
G.H.S. Ry. Co. - Block C & S.F.
and C.C. & R.G. Ry. Co. in Block
& H.T.C. Ry. Co. in Block
Tom Green County, Texas
W. H. Woodland, Com'r
W. H. Woodland, Com'r

Copy of above map filed in my office in
Book W page 251 of surveys records of Tom
Green County, Texas for day Dec 10 1937
P.O. Simpson
Comm. Tom Green Co., Tex.
Schleicher Co. Sketch File No. 25
Filed in General Land Office
December 10 1937

The State of Texas ∅
 ∅
County of Schleicher ∅

I, John F. Isaacs, Clerk County Court in and
a copy of the
for Schleicher County, Texas, hereby certify that ~~the~~/foregoing plat
was filed in this office on the 3rd day of December, 1937, at 1 o'clock
P. M., and duly recorded in Volume 3, Page 255, Surveyors Records
of Schleicher County, Texas.

Witness my hand and seal of the County Court on this the 6th day
of December, A. D., 1937.

John F. Isaacs, Clerk County Court,
Schleicher County, Texas.

CX