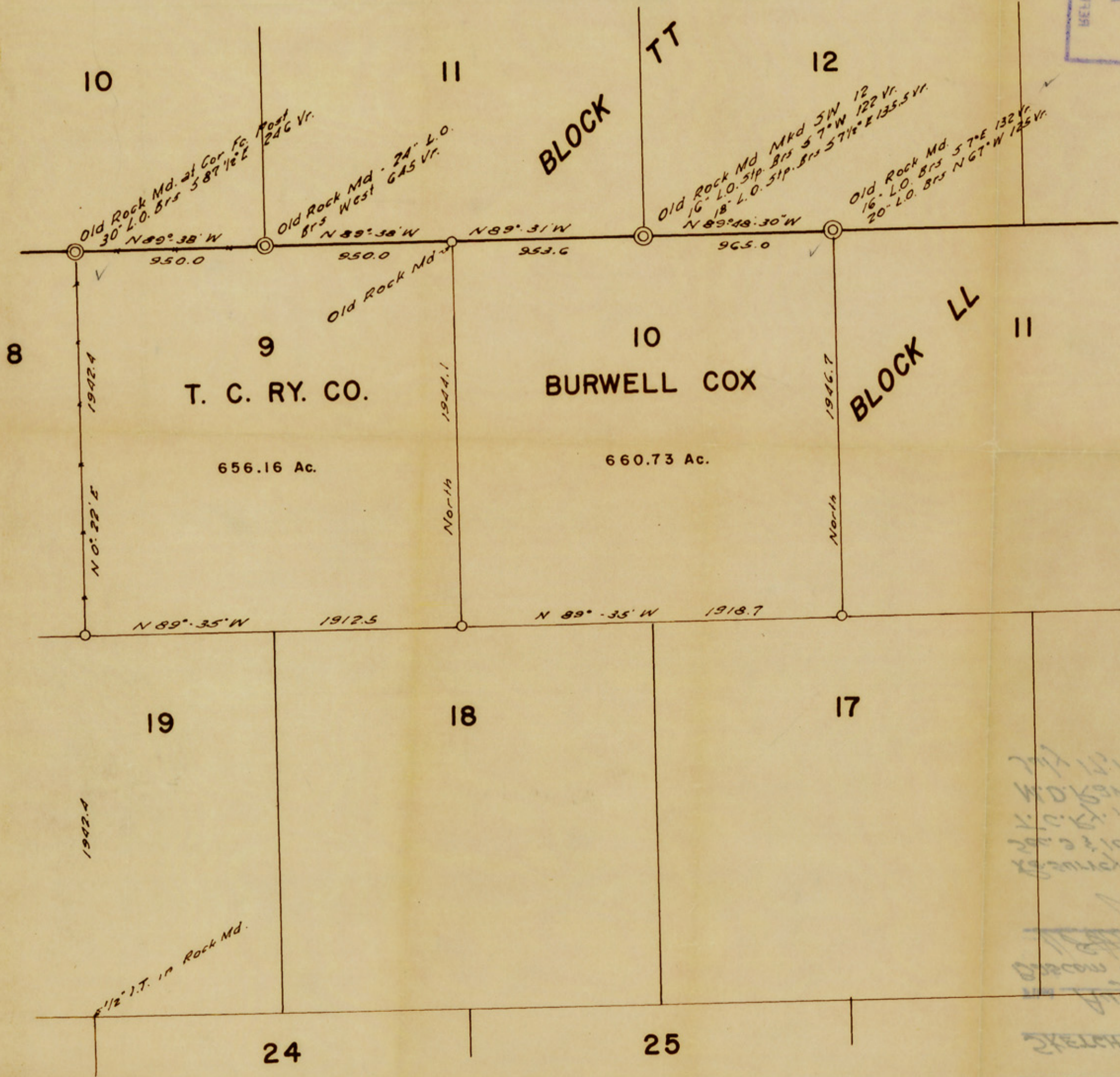


RECEIVED TO SCHOOL  
AUG 30 1881  
RECEIVED



SCALE: 1 IN = 500 VR.

⊙ ORIGINAL CORNERS  
○ CORNERS SET

MAP SHOWING A RESURVEY OF PART OF  
SCHLEICHER COUNTY, TEXAS.

MADE FOR

W. W. BARBER

SURVEYED BY ME ON THE GROUND JULY 17, 1951.

*M. D. Rawls*  
M. D. RAWLS - LICENSED STATE LAND SURVEYOR.

J. A. SIMPSON & SON - SAN ANGELO

D-308