

T. C. MEADOR RANCH  
SCHLEICHER COUNTY, TEXAS.

SURVEYED BY ME ON THE GROUND IN FEB. & MAR., 1952.

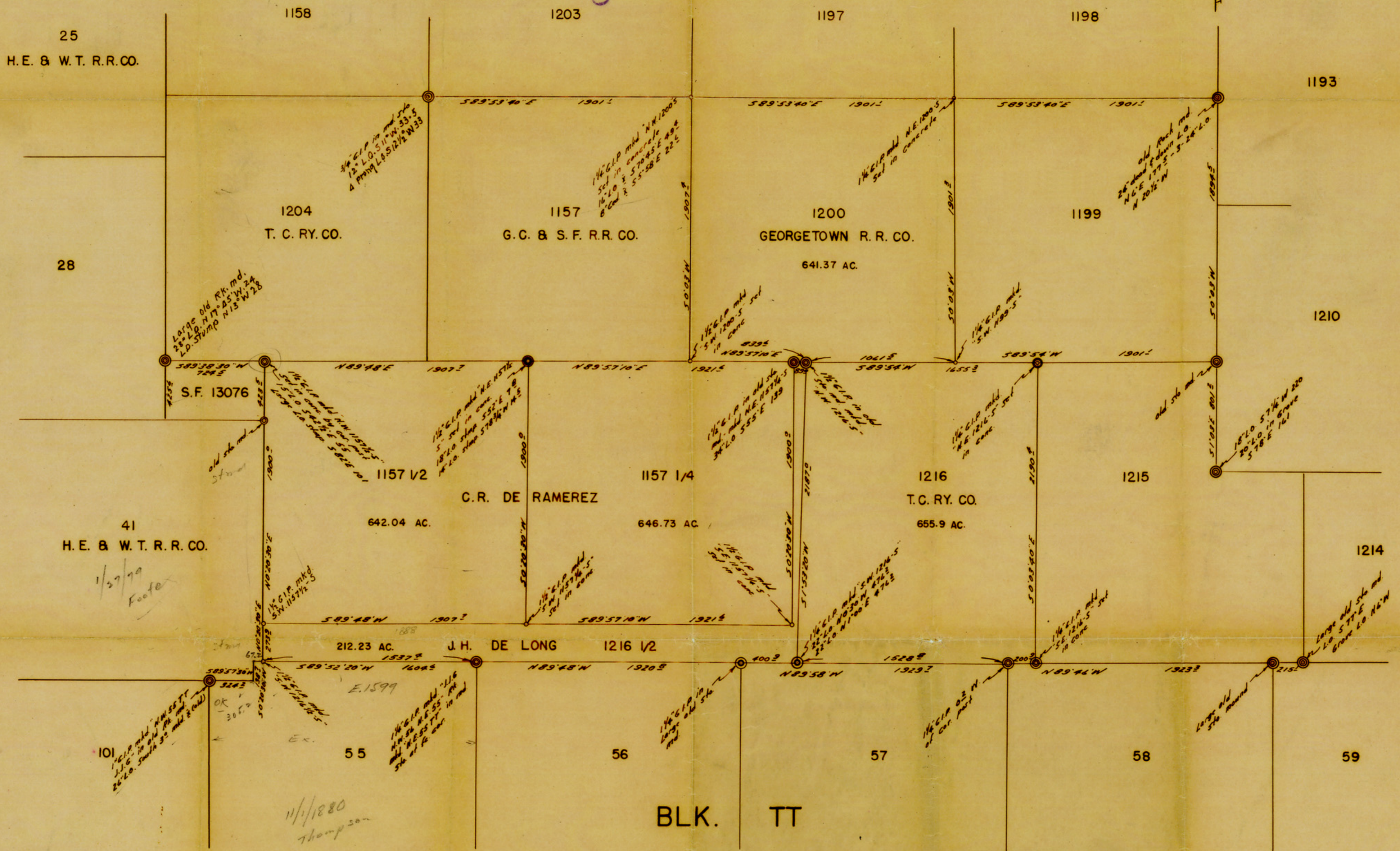
*J. A. Simpson*  
LICENSED STATE LAND SURVEYOR

— LEGEND —

- Original corners found.
- Re-survey corners found.
- Corners set.

RECEIVED  
FEB 11 1952  
PLANNED TO MAP

Scale: 1" = 500 yds.



BLK. TT  
T. C. RY. CO.

*1225*  
*1226*  
*1227*  
*1228*  
*1229*  
*1230*  
*1231*  
*1232*  
*1233*  
*1234*  
*1235*  
*1236*  
*1237*  
*1238*  
*1239*  
*1240*  
*1241*  
*1242*  
*1243*  
*1244*  
*1245*  
*1246*  
*1247*  
*1248*  
*1249*  
*1250*

#37