

Sketch of part of the lands in the N.W. part of Shackelford Co. as they exist on the ground, as evidenced by the original corners found and by the notes of the original locators.

Red circles (O) indicate corners known to be original.

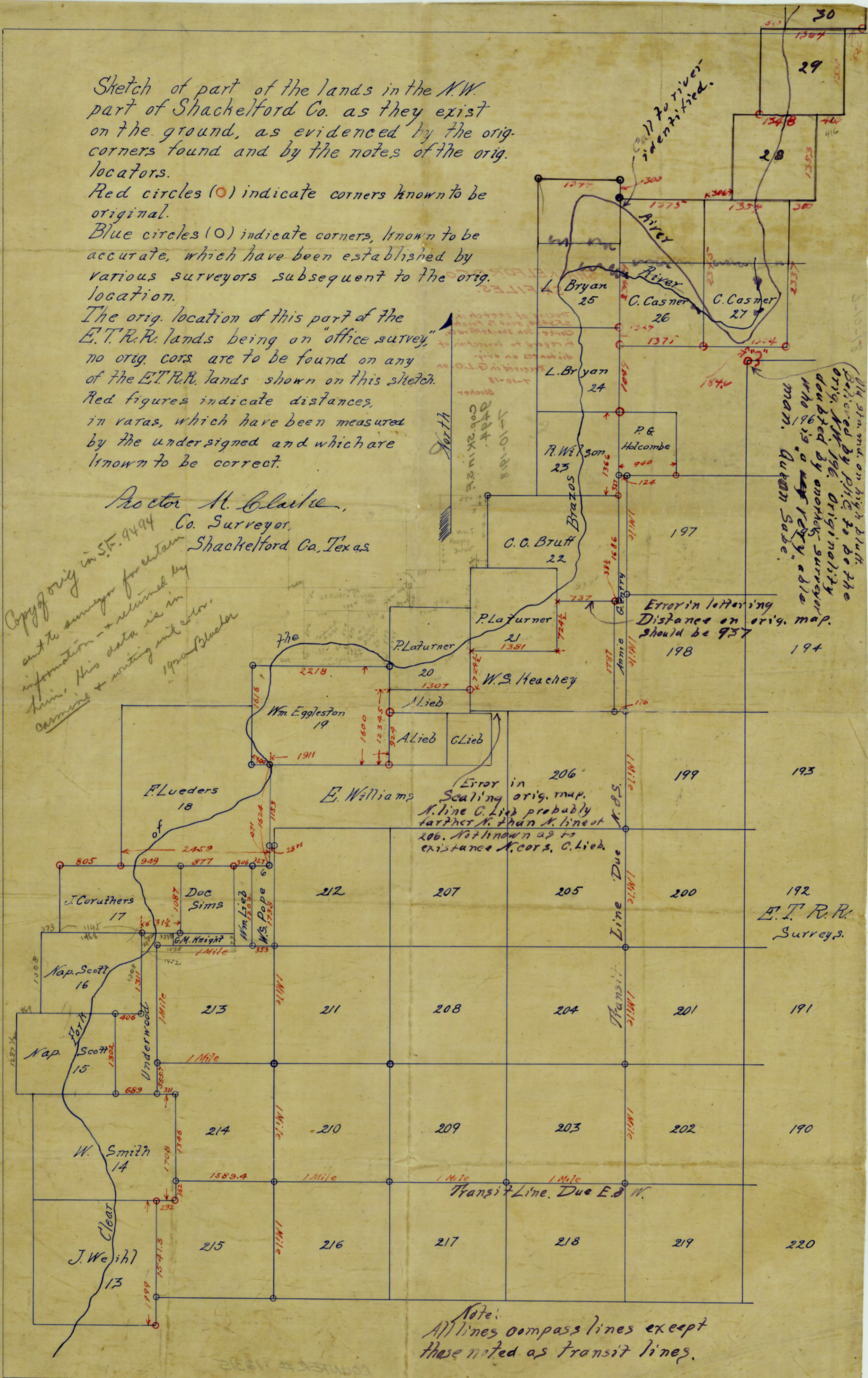
Blue circles (O) indicate corners, known to be accurate, which have been established by various surveyors subsequent to the original location.

The original location of this part of the E.T.R.R. lands being on "office survey," no original corners are to be found on any of the E.T.R.R. lands shown on this sketch.

Red figures indicate distances, in varas, which have been measured by the undersigned and which are known to be correct.

Proctor M. Clarke,
Co. Surveyor,
Shackelford Co., Texas.

Copy of orig. in S.F. 9494 sent to surveyor for certain information - returned by him. His data is in varas + writing with color. 1900 Bluecher



Old plan. on high bluff. Believed by Picke to be the orig. 1876. Originality doubted by another surveyor who is a very able man. Aukon Sabe.

Error in lettering Distance on orig. map. should be 937

Error in Scaling orig. map. N. line C. Lieb probably farther N. than N. line of 206. Not known as to existence N. cor. C. Lieb.

Note: All lines compass lines except those noted as Transit lines.