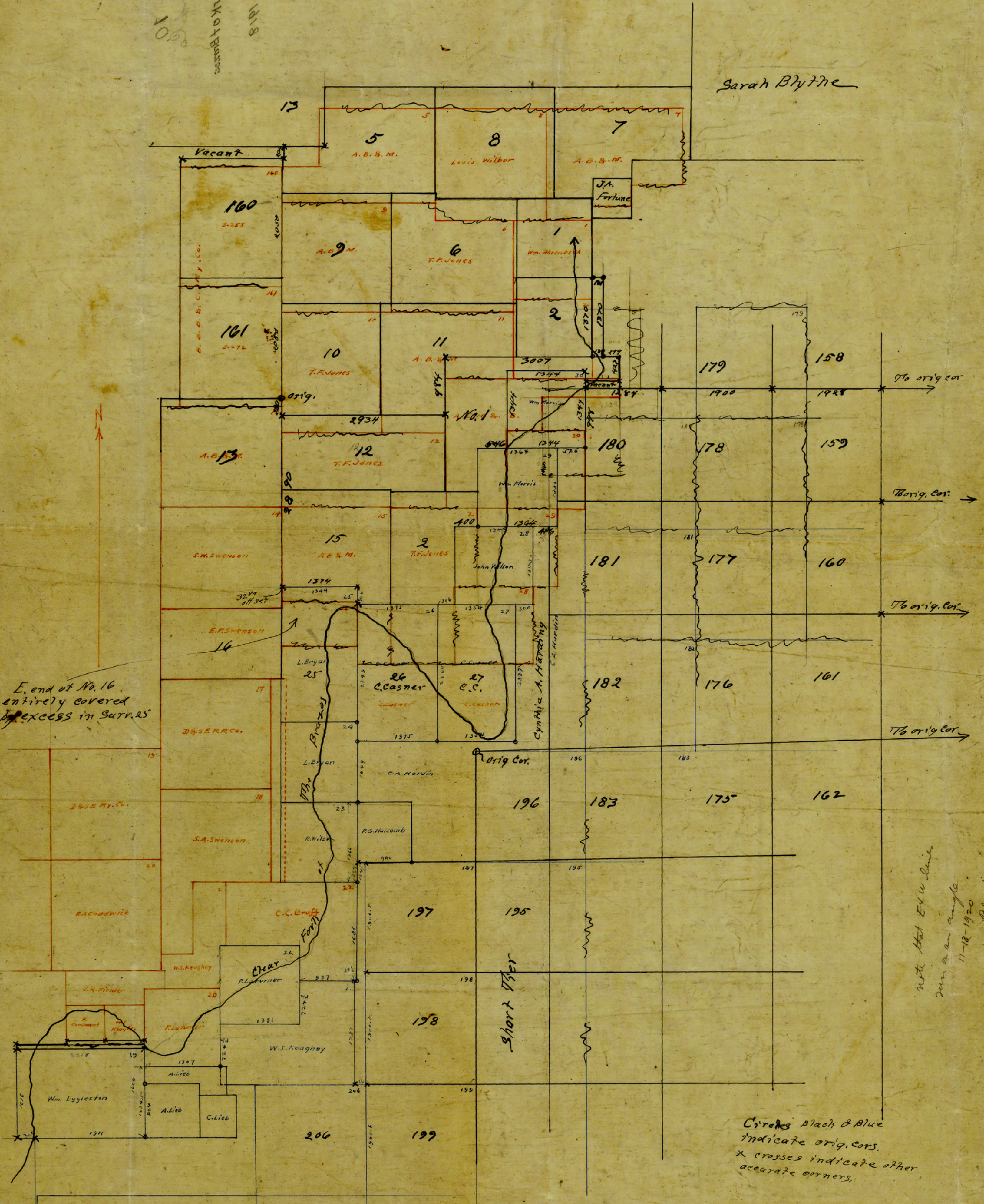


Based on 30' 1818  
of 1850  
2X on Clear Fork Arkansas  
River

100

810

Sarah Blythe



E. end of No. 16  
entirely covered  
by excess in Sarr. 25

Note that EX W. line  
was on an angle  
11-18-1900  
Plumb

Circles black & blue  
indicate orig. cors.  
x crosses indicate other  
accurate corners.

SCALE 1 INCH = 1000 YARDS.  
General Land Office August 24, 1916