

STARR COUNTY SKETCH

SHOWING

Actual Position of Survey No 823, as Found by E.J. Foster
 Licensed Land Surveyor, 1-21-24-1933.
 Scale 1" = 300 vrs.

State of Texas }
 County of Starr }

I. E. J. Foster a Licensed land surveyor
 do hereby certify that the above and foregoing is a
 true and correct map of the position of surveys Nos.
 823, 86, 85, 344, 375 and the North lines of Porciones
 74-75-76 and 77 as found by me on the ground from
 actual survey. That the S.W. Cor. of survey 304 is the
 original corner as found by its witness tree. That
 the corners of 375 are also its original corners.
 That the above is true and correct just as it is on
 the ground from actual survey made by me Jan. 20-24-
 1933.

Given under my hand and seal of office, this the 26
 day of January A.D., 1933.

E. J. Foster
 Licensed Land Surveyor.



Bb



Sketch File No. 27

Starr County
E. J. Foster's Sk. Vicinity of
Sur 23-86-344 & Section 74

Filed February 8th 1933

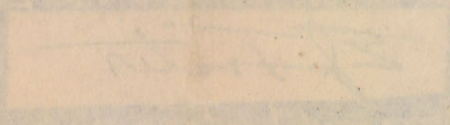
J. H. Walker, Comm.
C. F. Blucher
File Clerk

Descriptive: 1 1/2 Mi. N 25° W of
Rio Grande City.

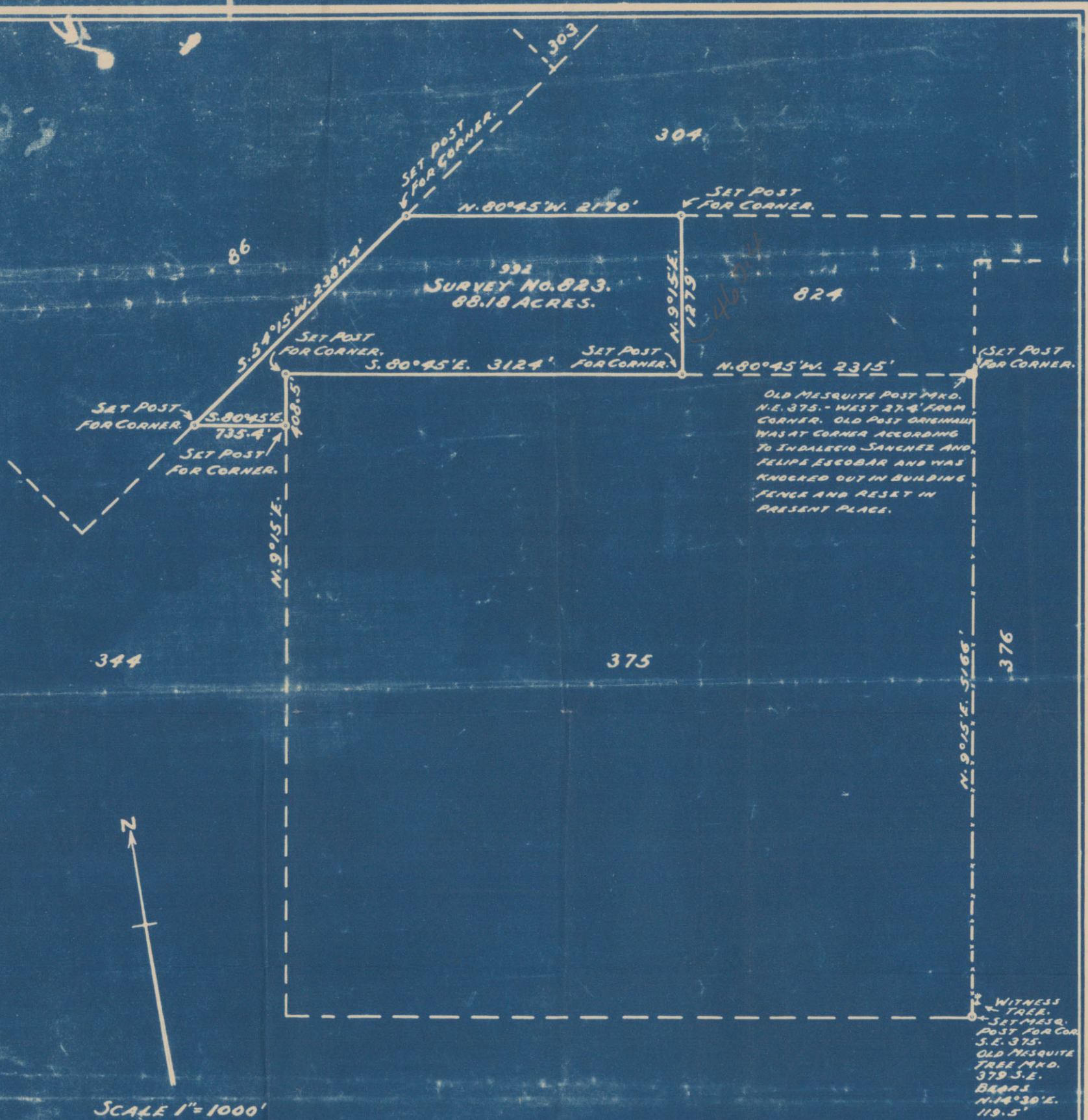
See Sk. File 28 for statement.
Compare with Dada Work. See Sk. Files 23-24-25

STARR COUNTY SKETCH

Bb'



2/8/33



OLD MESQUITE POST MKD.
 N.E. 375. - WEST 27.4' FROM
 CORNER. OLD POST ORIGINALLY
 WAS AT CORNER ACCORDING
 TO INDALCIO SANCHEZ AND
 FELIPE ESCOBAR AND WAS
 KNOCKED OUT IN BUILDING
 FENCE AND RESET IN
 PRESENT PLACE.

WITNESS
 TREE.
 SET MESQ.
 POST FOR COR.
 S.E. 375.
 OLD MESQUITE
 TREE MKD.
 379 S.E.
 BEARS
 N. 14° 30' E.
 119.5'

SCALE 1" = 1000'

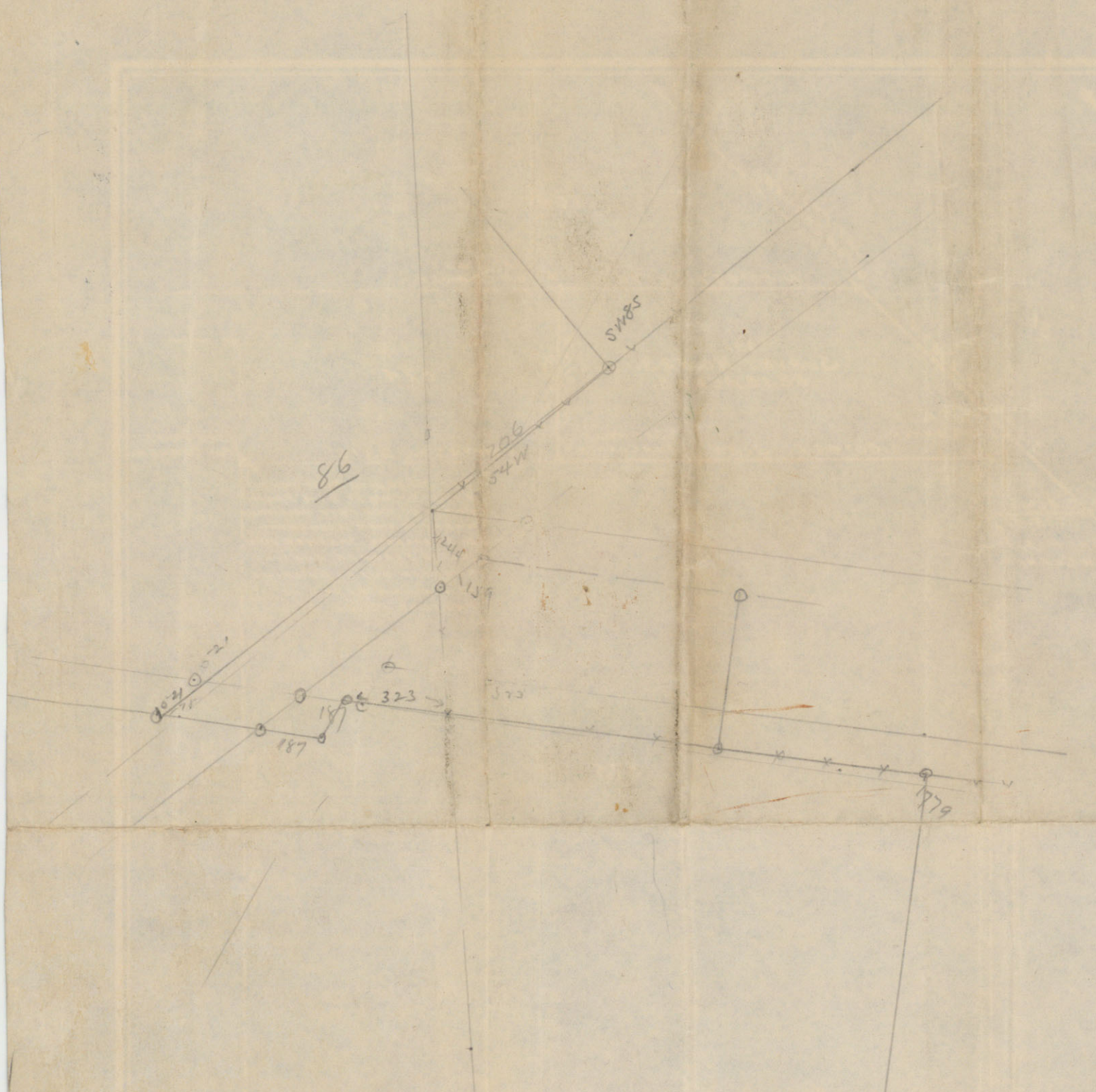
I, J. H. SELLECK, COUNTY SURVEYOR, STARR COUNTY, TEXAS, DO HEREBY CERTIFY THAT THE FOREGOING SURVEY WAS MADE BY ME ON THE GROUND AND ACCORDING TO LAW, THAT THE LIMITS, BOUNDARIES, AND CORNERS WITH MARKS, NATURAL AND ARTIFICIAL, ARE TRULY DESCRIBED IN THIS MAP, JUST AS I FOUND THEM ON THE GROUND.

SURVEYED MARCH, 3 TO 5, INC., 1930.

MAP MADE MARCH 6, 1930.

J. H. Selleck,
 COUNTY SURVEYOR,
 STARR COUNTY, TEXAS,
 RIO GRANDE CITY, TEXAS.

SANFORD RICABY & CO.
 ENGINEERING CONTRACTORS,
 RIO GRANDE CITY, TEXAS.



STARR CD # 27 SK.F.