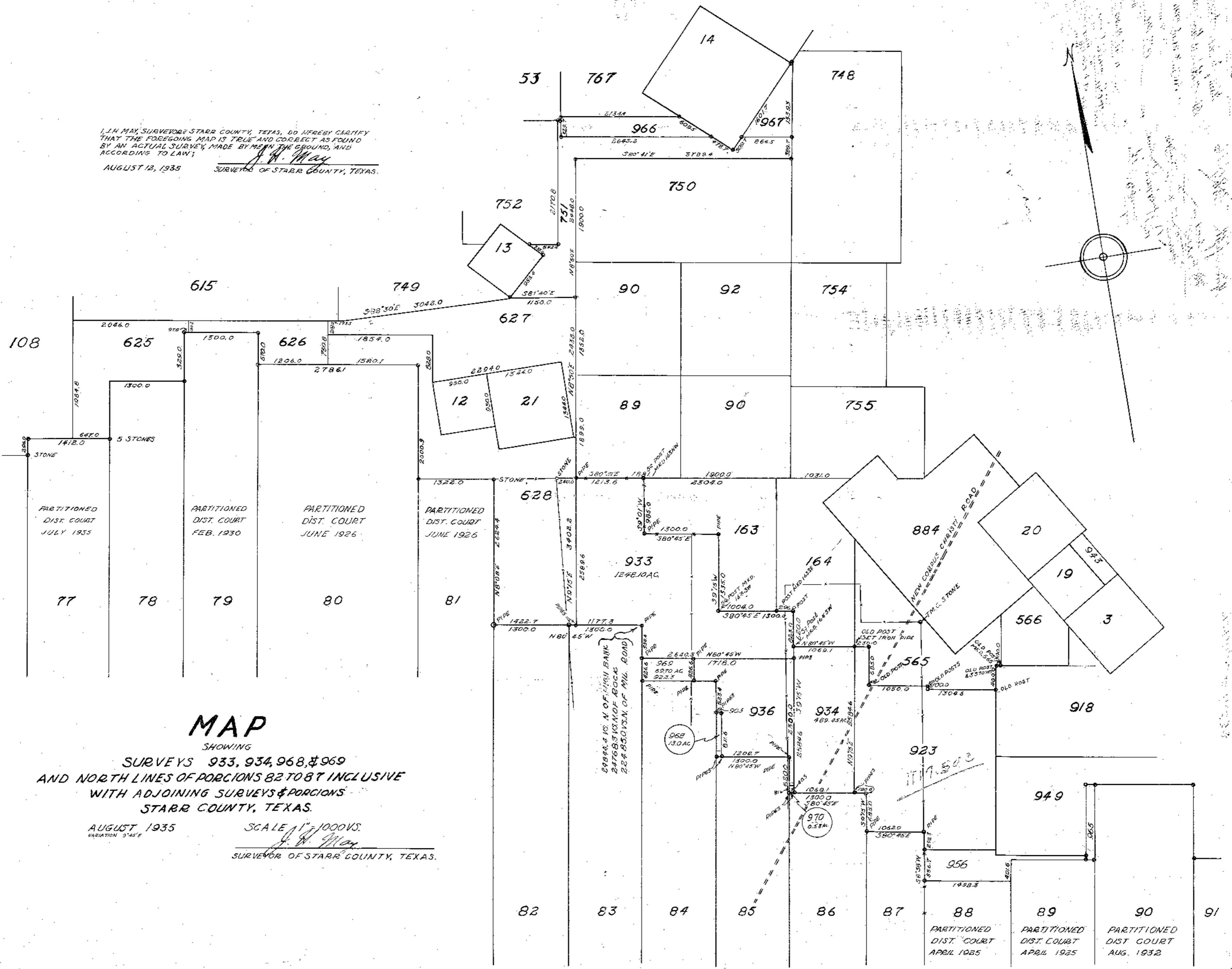


I, J. H. MAY, SURVEYOR STARR COUNTY, TEXAS, DO HEREBY CERTIFY THAT THE FOREGOING MAP IS TRUE AND CORRECT AS FOUND BY AN ACTUAL SURVEY MADE BY ME IN THE GROUND, AND ACCORDING TO LAW.
J. H. May
 AUGUST 12, 1935 SURVEYOR OF STARR COUNTY, TEXAS.



MAP

SHOWING

SURVEYS 933, 934, 968, & 969
 AND NORTH LINES OF PORCTIONS 82 TO 87 INCLUSIVE
 WITH ADJOINING SURVEYS & PORCTIONS
 STARR COUNTY, TEXAS.

AUGUST 1935
 VARIATION 9°45'E

SCALE 1" = 1000 FT.
J. H. May
 SURVEYOR OF STARR COUNTY, TEXAS.