

AUG 13 1941

1243

To the  
Hon. Bascom Giles,  
Commissioner General Land Office.

REFERRED TO MAP

August 4, 1941.

Report of a resurvey of survey  
No. 276 and the North and West  
lines of the Las Comitas Grant.

Object of survey, to determine that part of Survey No. 276  
out of conflict with the Las Comitas Grant.

Made for A.C. Jones by virtue of his ownership.

Data for survey, from the records of the County Surveyors  
of Starr County, and the records of the Partition of the Las  
Comitas Grant, also a report made for the District Court of Starr  
County, by E.M. Card dated Feb. 12, 1921, and from field notes, Maps  
and corners and lines established by J.G. Roberts (Engineer  
for the Sun Oil CO.) on the ground.

Beginning my survey at 5 large stones from whence a Mes-  
quite Stump bears S. 85-00'E. 13 vrs. in the West line of the  
La Sal Colorado Grant, the S.E. corner of the Agua Nueva de  
Abajo Grant, For the N.E. corner of the Las Comitas Grant, I  
have known this corner for the past 8 or 10 years, and it has  
long been recognized as said corners, Said corner being in the  
North line of Starr County and South line of Jim Hogg County.

Thence with said county lines an the North line of Las Comitas  
and South line of Agua Nueva de Abajo Grant, N. 89-40'W. at  
1581 vrs. pass Concrete County line post, at 5083.1 vrs pass  
a stone well planted in the ground for a share corner, at 5385  
vrs. pass county line post, at 7281.7 vrs. another, at 9182.1 vrs.  
another, at 11022.2 vrs. another county line post, at 12000 vrs.  
an iron rod for the N.W. corner of the Las Comitas Grant, from  
whence a Mesq. mkd. X Brs. N. 6-10'E. 20 vrs. another brs. S. 76-30'E.  
22.6 vrs. (New marks). Said Iron rod being S. 89-40'E. 5016.9  
vrs. from a pile of stones in fence corner, the S.W. corner of  
the Agua Nueva de Abajo Grant,

Not being able to find any old marks on the ground along  
this line to determine the original N.W. corner of said Las C  
Comitas Grant, and 12000 vrs. being the called distance in  
the original field notes, I, ran S. 0-30'W. (as called in original  
field) at 1527.4 vrs. pass an iron rod from whence an Ebony  
mkd. X brs. S. 22-10'E. 51 vrs. (New marks), set for the S.E. corner  
of survey No. 275 and N.E. corner of survey 276, at 3403.9 vrs.  
an iron rod set for the N.E. corner of survey 195 and S.E. corner  
of survey 276, said iron rod being N. 89-11'W. 641 vrs from and  
old post (down) from whence a Mesq. mkd. MK brs. S. 6-10'E. 19  
vrs. another same marks brs. N. 27-00'W. 50 vrs. the original S.E  
corner of survey 276, set by Van Merrick, and conflicting with  
the Las Comitas Grant.

Thence returning to the iron rod set for the S.e. corner of  
survey 276, I ran N. 89-11'W. 1249.5 vrs. to and old Mesquite post  
mkd. L.R. for the S.W. corner of survey 276 in the East line of  
survey 210, Thence N. 0-49'E. at 137 vrs an old decayed post for  
the N.E. corner of survey 210 and the S.E. corner of survey 209,  
at 1876.4 vrs. an iron rod from whence a Mesq. mkd. X brs. S. 64-  
45'E. 16.6 vrs. (New Marks) for the N.W. corner of survey 276.

Thence S. 89-11'E. at 1238.9 vrs. the Iron rod set for the  
S.E. corner of survey 275 and N.E. corner of survey 276.

Thence from the iron rod set for the S.E. corner of survey  
276 and N.E. corner of survey 195, S. 0-30'W. at 1892.4 vrs an  
Stake rod set for the S.E. corner of survey 195 and N.E. corner  
of survey 196, at 2841.9 vrs. an iron rod set for the S.W. corner  
of the Las Comitas Grant and a corner of survey 196, at this  
point R.C. Trimble called for two bearing trees, not being able  
too find any trace of them, and not called for in the original  
survey of 196, and not found by any surveyor that I know of.

Thence with the South line of the Las Comitas Grant, N. 89-45'E.  
619.7 vrs to an iron rod set for the N.W. corner of survey 924  
and a corner of survey 196.

Thence S. 0-56'W. 953.0 vrs. to an iron rod from whence a Coma

a

12340

tree mkd. MK.brs.S.44-00'W.28.1 vrs.(Down)in the North line of survey 298, the S.W.corner of survey 224 and the S.E.corner of survey 196.

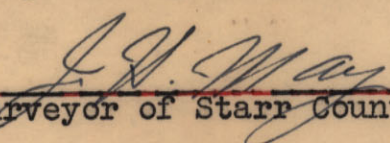
Thence N.89-11'W. at 1653.1 vrs.an iron rod for the N.W. corner of survey 298 at 1881.1 vrs.an old Mesq.post from whence a Mesq.mkd.MK.brs.S.12-15'W.9.2 vrs. the original S.W.corner of survey 196.

Thence N.0-46'E.1889.6 vrs.to an iron rod and old Mesq.Post, the S.W.corner of survey 195 and the N.W.corner of survey 196.

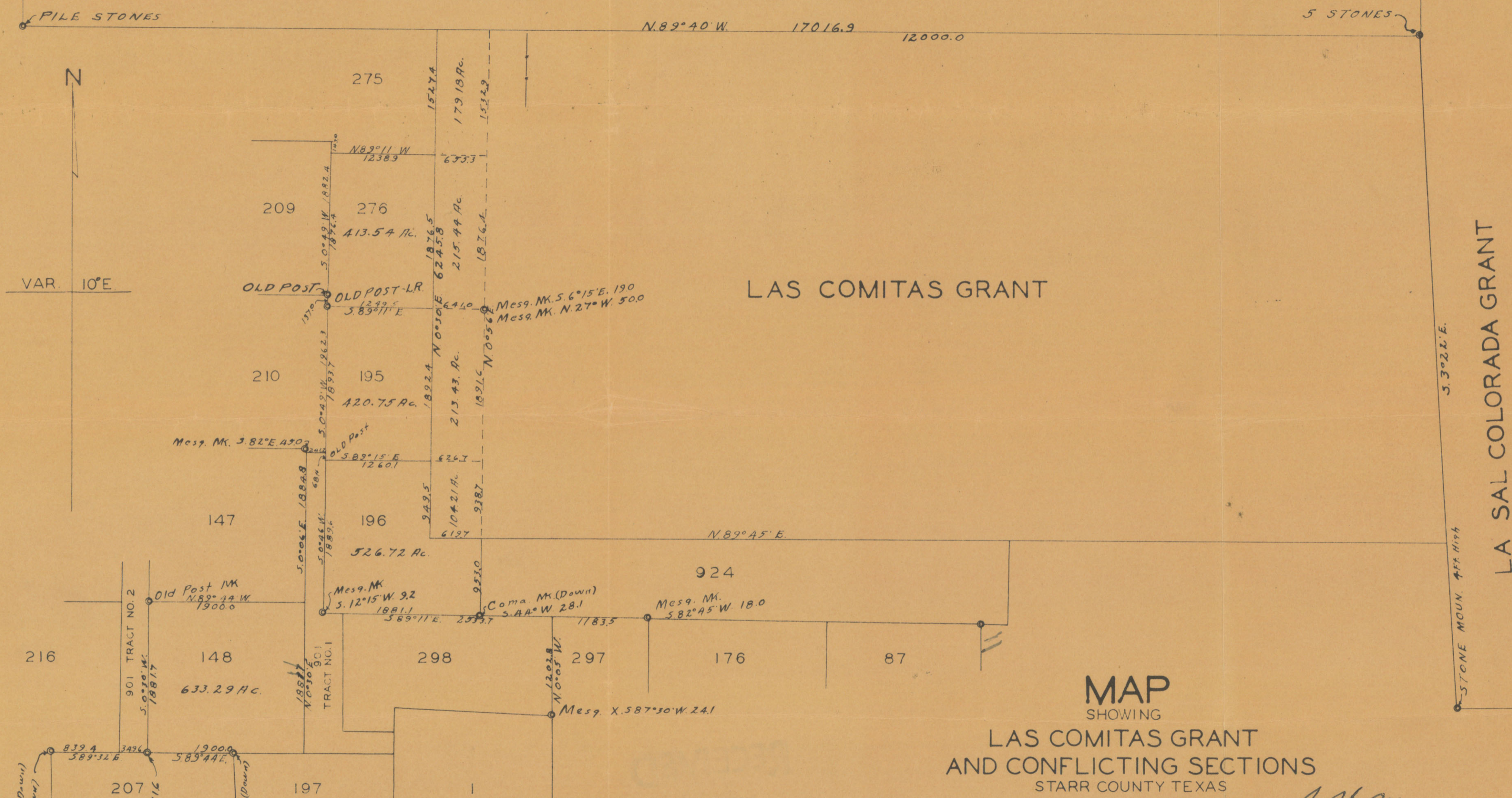
Thence N.89-15'W.1260.1 vrs.to the ~~instake~~ stake in the West line of the Las Comitas Grant, for the S.E.corner of survey 195 and N.E.corner of survey 196.

Accompanying this report is a map showing the Las Comitas Grant and Conflicting Sections.

Respectfully Submitted

  
Surveyor of Starr County, Texas.

AGUA NUEVA DE ABAJO GRANT



LAS COMITAS GRANT

LA SAL COLORADA GRANT

MAP  
SHOWING  
LAS COMITAS GRANT  
AND CONFLICTING SECTIONS  
STARR COUNTY TEXAS  
AUG. 4, 1941 SCALE 1" = 1000' VRS.

I, J. H. MAY SURVEYOR STARR COUNTY, TEXAS, DO HEREBY CERTIFY THAT THE FOREGOING MAP IS TRUE AND CORRECT AS FOUND BY AN ACTUAL SURVEY, MADE BY ME ON THE GROUND, AND ACCORDING TO LAW;  
AUGUST 4, 1941  
SURVEYOR OF STARR COUNTY, TEXAS.

J. H. May  
SURVEYOR OF STARR COUNTY, TEXAS.

82

1243

88275

SK.

File No. 41

Starr County

Rpt. SK. SUR. 276.

Filed Aug 21, 1941

BASCOM GILES, Com'r

Hedick

File Clerk

J. H. MAY  
COUNTY SURVEYOR AND ENGINEER  
STARR COUNTY  
RIO GRANDE CITY, TEXAS

J. H. MAY  
COUNTY SURVEYOR AND ENGINEER  
STARR COUNTY  
RIO GRANDE CITY, TEXAS

88276