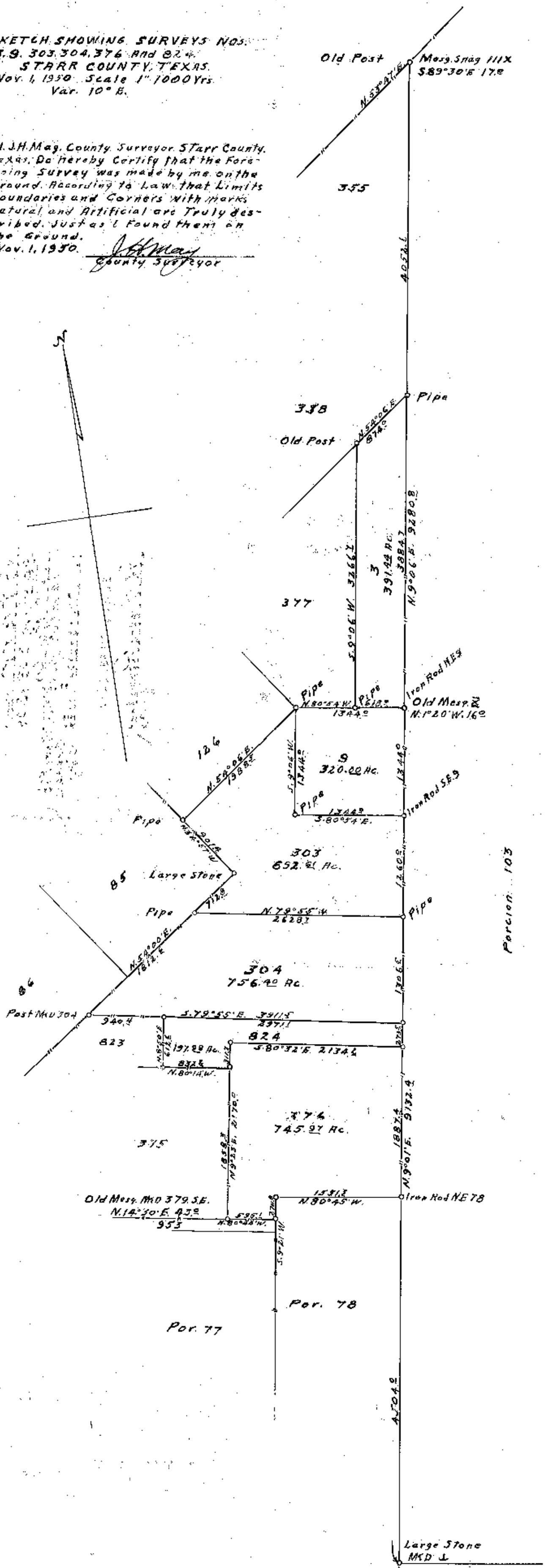


SKETCH SHOWING SURVEYS NOS.
 3, 9, 303, 304, 376 AND 824
 STARR COUNTY, TEXAS.
 Nov. 1, 1950. Scale 1" = 1000 Yrs.
 Var. 10° E.

I, J.H. May, County Surveyor, Starr County, Texas, Do hereby Certify that the Foregoing Survey was made by me on the Ground According to Law that Limits, Boundaries and Corners with Marks Natural and Artificial are Truly described, Just as I found them on the Ground.
 Nov. 1, 1950. *J.H. May*
 County Surveyor



RECEIVED

NOV 6 1950

RECEIVED BY MAIL