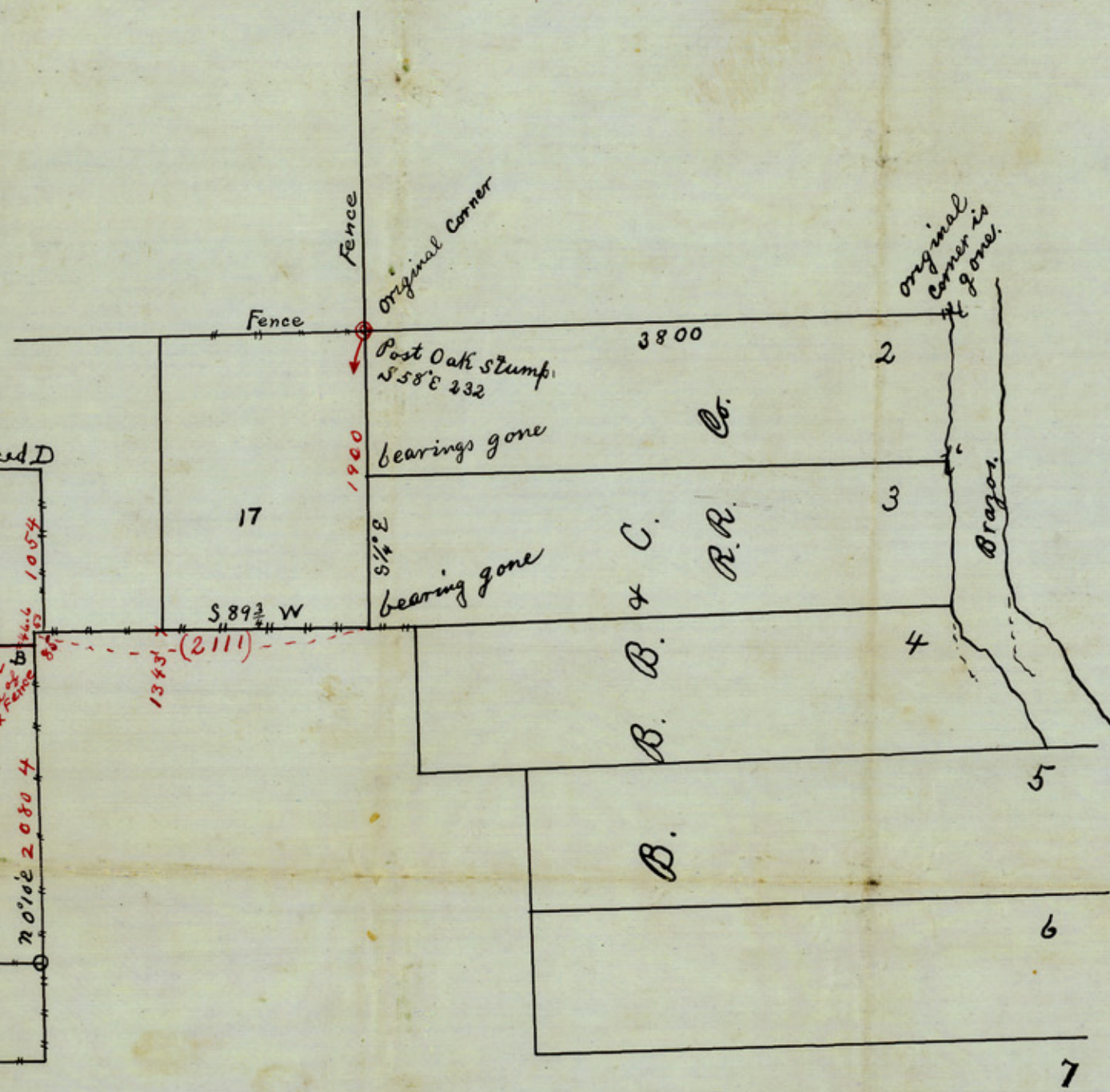
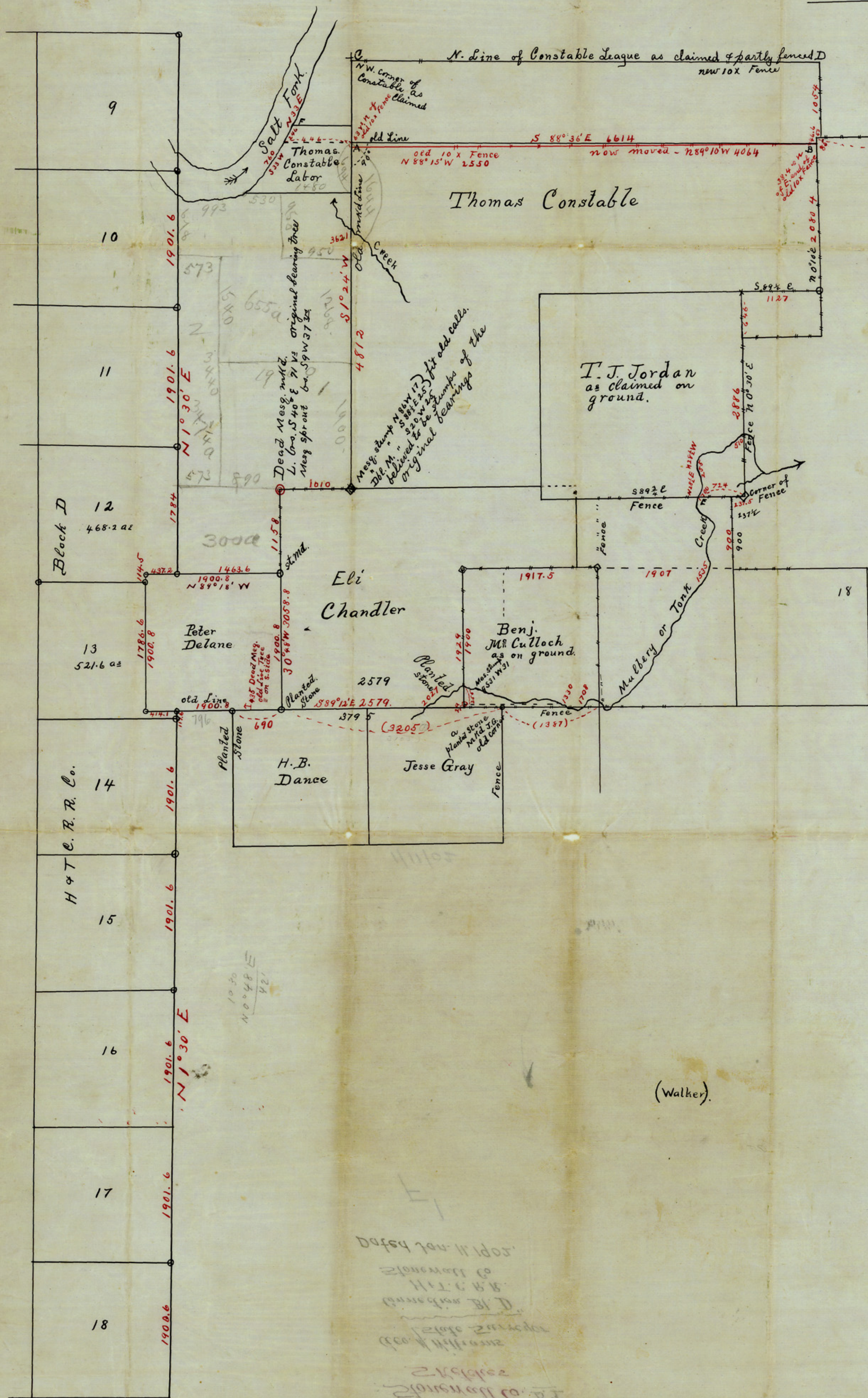


This sketch fails to show the Thos. Constable league survey as decreed by Court in Case of Pumphrey Vs. Funston et al. (see 1.1108). The sketch could however be used to show connection of Bl. D. H+T C. R. R. Co. with survey No. 2. B. B. B+C. R. R. Co. - See letter of Comm. Rogan to Co. Sur. of Stonewall Co. of date 1/21/02

Chas. D. Rogan  
Comm.



SKETCH of PART of STONEWALL CO.

- ⊙ In red ink indicates original corners, identified by bearings.
- ◊ Indicates corners recognized, but can't be fully identified as original.
- Corners made by Geo. M. Williams. Red ink figures indicate courses and distances actually taken on the ground.
- Indicates fence lines.
- Courses refer to true meridian.

I, Geo. M. Williams, State Surveyor, do hereby certify that this sketch truly and correctly represents resurveys as made by me, also connecting lines: and that all corners, courses and distances, with marks both natural and artificial, are truly represented thereon.

Given under my hand, this 11<sup>th</sup> day of January, AD. 1902.

Geo. M. Williams  
State Surveyor

Filed in Gene. Land Office  
Jan'y 15<sup>th</sup> 1902  
L. C. Wise  
See accompanying report of State  
Surveyor Geo. M. Williams.

(Walker).

See Original Roll Sketch.