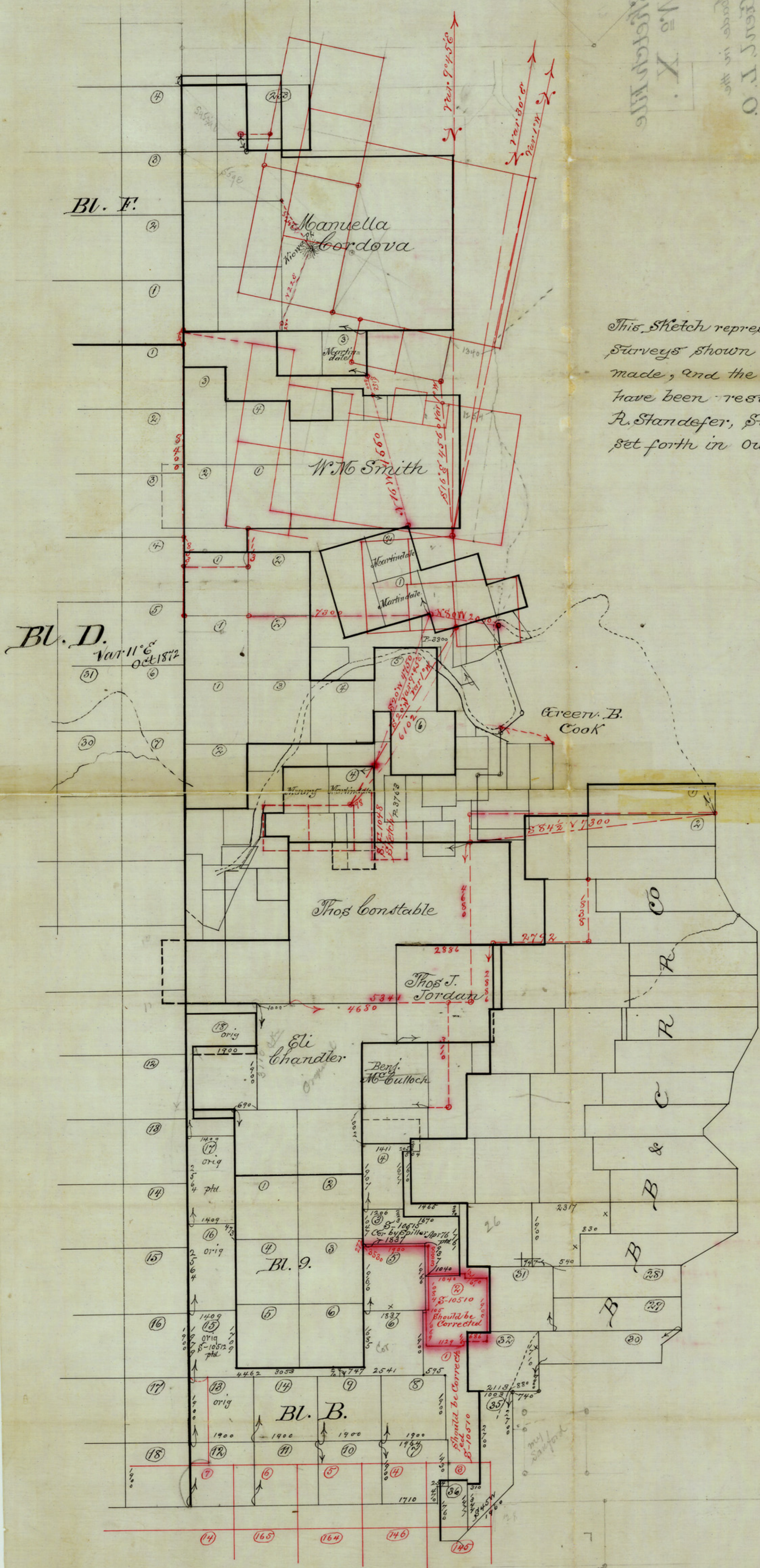


No. X.  
 Map of  
 Genl. I. O.  
 Stonewall Co.  
 showing the  
 original  
 surveys in the  
 year 1850  
 and the  
 resurveyed  
 lines in 1900



This Sketch represents in Black Lines, the various Surveys shown thereon, as they were originally made, and the Red Lines show them as they have been resurveyed in A.D. 1900 by W. R. Standefer, Surveyor of Stonewall Co., as set forth in our Sk File 12<sup>A</sup> and in S.F. 1048.

Feb' 27<sup>th</sup> 1901.  
 J. F. Pinckney, Compiler.