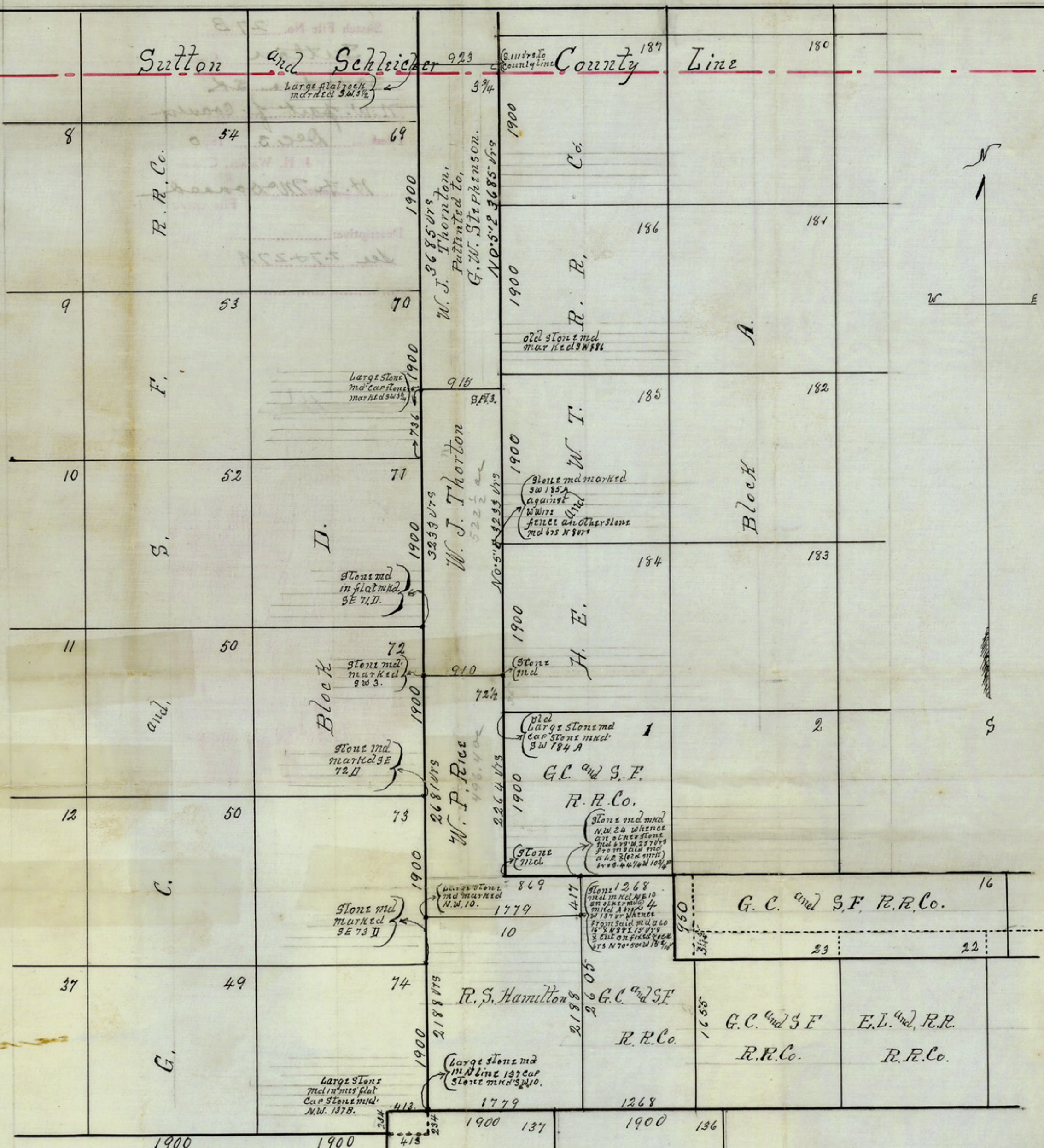


Sutton and Schleicher

County Line

Line

180



State of Texas
Sutton County

Edgar C Saunders

County Surveyor of Sutton County do hereby
 Certify that the above and foregoing sketch
 is a true and correct representation of the
 survey as made on the ground, and that all the
 limits boundaries and corners found and placed
 by me are truly described that the survey was made
 in the field and according to law. Edgar C. Saunders
 Surveyor of Sutton County Texas

Sketch in North Western Part Sutton Co.
 Scale 1000 yds to inch

75