

Sketch submitted by
E. G. SANDERS of SURVEY
19 to 24 INC. 1/2 OR 1/4 LINE
OF 24 IN. G. H. E. AND H. T.
S. A. G.
SEE LETTER OF SUBMITTER
DAN 24-1940.
FOR OFFICE USE ONLY.
Omn. 24-1940

Call - see 24-1940

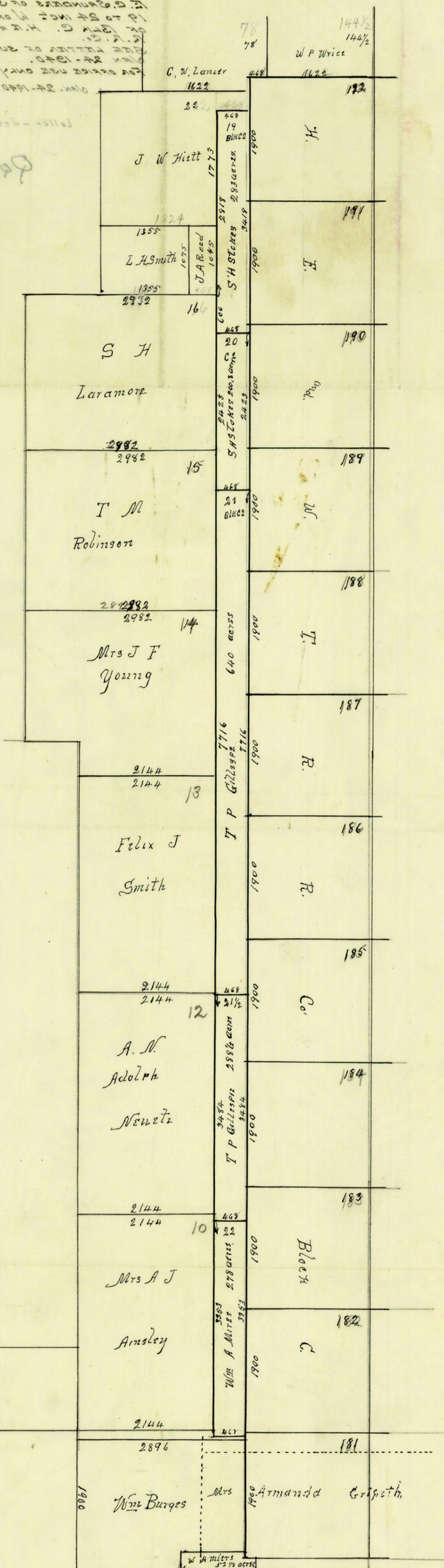
Dr

1 - info put into return letter
2 - info put into
3 - info put into
4 - info put into
5 - info put into
6 - info put into
7 - info put into
8 - info put into
9 - info put into
10 - info put into
11 - info put into
12 - info put into
13 - info put into
14 - info put into
15 - info put into
16 - info put into
17 - info put into
18 - info put into
19 - info put into
20 - info put into
21 - info put into
22 - info put into
23 - info put into
24 - info put into
25 - info put into
26 - info put into
27 - info put into
28 - info put into
29 - info put into
30 - info put into

310

Dr

COUNTY # 1531



RECEIVED

JAN 5 1940

REFERRED TO MAP

75