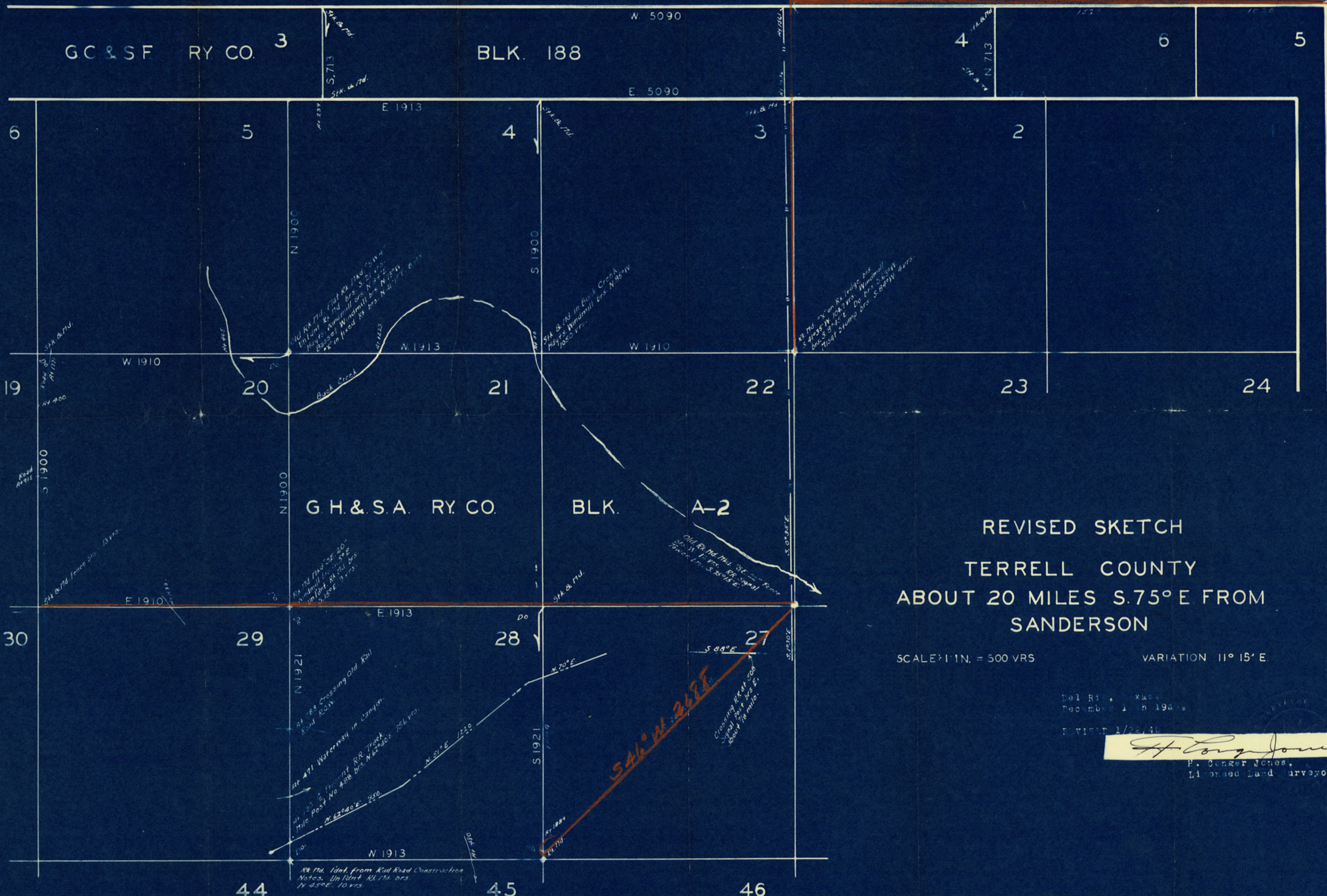


726.10 R. 17d
SE 5 SW 4
NE 1 SW 0
171.1
172.6 vrs.



REVISED SKETCH
 TERRELL COUNTY
 ABOUT 20 MILES S.75° E. FROM
 SANDERSON

SCALE 1" = 500 VRS VARIATION 11° 15' E.

Del. R. L. ...
 December 1, 19...
 Revised 1/22/40

H. Berger Jones
 H. Berger Jones,
 Licensed Land Surveyor.