

\$19⁰⁰ #388

1219

Anderson Texas, Dec. 11th 1924.

Com. Gen. Land Office,
Austin Texas,

Dear Sir:- I am enclosing herewith certified sketch with corrected field notes of survey No. 26 B&O Co. Cert. No. 53 as per your request of the 5th inst.

From the actual position of this survey with respect to its location from Myers Spring sur. 335 you will note that the Rio Grande lies further East and South than is shown by the map of Terrell Co. making almost enough room on the east for the entire survey and extending on the south a distance of 954000 below its South west corner. This also leaves a portion of sur. 27 which the map shows to be entirely on the Mexican side of the river.

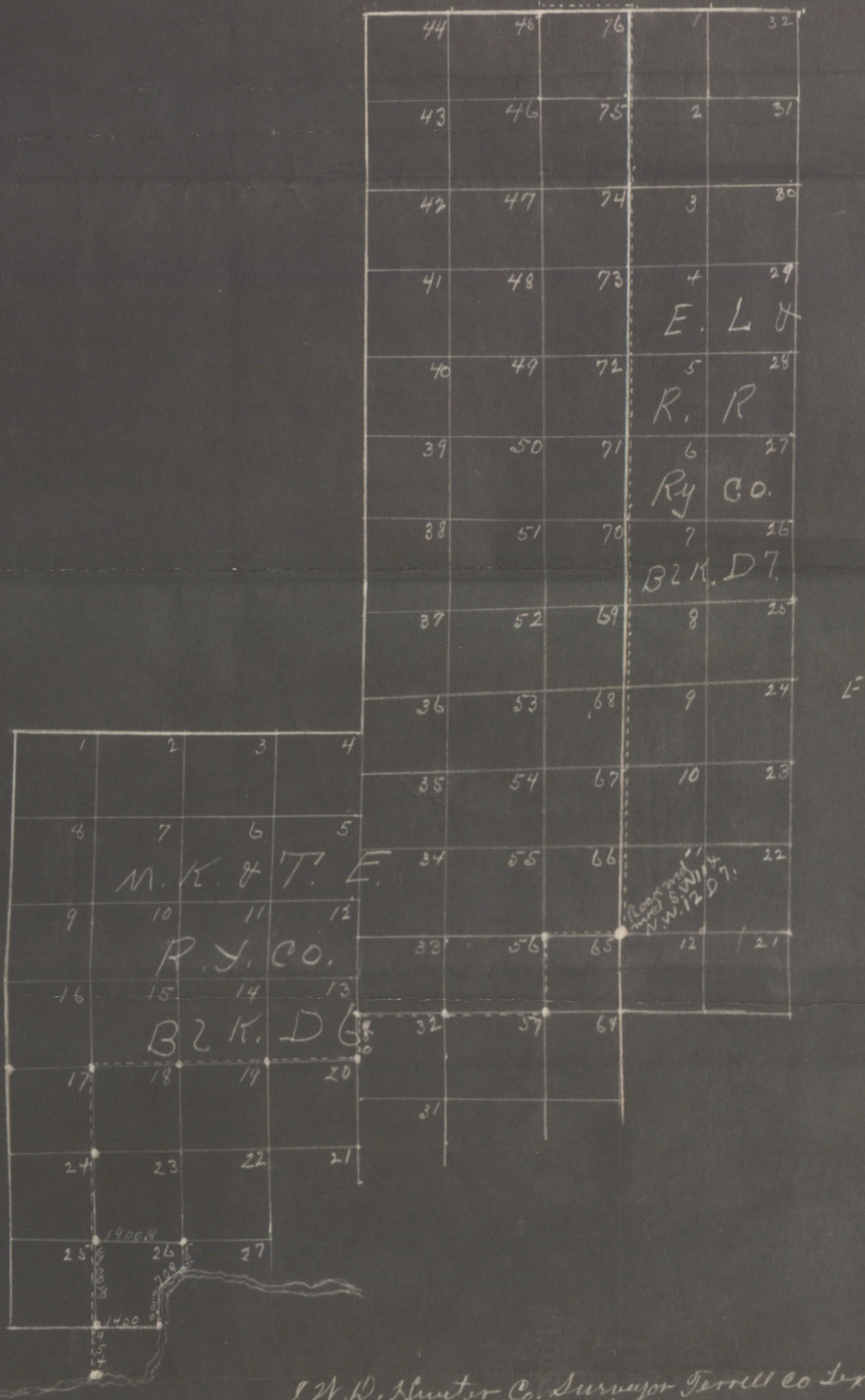
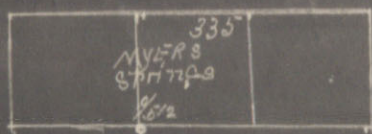
Trusting this will meet with your approval I remain,

Very truly Yours,
W. H. Hunter

Co. Surveyor, Terrell Co. Texas.

RECEIVED
DEC 12 1924
REFERRED TO MAP

variation 10° 43' East.



to D. D. line shown connection
with Myers Springs sur. No. 335.
• Corners made and marked
on ground.

I, W. D. Hunter Co. Surveyor Terrell Co. Tex.
do hereby certify that this sketch shows the
true and correct position of survey No. 26 B. K.
D. T. cert. No. 53 from actual survey made on the
ground by me Nov. 29, 1924, with reference to its
location from sec. 335, at 1/2 Myers Springs, to
where it touches the Rio Grande River on the
Texas side, and that the area as shown by
meter and bounds is actually contained therein.

W. D. Hunter
Co. Surveyor Terrell Co. Texas.

File 34661
Baylor Camp
Sketch and
Statement
Filed Dec. 12, 1924
J. M. Robinson, Com.
Clark

File No. 33

TERRELL County
SKETCH FILE

Filed Aug 13 1953

BASCOM GILES, COM'R

By V.E.S.

Photostatic copy
of connecting
line filed in
Bx S-34661 -
M.K. & T.E. Ry. Bk. D-6,
& E.L. & R.R. Ry.
Bk. D-7 to
Myers Springs
By W.D. Hunter
Dec. 1924

GENERAL LAND OFFICE, AUSTIN, TEXAS 8-13-1953

I, Dennis Wallace, Chief Clerk Acting Commissioner of the
General Land Office of the State of Texas, do hereby certify that on
the reverse side hereof is a true and correct copy of the original of this
instrument now on file in this office together with all endorsements
thereof.

IN TESTIMONY WHEREOF, I herunto set my hand and affix
the seal of said office the day and date first above written.

Dennis Wallace, Chief Clerk Acting
Commissioner of the General Land Office.