

Hockley Co.

Lubbock Co.

Lynn Co.

Terry Co.

Sketch from Lubbock, Hockley,
Lynn and Terry Counties
with connecting line of Block C.B.
showing relative position to Blk Co.
Scale 2000 Varas = 1 inch

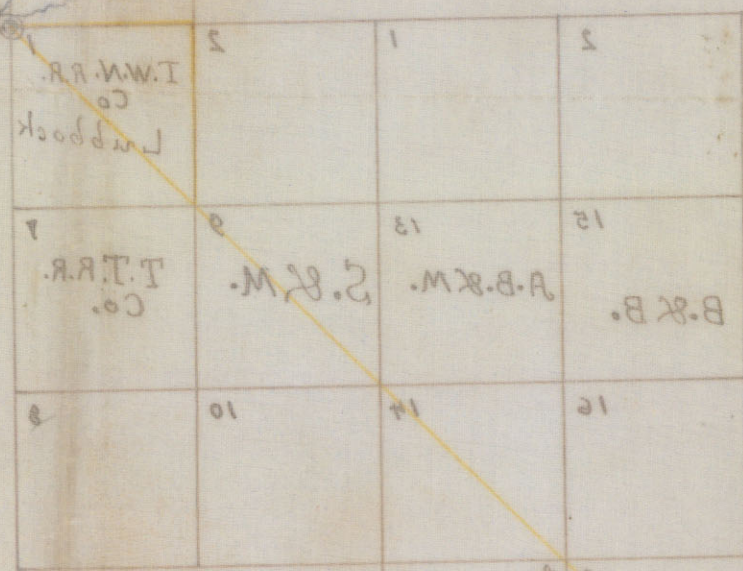
by T.H. Seay

TERRY COUNTY
No. 1

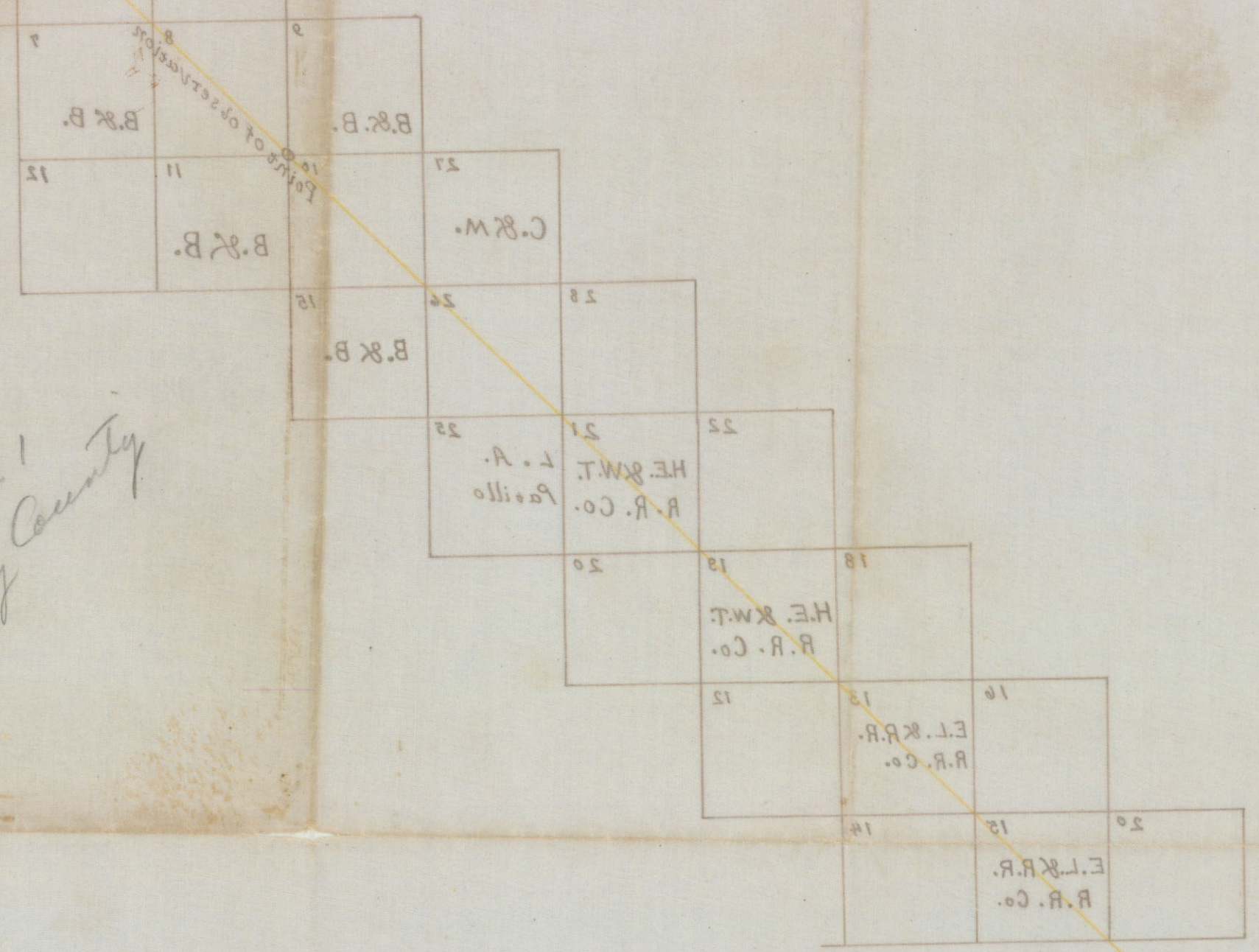
Filed May 2nd 1904.
Plat no. 1 Terry Co.

J.I.R.M.

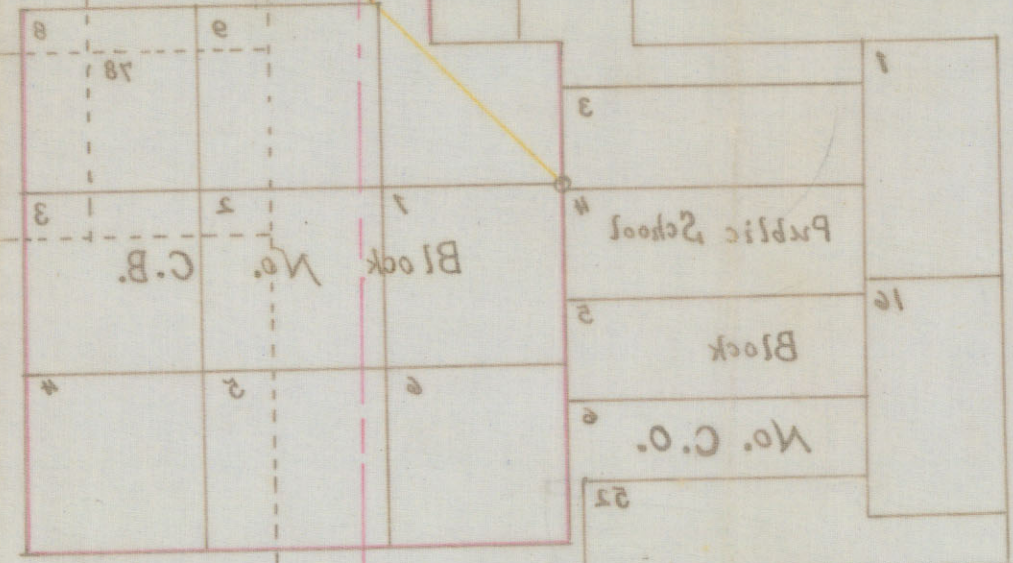
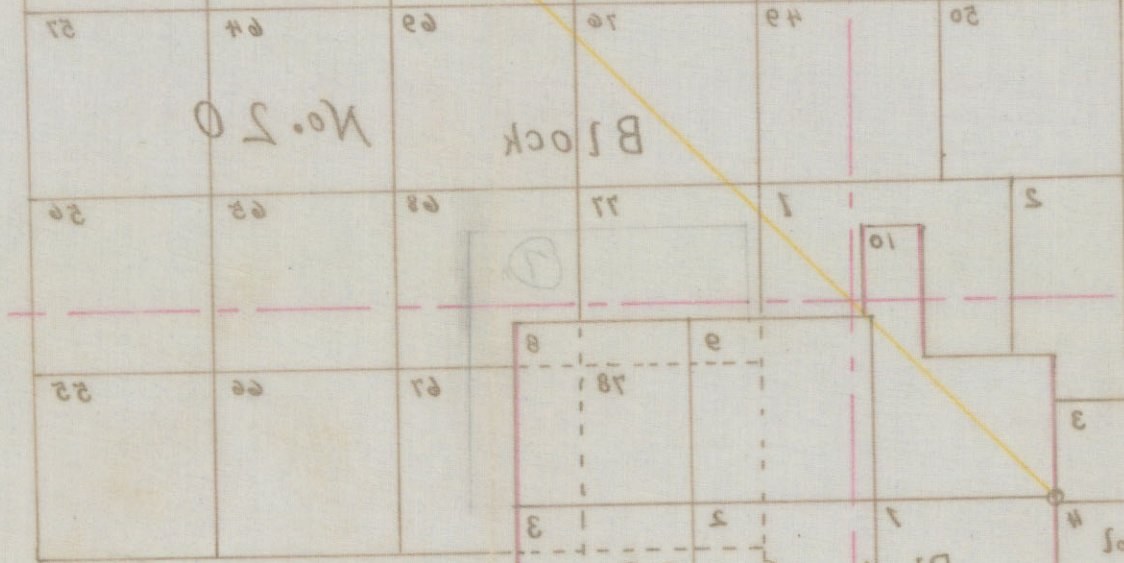
Yellow Pine Creek



Sketch of Terry County



Hockley Co. H.E.R. W.T. R.R. Co. Block No. 20



Lynn Co.

Terry Co.

Sketch from Lubbock. Hockley.
 Lynn and Terry Counties
 with county line of Block C.B.
 showing relation position to B.R. Co.
 Scale 2000 ft. = 1 inch
 by T.H. Gray

Plot No. 1 Terry Co.
 Block No. 20
 1877

N^o 1.

Terry County Sketch File
Block CB N.E. Corner.

Filed May 2 1904
John J. Terrell, Com.
by Hummell

(See sketch no 2
on shelf.)

Terry Co.