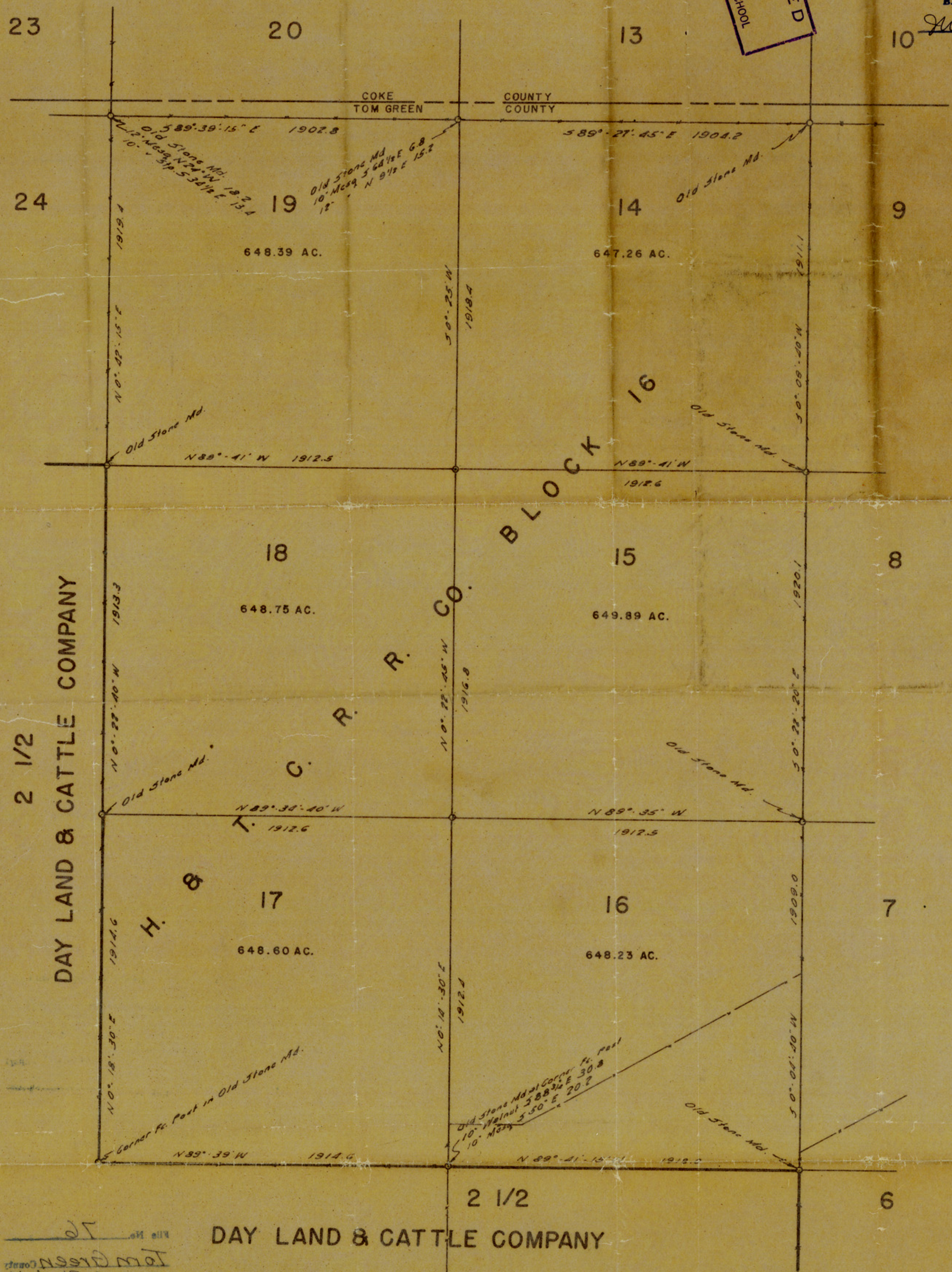


RECEIVED  
JUN 13 1951  
REFERRED TO TO SCHOOL

SK. FILE No. 76  
Tom Green County  
Part of H & T. C. Ry. Co.  
Block 16  
Filed June 15, 1951  
BASCUM GILES, Com'r  
W. D. Rawls  
File Clerk



MAP SHOWING A RE-SURVEY OF  
A PART OF TOM GREEN COUNTY

MADE FOR

JAKE Z. HARPER

SURVEYED BY ME ON THE GROUND IN MAY, 1951.

M. D. Rawls  
M. D. RAWLS - LICENSED STATE LAND SURVEYOR.

File No. 76  
Tom Green County  
Part of H & T. C. Ry. Co.  
Block 16  
Filed June 12, 1951  
BASCUM GILES, Com'r  
W. D. Rawls  
File Clerk

DAY LAND & CATTLE COMPANY