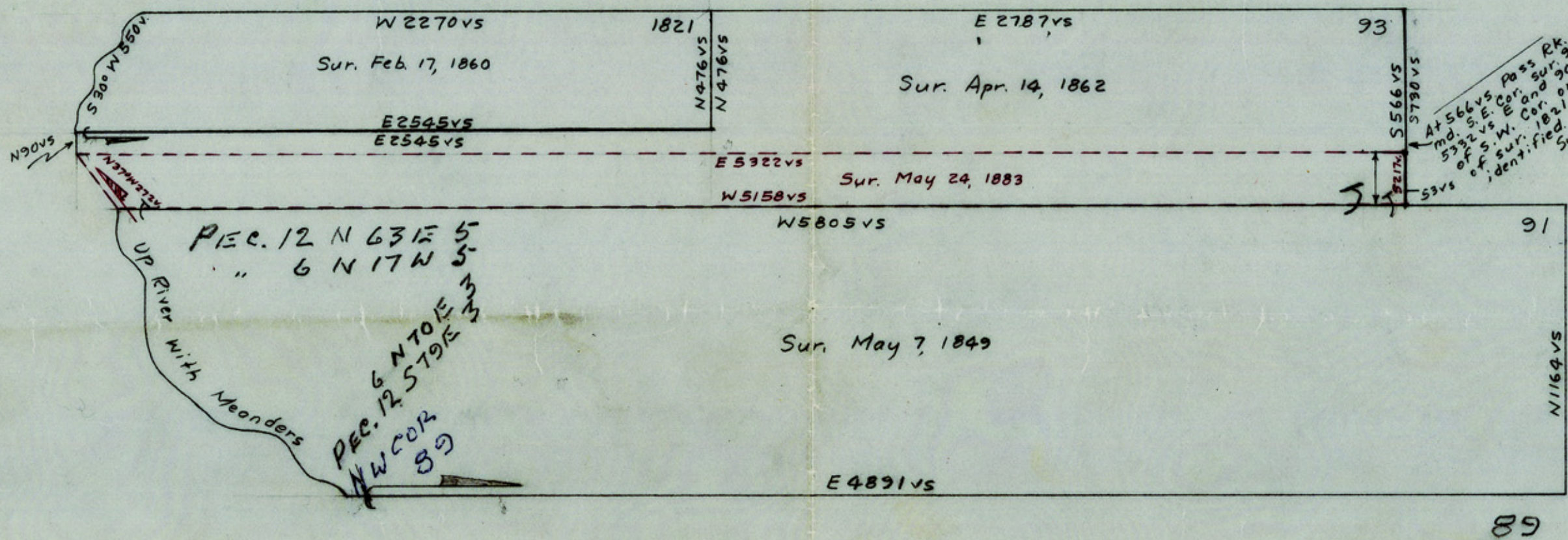
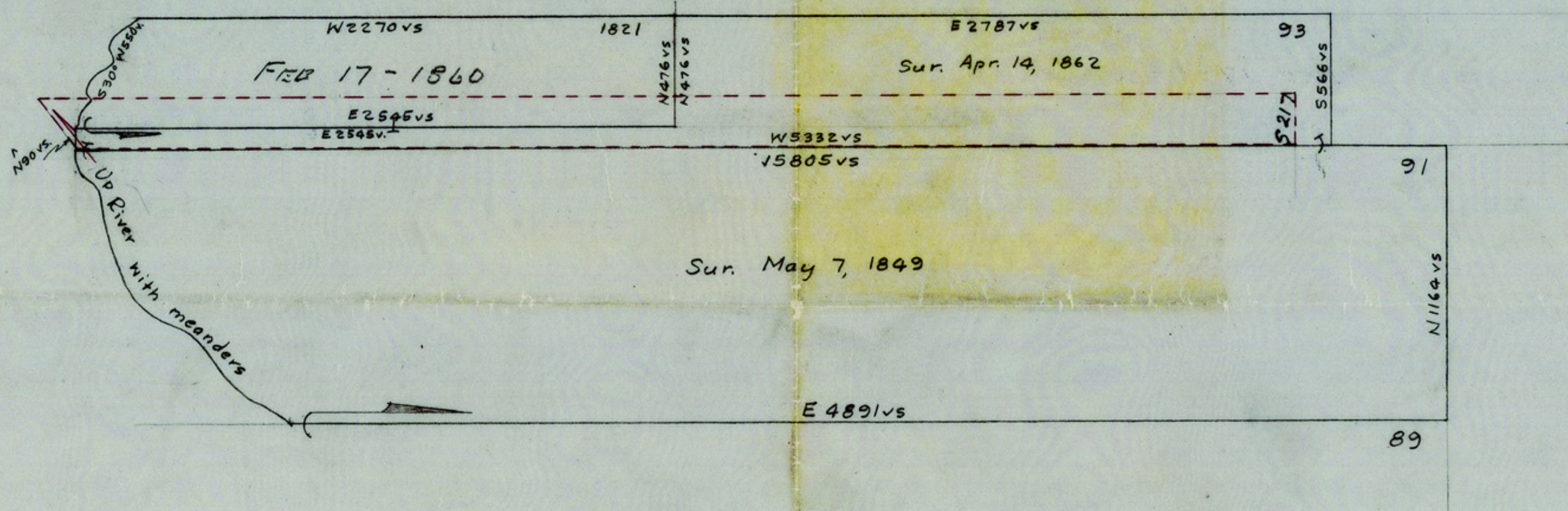


15. Brockhoff
 2-85-51
 Sketch File 79B
 Tom Green Co.



SEC. 12 N 6315 5
 " 6 N 17W 5
 SEC. 6 N 10E 13
 SEC. 12 S 10E 13
 WWCOR 89

At 566 vs Pass Rk.
 md. S. E. Cor. of sur. 90 vs S.
 572 vs E. Cor. and 90 vs S.
 of W. Cor. of River
 of sur. 1821 found and
 identified Sur. May, 1883
 By Thompson Mc Donald

OFFICE SKETCH IN
 TOM GREEN COUNTY
 General Land Office Austin, Tex
 Bill Allcorn Commissioner
 Scale 1" = 500 vs
 12-18-59

M.A. 54015

Tom Green Co.
 12-18-59 R.B.

COMPLET# 15421