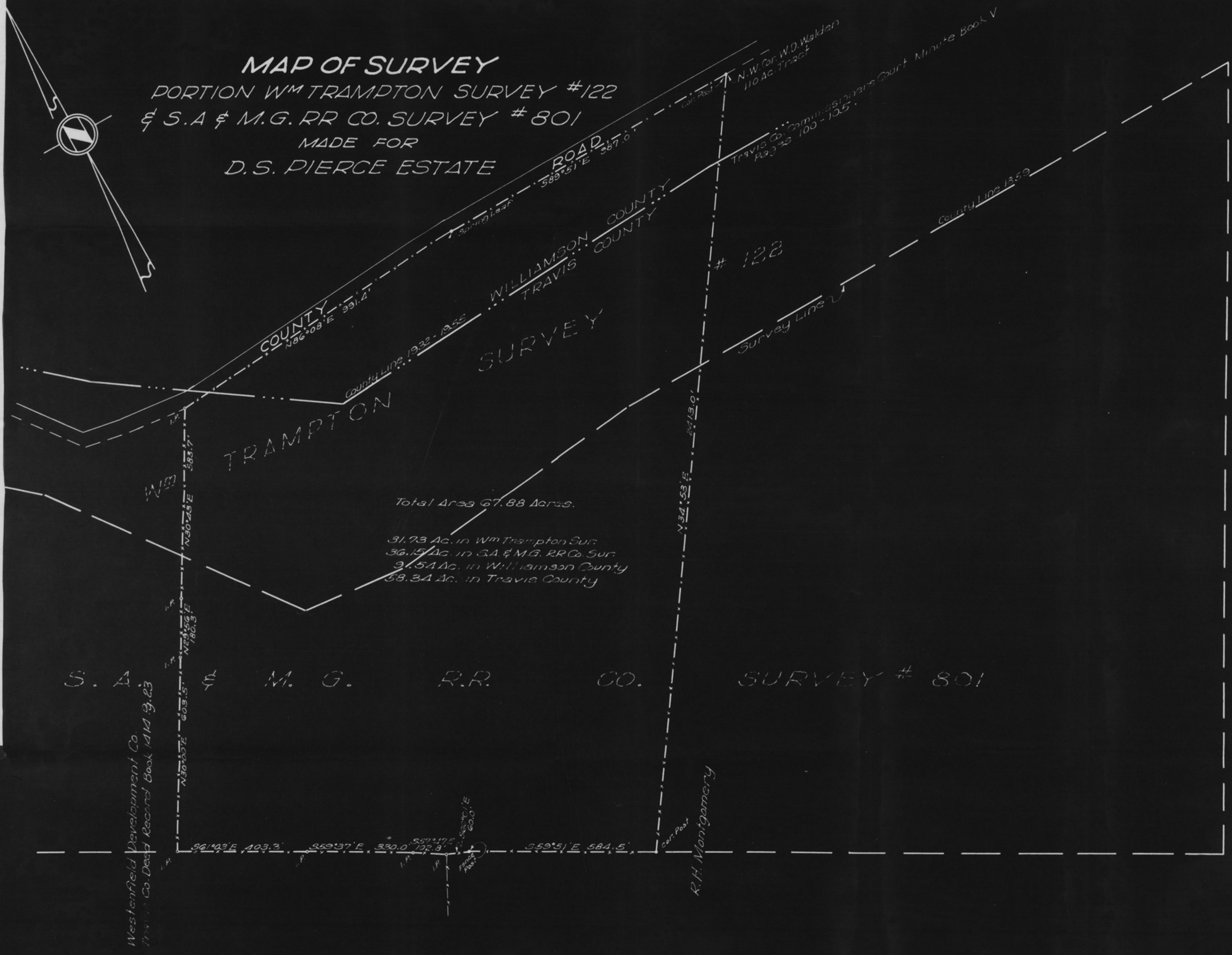


MAP OF SURVEY
 PORTION WM TRAMPTON SURVEY #122
 & S.A & M.G. RR CO. SURVEY # 801
 MADE FOR
 D.S. PIERCE ESTATE



Total Area 67.88 Acres.
 31.73 Ac. in Wm Trampton Sur.
 36.15 Ac. in S.A. & M.G. RR Co. Sur.
 9.54 Ac. in Williamson County
 58.34 Ac. in Travis County

Scale 1" = 200 Feet