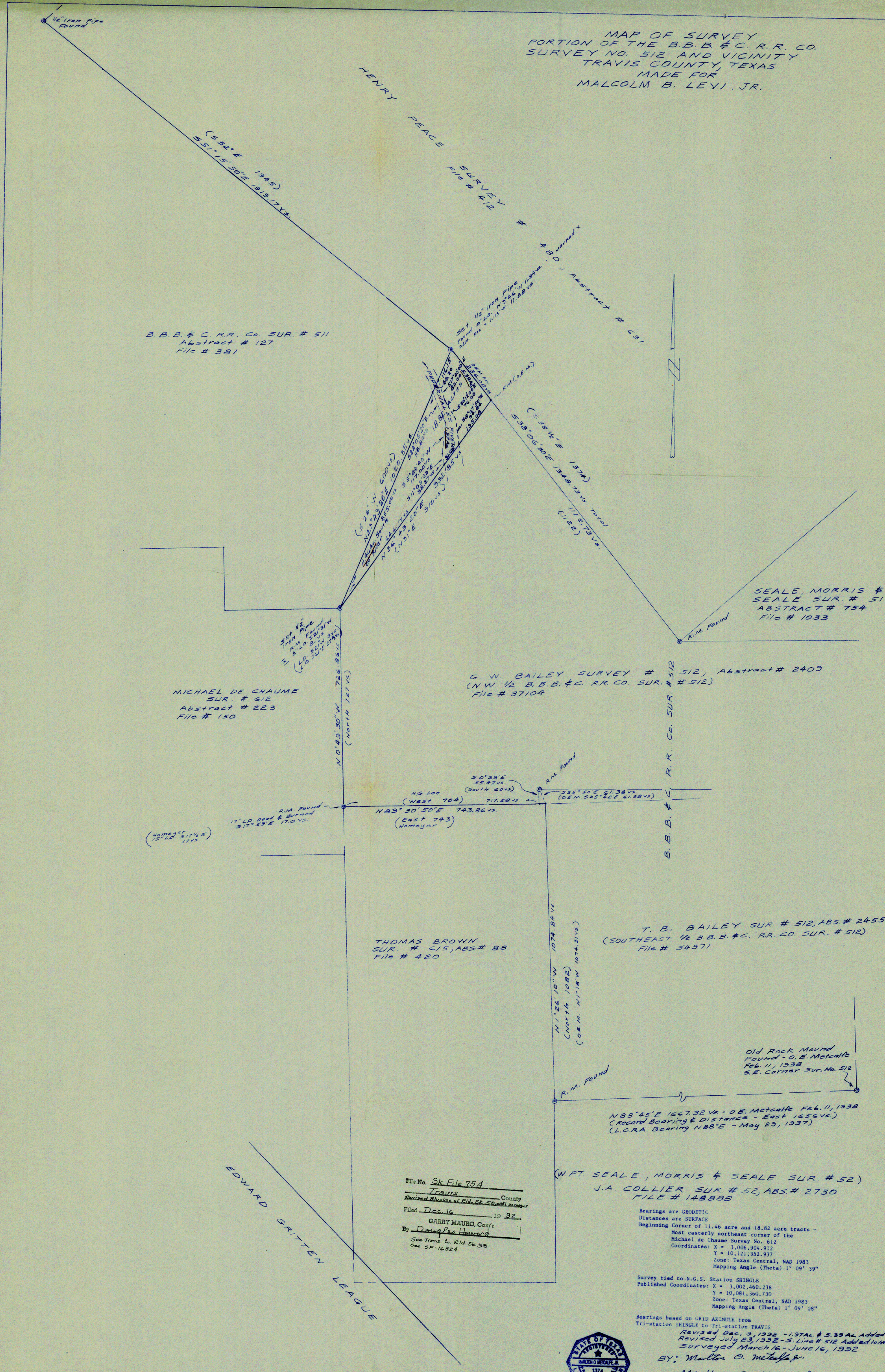


MAP OF SURVEY  
 PORTION OF THE B.B.B. & C. R.R. CO.  
 SURVEY NO. 512 AND VICINITY  
 TRAVIS COUNTY, TEXAS  
 MADE FOR  
 MALCOLM B. LEVI, JR.



B.B.B. & C. R.R. Co. SUR. # 511  
 Abstract # 127  
 File # 381

MICHAEL DE CHAUME  
 SUR. # 612  
 Abstract # 223  
 File # 150

G. W. BAILEY SURVEY # 512, Abstract # 2409  
 (NW 1/2 B.B.B. & C. R.R. CO. SUR. # 512)  
 File # 37104

THOMAS BROWN  
 SUR. # 615, ABS. # 88  
 File # 420

T. B. BAILEY SUR. # 512, ABS. # 2455  
 (SOUTHEAST 1/4 B.B.B. & C. R.R. CO. SUR. # 512)  
 File # 54971

N88°45'E 1667.32 vs. - O.E. Metcalfe Feb. 11, 1938  
 (Record Bearing & Distance - East 1656 vs.)  
 (L.C.R.A. Bearing N88°E - May 23, 1937)

(WPT SEALE, MORRIS & SEALE SUR. # 52)  
 J.A. COLLIER SUR. # 52, ABS. # 2730  
 FILE # 148885

File No. Sk File 75A  
Travis County  
 Revised Abstract of Rld. Sk. 52, addl. excepts  
 Filed Dec. 16 1932  
 By GARRY MAURO, Com'r  
See Travis Co. Rld. Sk. 58  
 See 3F-16224

Bearings are GEODETIC  
 Distances are SURFACE  
 Beginning Corner of 11.46 acre and 18.82 acre tracts -  
 Most easterly northeast corner of the  
 Michael de Chaume Survey No. 612  
 Coordinates: X = 3,006,904.912  
 Y = 10,121,352.937  
 Zone: Texas Central, NAD 1983  
 Mapping Angle (Theta) 1° 09' 39"

Survey tied to N.G.S. Station SHINGLE  
 Published Coordinates: X = 3,002,480.238  
 Y = 10,081,960.730  
 Zone: Texas Central, NAD 1983  
 Mapping Angle (Theta) 1° 09' 08"



Marlon O. Metcalfe, Jr.  
 County Surveyor of Travis  
 County, Texas Registered  
 Professional Surveyor No. 1374

Sketch File No. 75A  
 County Travis