



1385
1640
2367
1568
1960

977
511
426

1344
1774
426
284
1264
1039
1064
5467
2308
1579

2644
1660
5844

389

N.E. Westall

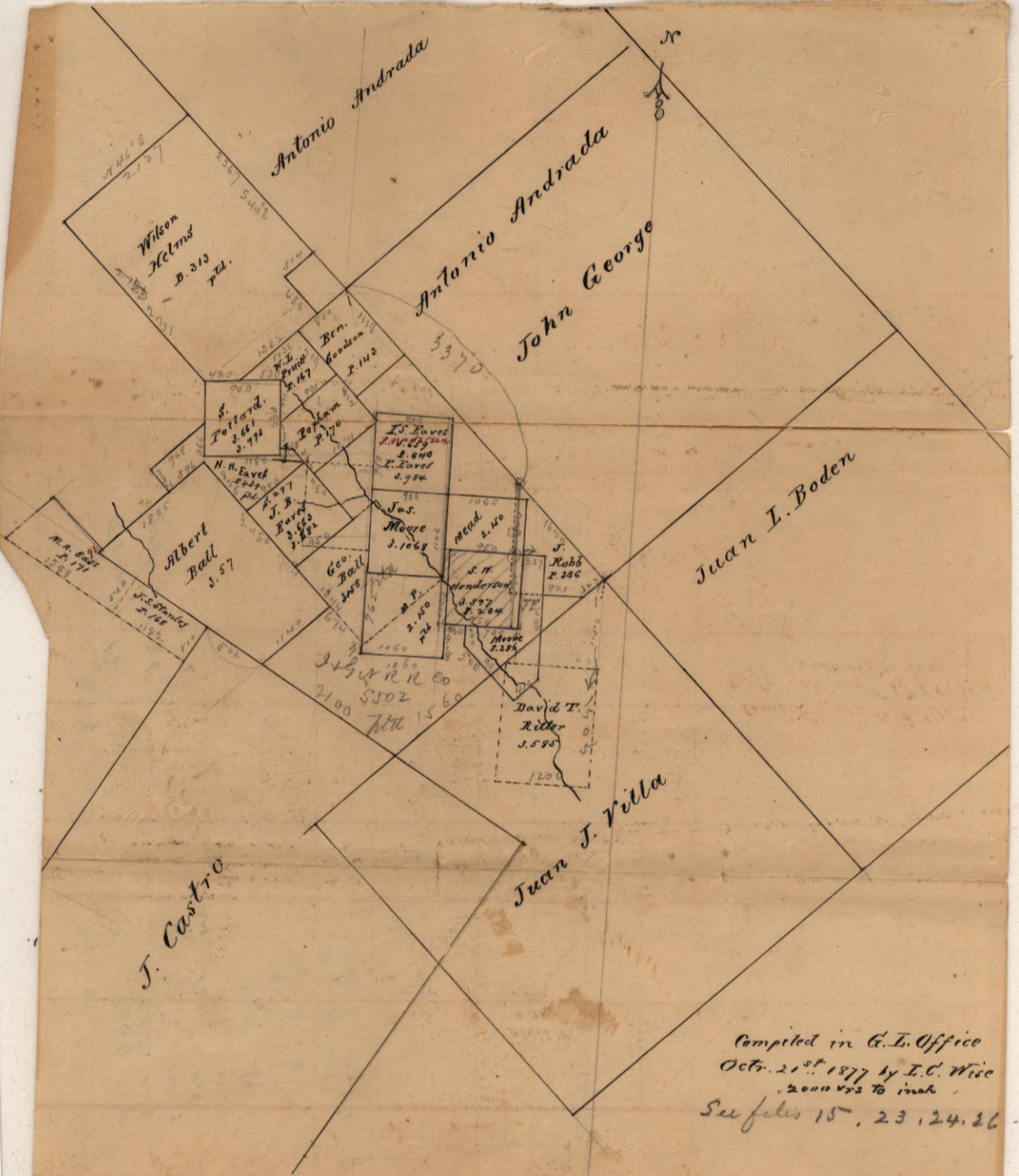
896
295
601

Map of part of
Trinity County
Showing 1861 Surveys

66

I George Gibson County Surveyor
of Trinity County do hereby certify
that the foregoing plat and dis-
tances marked thereon is correct
as ascertained by lines run and actual
surveys made upon the ground by
me.

Geo. Gibson
Surveyor Trinity Co.
Texas
Filed March 1st 77.
Commissioner



Completed in C.I. Office
 Oct. 21st 1877 by I.C. Wise
 2000 ft to inch
 See files 15, 23, 24, 26

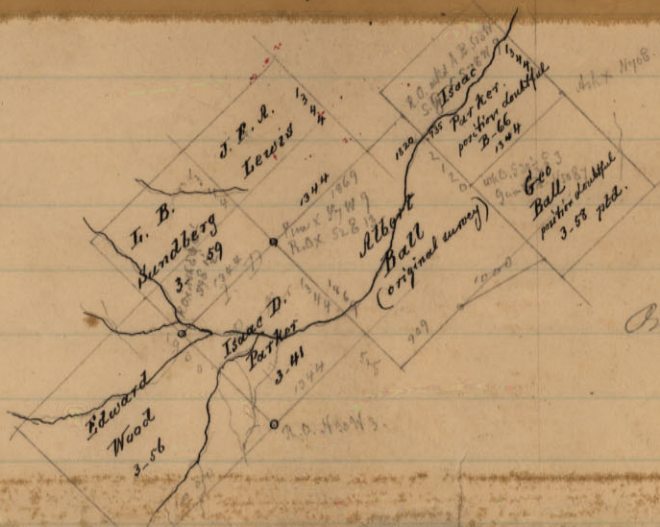
2500
2) 500
2500
247

Trinity Co.
File No 25

Begin at E Cor. Albert Ball

Shun	S45E	654
"	South	110
"	East	1060 v
"	West	418 v
"	East	220 v
"	South	240 v
"	S45E	500
"	S45W	1600
"	N60W	2050
"	N45E	1149 v

Wilson Helms
D-314



Original surveys

Trinity
File 26.

McLaron D-3M

R-31

W. L. B. ...
E. ...
G. ...

88333

TRINITY CO.
SCHOOL LAND

ANTONIO ANDRADA

380 E 35 71

1843
18GN
No 16

18GN RR
No 17

18GN RR
No 18

18GN
No 20

18GN
No 21

JOHN V. GEORGE

A.F. WESTILL

WILSON
HELMS

WILSON
HELMS

B
COADSON

J COY

HT & BRR

STATE

JOHN YEACON

J. GASTRO

JUAN VILLA

5000
S 20 W

260 N

1344
440
35 S 30 W

3571
1752

944
149

2078
N 60 W

2335
1720 S

1779

546 W
30 7/8

1685 N 1/2 W 28

576 N 1/2 W 28

596 N 1/2 W 28

596 N 1/2 W 28

596 N 1/2 W 28

596 N 1/2 W 28

596 N 1/2 W 28

596 N 1/2 W 28

596 N 1/2 W 28

596 N 1/2 W 28

2335

1720 S

1720 S

1720 S

1720 S

1720 S

1720 S

1720 S

1720 S

1720 S

1720 S

1720 S

1720 S

1720 S

1720 S

1720 S

1720 S

1720 S

1720 S

1720 S

1720 S

1720 S

1720 S

1720 S

1720 S

1720 S

1720 S

1720 S

1720 S

1720 S

1720 S

1720 S

1720 S

1720 S

1720 S

1720 S

1720 S

1720 S

1720 S

1720 S

1720 S

1720 S

1720 S

1720 S

1720 S

1720 S

1720 S

1720 S

1720 S

1720 S

1720 S

1720 S

1720 S

1720 S

1720 S

1720 S

1720 S

1720 S

1720 S

1720 S

1720 S

1720 S

1720 S

1720 S

1720 S

1720 S

1720 S

1720 S

1720 S

1720 S

1720 S

1720 S

1720 S

1720 S

1720 S

1720 S

1720 S

1720 S

1720 S

1720 S

1720 S

1720 S

1720 S

1720 S

1720 S

1720 S

1720 S

1720 S

1720 S

1720 S

1720 S

1720 S

1720 S

1720 S

1720 S

1720 S

1720 S

1720 S

1720 S

1720 S

1720 S

1720 S

1720 S

1720 S

1720 S

1720 S

1720 S

1720 S

1720 S

1720 S

1720 S

1720 S

1720 S

1720 S

1720 S

1720 S

1720 S

1720 S

1720 S

1720 S

1720 S

1720 S

1720 S

1720 S

1720 S

1720 S

1720 S

1720 S

1720 S

1720 S

1720 S

1720 S

1720 S

1720 S

1720 S

1720 S

1720 S

1720 S

1720 S

1720 S

1720 S

1720 S

1720 S

1720 S

1720 S

1720 S

1720 S

1720 S

1720 S

1720 S

1720 S

1720 S

1720 S

1720 S

1720 S

1720 S

1720 S

1720 S

1720 S

1720 S

1720 S

1720 S

1720 S

1720 S

1720 S

1720 S

1720 S

1720 S

1720 S

1720 S

1720 S

1720 S

1720 S

1720 S

1720 S

1720 S

1720 S

1720 S

1720 S

1720 S

1720 S

1720 S

1720 S

1720 S

1720 S

1720 S

1720 S

1720 S

1720 S

1720 S

1720 S

1720 S

1720 S

1720 S

1720 S

1720 S

1720 S

1720 S

1720 S

1720 S

1720 S

1720 S

1720 S

1720 S

1720 S

1720 S

1720 S

1720 S

1720 S

1720 S

1720 S

1720 S

1720 S

1720 S

1720 S

1720 S

1720 S

1720 S

1720 S

1720 S

1720 S

1720 S

1720 S

1720 S

1720 S

1720 S

1720 S

1720 S

1720 S

1720 S

1720 S

1720 S

1720 S

1720 S

1720 S

1720 S

1720 S

1720 S

1720 S

1720 S

1720 S

1720 S

1720 S

1720 S

1720 S

1720 S

1720 S

1720 S

1720 S

1720 S

1720 S

1720 S

1720 S

1720 S

1720 S

1720 S

1720 S

1720 S

1720 S

1720 S

1720 S

1720 S

1720 S

1720 S

1720 S

1720 S

1720 S

1720 S

1720 S

1720 S

1720 S

1720 S

1720 S

1720 S

1720 S

25

Trinity Co

Sundry sketches, all numbered

25.