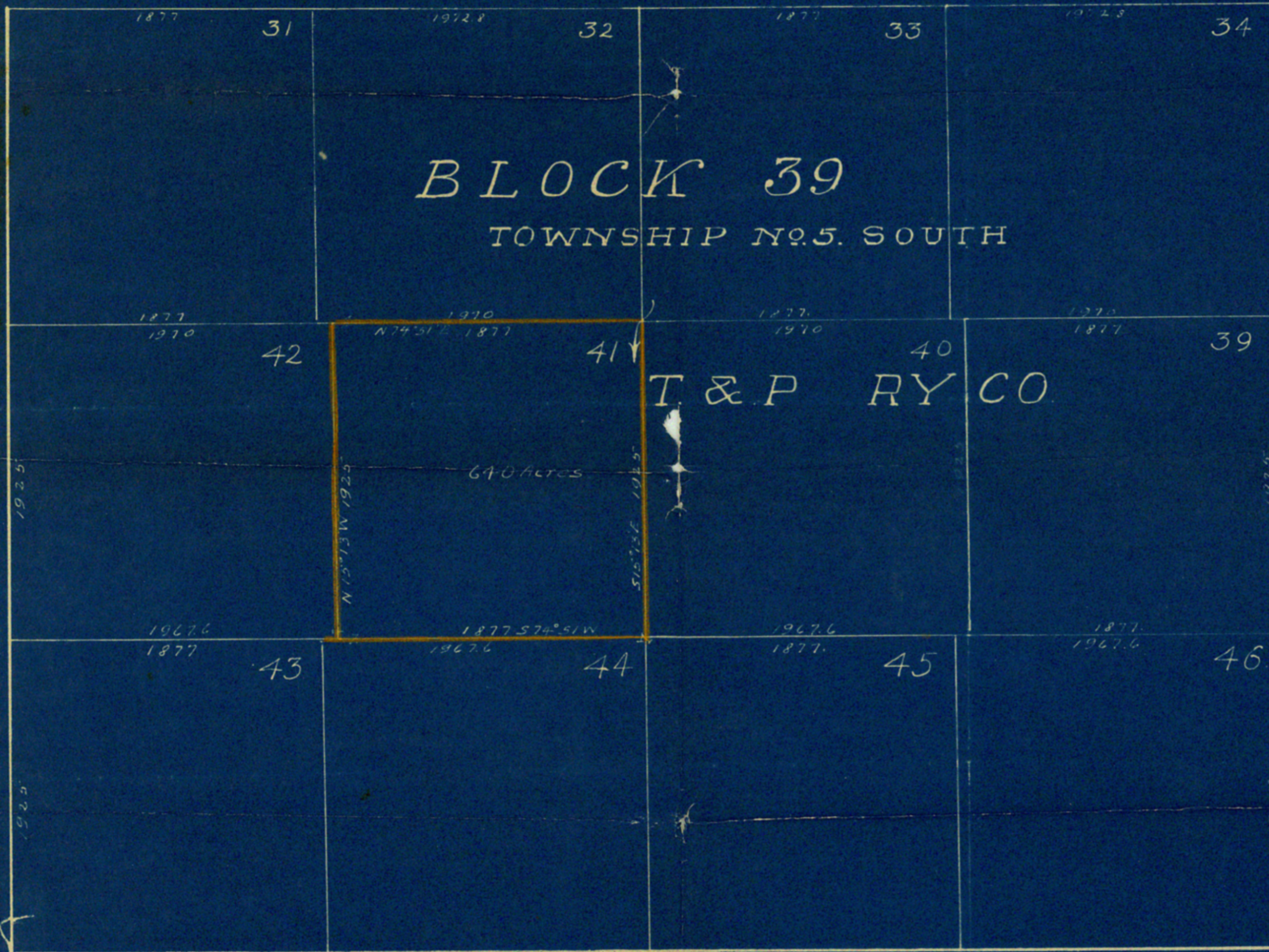


# UPTON COUNTY SKETCH

600-YARDS = 1 INCH



I, Robt E. Estes, Licensed Land Surveyor, Midland County, Texas, do hereby certify, that the hereon sketch is true & correct, and that the lines, and corners are truly described and correctly set forth.

This 15<sup>th</sup> day of November 1927

Robt E. Estes  
Licensed Land Surveyor  
Midland Co  
Texas