

August 17, 1964

Mr. Roscoe M. Simpson  
410 South Tyler  
San Angelo, Texas

Dear Mr. Simpson:

In connection with your surveying problem in Block C, C.C.S.D. & R.G.N.G. R.R. Co., Upton County, Texas, we have examined the sketches and field notes of Surveyors Estes, Cool, Goodfellow, Avera and Simpson related to the area. There seems to be a number of discrepancies between these later surveyors and the original surveys of Randolph and Cunningham, apparently caused to a great extent by a misunderstanding as to the proper location and dignity of the Northwest corner of Section 20, G.C. & S.F. Ry. Co., Block Y.

Section 42 in Block C is patented on the J. A. Simpson corrected field notes and a deed of acquittance was issued on Simpson's corrected field notes for Section 33.

Sections 46, 48 and 50 are patented on the corrected field notes of Goodfellow. Section 15 in Block Y was corrected with a deed of acquittance on the corrected field notes of C. C. Cool, who tied to the Goodfellow corner.

The remaining surveys adjoining Sections 36, 38, 40 and 44 in Block C are patented on the original field notes by Randolph and Cunningham. Now if the construction of Block C as reflected by the sketches of Avera and Simpson is applied in surveying these sections, there will undoubtedly be some conflicts with previously patented surveys, so consequently the patents must be respected.

It is suggested that you submit a sketch and tentative field notes covering the subject surveys and the Legal Department of this office will then be better able to advise you.

Mr. Simpson

-2-

August 17, 1964

A copy of a part of the Avera map together with a rough office sketch is enclosed with this letter.

Sincerely yours,

JERRY SADLER, Commissioner

JS/vss

Encl.

SCHUMANN ENGINEERING COMPANY ✓

Box 504 • AREA CODE 915 MU 4-7802

✓ MIDLAND, TEXAS 79701

November 3, 1964

Credit \$ 4750  
Acct. # 483

JERRY SADLER, Commissioner  
of the General Land Office  
Austin, Texas

Re: Surveys for patent  
Sections 36, 38, 40 & 44  
Block "C", CGSD & RGNG  
Upton County, Texas

Dear sir:

We are returning herewith a copy of the map that we made in August to accompany the field notes for patent on the captioned tracts.

We have lettered in red on the plat as we intend to prepare the field notes. Please examine these and inform us as to the acceptance or recommended changes. We are returning the first copy that you examined in August, too, for your information.

Please be advised that these distances and bearings are a result of surveys made on the ground, and in some instances we disagree somewhat with prior surveyors. An instance of this is along the South line of surveys 38 & 39 - Mr. Simpson shows 3736.2, which prorates 1868.1 per mile. We chained between monuments and find the South line of 38 to be 1915.6 and the South line of 39 to be 1915.9 varas. We have double checked our work and find this to be accurate.

We have also chained the entire East line on the plat and find the following differences: The first 2-miles from SW 54 check out with other's work. From there running Northwardly we find slight disagreement in the following category: Simpson shows, starting at the West line of 12, Northerly to the West line of 33; 1900; 1909; 1914 & 1914. We chained and double checked the following comparable lines at 1902.7; 1903.3; 1905.1 & 1905.7. Then along the South line of 36, 41 & 44 we chained a total distance to prorate out at 1909.7 varas per mile. This causes the axle at SE 44 to be 51.5 varas too far East. (Between the 1½" GIP at SW 44 to the axle at SE 44 chains 1915.2 varas.) And finally, the North line of 36, 41 & 44 finds us only 1.9 varas off the Simpson calls (he gets 1909 while we chained 1907.1).

We are tardy in returning this work to you and regret it, but just haven't had the time to work on it. However, with this "review" of our work and the changes we hope that you will see fit to approve the work. If there is any way that you can expedite this work we would appreciate it. The owner is now very anxious to have this work completed. Thank you.

Very truly yours,  
*Max A. Schumann Jr.*  
MAX A SCHUMANN JR

RECEIVED

MAS

NOV 6 1964

incl

General Land Office

November 12, 1964

Schumann Engineering Company  
Box 504  
Midland, Texas 79701

Attention: Mr. Max Schumann, Jr.

Re: Sections 36, 38, 40 & 44,  
CCSD&RGNG Ry. Co., Block C  
Upton County, Texas

Dear Sir:

We have examined your sketch reflecting the survey for the captioned sections and the construction now appears to conform to that indicated by the land office records.

Your sketch is being returned herewith and it is requested that you file a copy of this corrected sketch along with the corrected field notes to be submitted in connection with the patenting of the subject surveys.

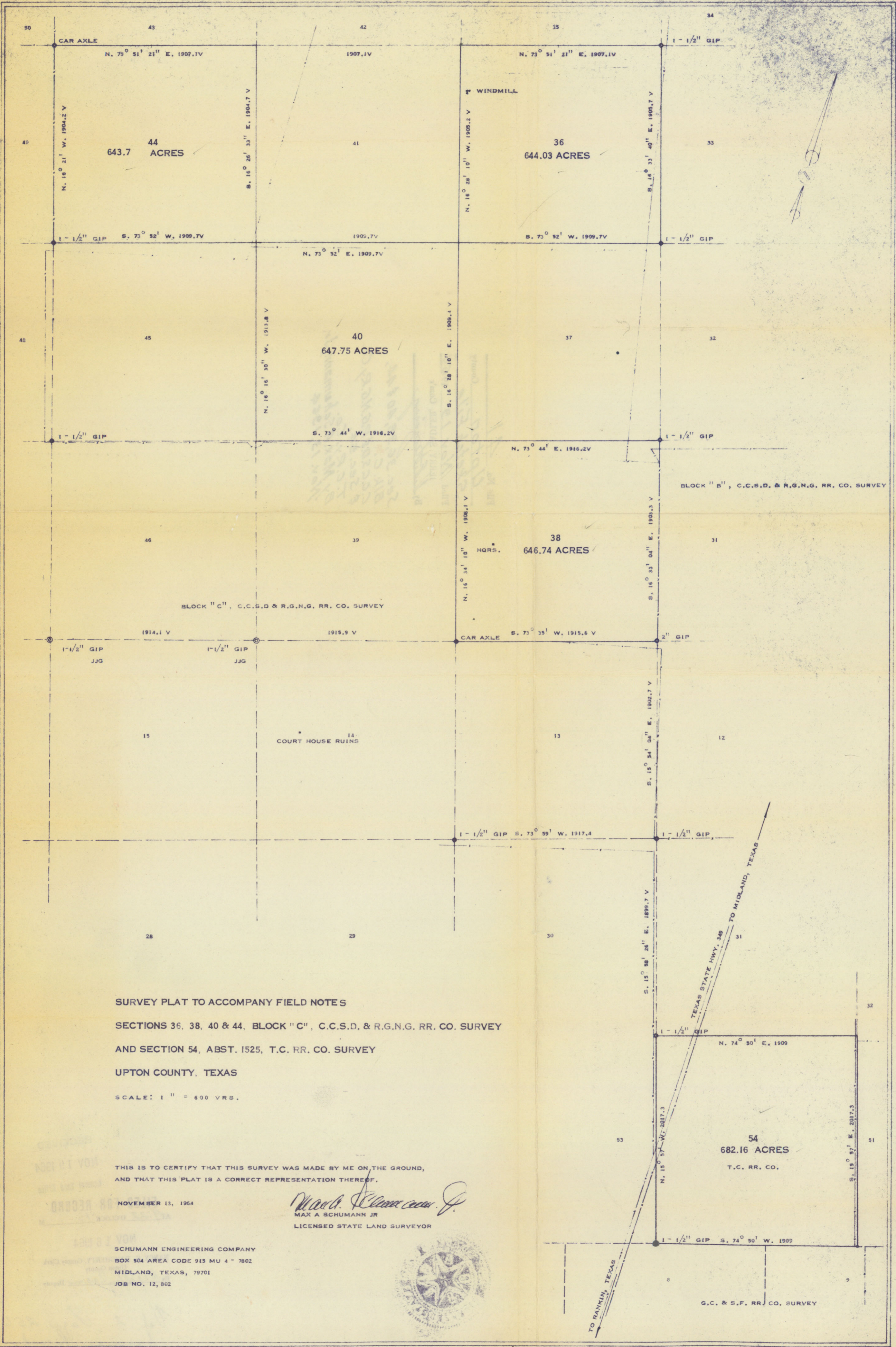
Thank you for your cooperation in resolving this matter.

Sincerely yours,

JERRY SADLER, COMMISSIONER

JS/ves  
Encl.

120255; 135861-2-3; 146474-5



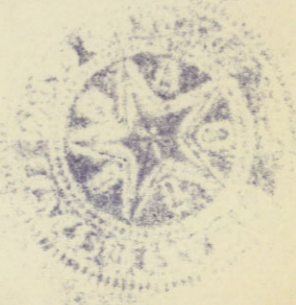
SURVEY PLAT TO ACCOMPANY FIELD NOTES  
 SECTIONS 36, 38, 40 & 44, BLOCK "C", C.C.S.D. & R.G.N.G. RR. CO. SURVEY  
 AND SECTION 54, ABST. 1525, T.C. RR. CO. SURVEY  
 UPTON COUNTY, TEXAS  
 SCALE: 1" = 600 VRS.

THIS IS TO CERTIFY THAT THIS SURVEY WAS MADE BY ME ON THE GROUND,  
 AND THAT THIS PLAT IS A CORRECT REPRESENTATION THEREOF.

NOVEMBER 13, 1964

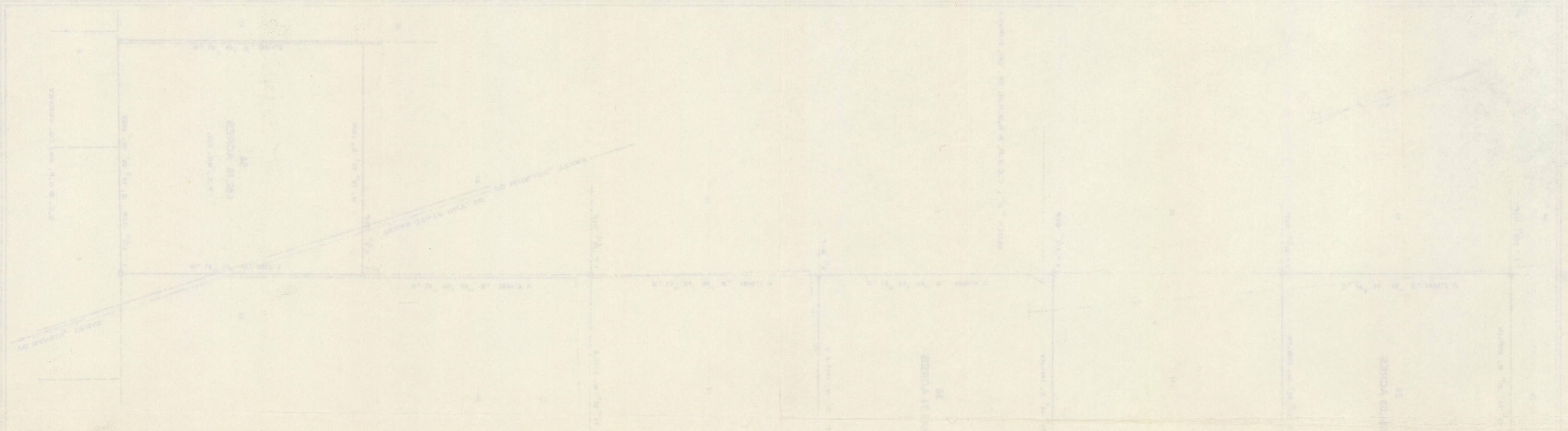
*Max A. Schumann Jr.*  
 MAX A. SCHUMANN JR.  
 LICENSED STATE LAND SURVEYOR

SCHUMANN ENGINEERING COMPANY  
 BOX 504 AREA CODE 915 MU 4 - 7802  
 MIDLAND, TEXAS, 79701  
 JOB NO. 12, 802



D-550

88345



File No. 41  
Upton County  
Sketch File  
 Filed Nov. 19 1964  
 JERRY SADLER, Com'r  
 By [Signature]

Sec. 36, 38, 40 & 44,  
Blk. C.  
C.C.G.S.D. & R.G.N.G. Ry. Co.  
& Sec. 5A.  
T.C. Ry. Co.  
By Max. A. Schumann, Jr.  
Nov. 13, 1964

*112*  
*115*  
 RECEIVED  
 NOV 19 1964  
 General Land Office  
 FILED FOR RECORD  
 AT 9:22 O'CLOCK A M  
 NOV 16 1964  
 NANCY K. DAUGHERTY, County Clerk  
 Upton County  
 By [Signature] Deputy  
 Vol 2 Page 256  
 Surveyors Records