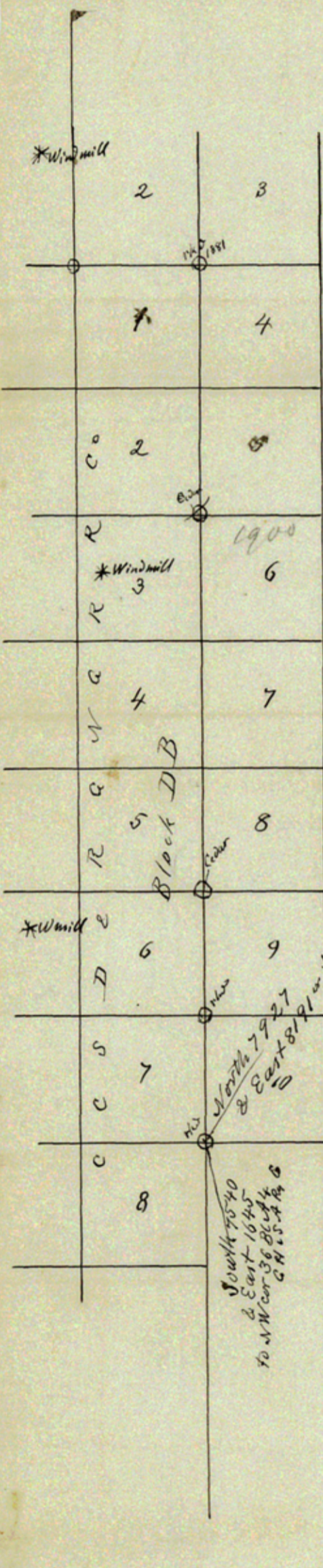


Filed Dec 29 1897  
 J. H. Brewer  
 Val Verde Co. Texas



Scale 2000 varas = 1 inch  
 Variation 9° 30' East  
 Dec. 27. 1897

J. H. Brewer  
 Co. Suror. Val Verde Co. Texas

Filed Dec. 29<sup>th</sup> 1897  
 H. J. Brown  
 Chief Clerk

Sketch file "B"  
 Val Verde Co.  
 See connections filed  
 same day.

12/29/97. Poreubing  
 D. J. Brown

See Sk 'B' by F. F. Friend 9.23/10.

Del Rio, Texas Dec. 27. 1897

Hon. Andrew J. Baker  
Com<sup>r</sup> Genl Land Office Austin, Texas

Dear Sir:

Herewith please find enclosed sketch of Surveys in Val Verde Co. In November I made a run from the N. cor. Sq 1. F. Gonzales (Camp Hudson) following the wagon road, up Devils river, — where the S.W cor Sq 6 B.C. 1. 12<sup>th</sup> G.H.R.R.C. should be, I found Live oak as marked on the sketch, but no corner, — the (centre of) 3<sup>d</sup> crossing is North 5194 vs & West 2905 vs from N. cor Sq 1 F. Gonzales — 410 varas North of said crossing are Sycamore trees in gravel bed of Devils river, but no bearing trees or rock mound. — From N cor Sq 1 F. Gonzales, North 11393 vs & West 4642 vs I find the rock mound, (250 vs East of Devils river) the NW cor 12, NE cor 13, 12<sup>th</sup> G.H.R.R.C. Bk C 1 Thence North 1900 vs.

Thence East 8857 vs & North 1850 vs I find Sycamore mott in bed of Devils river, as marked on sketch, old bearing trees are gone, (for NW cor 6, NE cor 7, Bk D

7600  
957  
85357  
8857  
G.C. S. F. R.R. Co

$$\begin{array}{r} W-2905 \\ \underline{1900} \\ 4805 \\ \underline{4642} \\ 163 \end{array}$$

$$\begin{array}{r} 3800 \\ 4012 \\ \underline{1900} \\ 9712 \\ \underline{1985} \\ 1997 \\ \underline{2047} \\ 15741 \end{array}$$

From S. E. cor. *7 Blk DB	North -	8191
North & East to S.W. cor. 15 Pecan Sp. sur.	7927 -	
From S.W. cor. 15 Pecan Sp. sur. North	1850 -	
East & North to S.W. cor.		8857
of Sur. *9 Blk D.	1900 -	
Thence North to N.W. cor. 13.	5912 -	
" East		328
" North	1997 -	
" East		997
" North	2047 -	
" East		1900
" North	1900 -	
to S.W. cor. *160 Beaver Lake sur.		
	23,533 -	20,270
(Total North 23,533 & East 20,270)		

Thence North 2112 var found rock ind in bed of Devils river,  
made by Mr Pierce, for SW cor 10, NW 9 Bk D.

— Thence North 1900 var rock ind SW cor 13, NW cor 10 Bk D  
Mesquite brushy flat to the S.W. no bearing Trees

— Thence N 1900 var rock ind on hill, now a fence corner,  
for NW cor 13. SW cor 14. Bk D

Thence N 1997 & East 328 var rock ind near ravine.

N 71 E 7 var. NW cor 14. NE cor 15. Bk D.

— Thence East 2894 var & North 3947 var to SW cor Sq 160  
1 & 9 N R Co. (Beaver Lake)

From NW cor 12, SE cor 14. C1. T. & G. N R Co. — South 7927 var  
& West 8191 var found SE cor 7, NE cor 8 Bk DB. C. S. D. R. G.

— Thence South 7540 var & East 1645 var found N.W. cor.  
Sq 36 Bk A4. G. H. S. A. Ry Co.

The corners marked in Block DB I have found  
distance between them I believe to  
be 1920 varas, & course North, Variation  
about  $7^{\circ}30'$  East, These runs I have made  
at various times, most of it in November,  
and I believe the distances, <sup>stated</sup> to have very  
little error, as given herein.

Hoping you had a merry Christmas  
and wishing you a prosperous New year  
I am  
yours respectfully

J. H. Brauer  
Co. Surv. V. V. Co.

Sketch File "B"  
Val Verde Co.

Connecting line  
and sketch in  
Val Verde County  
just North of old  
Camp Hudson.

Filed Dec 29/97.

J. H. Brauer  
Chief Clerk