

Surveyed by J. H. Brauer  
 March 24<sup>th</sup> 1898  
 Val Verde Co.

Map, showing connection lines  
 from Block DB & Block TN. to the N.W. corner  
 of Surv. N<sup>o</sup> 40 Blk III G.C.S.F.R.R.C. on the Pecos  
 thence up the Pecos, to its bend, coming from  
 the West, and up to the South line of Blk Q 4  
 T.C.R.R.Co. run by J.K. Pierce & J.H. Brauer  
 March 24<sup>th</sup> 1898

J. H. Brauer  
 Co Surv. V.V. Co.

Variation 9° 30' East





Rock Monument on the South side of the mouth of Howards Run  
 Thence S 2° W at 160 vs. connected to  
 stump of 2 pronged Willow, each prong 14" in dia.  
 supposed to be Kuechler's large tree to S.W. cor-  
 + c N 77° W 60 m dist. S 69 1/2° W 132 vs - Willow  
 immediately at water edge.

Thence continued S 2° W at 356 vs old  
 mouth of Howards Cr. S 57 1/2° W alt. 100 vs.  
 continued at 1403 1/5 alt. 70 vs dist. fr  
 the Peas.

Course	Dist.	N.	E.	S.	W.	
						1400 - 1399.49
N 2° W	1700			1700		1402.49
S 10° E	1716			1690	298	1432.49
S 61 1/2° E	2151			1026	1891	1319
S 85° E	337			29	336	113 431
N 85° E	267	23			266	
N 68° E	418	157			388	
N 55° E	232	133			190	
N 82° E	402	56			398	
S 73° E	123			36	118	
N 80° E	270	47			266	
N 87° E	239	12			239	
N 61 3/4° E	200	95			176	
N 54° E	207	122			168	
N 67° E	273	106			251	
N 65° E	924	390			838	
S 20° E	139			131	47	
N 50° E	300	193			230	
N 44° E	270	194			188	
East	443				443	
S 84° E	363			37	361	
S 68° E	382			143	354	
S 11° E	277			267	52	
S 2° W	91			91		3
S 24° W	214			196		87
S 43/4° W	304			303		25
S 14° E	288			279	69	5498
S 24° E	475			433	193	
S 6° E	80			79	8	
S 16 1/2° E	72			69	20	
S 45° E	99			70	70	
South	443			443		
S 8° W	275			272		38
West	260					

to Rock Monument 1528 0913 7858 633 7858  
 West bank of Peas 1528 633 431 202 7656 vs.

From State ind. on South side of Howards Creek  
 at its mouth to the ind. for point on West  
 bank of Peas river, just above Peas county School  
 Land.



		N	S	E	W		
N 33 3/4 W	1270	1056	—	—	51006		
S 85 W	2460	—	214	—	2451	2451	214
S 63 W	500	—	227	—	445		
S 52 W	650	—	400	—	512		
S 88 W	520	—	18	—	520		
N 89 1/4 W	780	10	—	—	780		
N 88 3/4 W	630	14	—	—	630		
S 60 W	570	—	285	—	494		
S 79 1/2 W	345	—	63	—	339		
S 85 3/4 W	290	—	21	—	289		
S 81 W	205	—	32	—	202		
S 68 W	708	—	265	—	656		
S 63 1/2 W	235	—	105	—	210		
S 8 1/2 W	125	—	124	—	19		
N 64 W	1553	681	—	—	1396		
N 70 W	240	82	—	—	225		
West	1040	—	—	—	1040		
North	4446	4446	—	—	—		
N 45 E	430	304	—	304	—		

3991  
2451  
-----  
1540  
214  
-----  
1754

8977  
214  
-----  
8763  
2451  
-----  
11214

6593 1754 304 11214  
1754  
-----  
4839 North & 10910 West  
West 220 220  
-----  
11130

from N. E. cor. sec. 9 & N.W. cor 8 blk QV3  
West 11130 or & North 4839 or. to  
upper cor. sec. 40 blk LLL & lower cor  
of N=145 log on Rly Co.

4/16/98 *Roubeaux* A  
counter 39056



		N	S	E	W	1789 1336 453-7209
East	1860	<u>5108</u>	<u>43</u>	1860	—	
North	40	40	—	—	—	
S 86 E	890	—	62	888	—	800-798-56 90-20-6
S 56 E	260	—	149	213	—	890-888-62 260-213-149
East	290	—	—	290	—	
S 77 E	280	—	63	273	—	280-273-63
S 60 1/2 E	740	—	364	644	—	740-644-364
S 52 E	160	—	98	126	—	160-126-98
S 73 1/4 E	130	—	37	124	—	130-124-37
S 66 1/2 E	1414	—	563	1297	—	1400-1284-558 14-13-5 1414-1297-563
N 59 1/2 E	1081	549	—	932	—	1000-862-508 81-70-41 1081-932-549
N 10 1/4 E	100	98	—	19	—	
N 8 E	700	693	—	97	—	500-382-323 35-27-23
N 40 1/4 E	536	<u>409</u>	—	<u>346</u>	—	506-409-346 200-190-62 66-63-20
N 18 W	266	253	—	82	—	253-82 253-82
West	1900	—	—	—	1900	Offenheimer Sp. 547 1/2 E 450
North	130	130	—	—	—	
N 37 E	953	761	—	574	—	900-719-542 53-42-22 953-761-574
N 14 E	160	155	—	39	—	160-155-39 190-189-15
N 4 1/2 E	190	189	—	15	—	
N 9 3/4 E	400	394	—	68	—	
N 34 3/4 W	154	167	—	—	116	150-123-85 54-44-31 204-167-116
North	146	146	—	—	—	
N 34 1/2 E	142	117	—	81	—	100-82-57 42-35-24 142-117-81
N 12 1/2 E	1090	1064	—	235	—	1000-976-216 90-88-14 1090-1064-235
North	640	640	—	—	—	
N 5 3/4 E	400	398	—	40	—	

6203 1336 8243 2016

From N.W. or upper cor. of 40 Nk LLL to S.E. cor. 19 & S. West 20 BIK Q4  
 county 139057 A2



N 8.6 S. 44 E 42 W 420-

NG 8	420	418	—	44	—	700-690-118
N 9 3/4 E	768	757	—	129	—	<del>68-67-11</del> 718-757-129
N 14 W	720	699	—	—	174	720-699-174
S 7 5/2 W	290	—	73	—	281	290-281-73
S 6 2/2 W	300	—	143	—	264	
South	79	—	79	—	—	
West	426	—	—	—	426	
North	2710	2710	—	—	—	
West	160	—	—	—	160	
North	1900	1900	—	—	—	500-465-183
N 6 8 1/2 W	501	183	—	—	466	<del>30-30-</del> 466-183
N 28 W	260	230	—	—	122	260-230-122
N 9 1/2 E	480	473	—	79	—	480-473-79
N 5 2 E	400	246	—	315	—	
N 3 E	1830	1828	—	94	—	1800-1798-94
N 13 1/4 E	972	946	—	222	—	<del>30-30-</del> 1830-1828-94
N 10 E	444	437	—	77	—	900-876-206
West	130	—	—	—	130	<del>72-70-16</del> 972-946-222
North	707	707	—	—	—	400-39K-65
West	120	—	—	—	120	<del>44-43-8</del> 444-437-77
North	690	690	—	—	—	
East	250	—	—	250	—	
North	150	150	—	—	—	
East	5700	—	—	5700	—	

12,374 295 6,910 2,143  
 6,203 1,336 8,243 2,016  
 18,577 1,631 15,153 4,159  
 1,631 4,159

North 16,946 & East 10,994



State of Texas }  
 Val Verde Co }

Var. 9<sup>30</sup> East Field notes of a Connection  
 line made by me from the S. E. Corner of  
 Blk T.N. S. L. + S. F. Ry Co in Val Verde Co to  
 the N.W. Corner of Survey No 40 in Blk L.L.L.  
 S. L. + S. F. Ry Co lying on the Pecan river - thence from  
 said N.W. Corner of Sur. 40. Made Connection  
 with Blk O X T.C. R.R. Co.

Beg. at the S. E. Cor No 11. Blk T.N.  
 N.W. Cor No 30 Blk D.B.

Thence West at 1900 R.R. md S.W. Cor No 11  
 S. E. Cor No 10. Blk T.N. and the N.E. Cor No 42  
 Blk D.B. - at 3800 the N.W. Cor No 42 Blk D.B.  
 and the S.W. Cor No 10 Blk T.N. at 57.00 was a  
 rock and the S.W. Cor No 13 + the S. E. Cor No  
 24 Blk T.N. at 7600 was a R.R. md for the  
 S. West Cor No 24 Blk T.N. at 9500 was made  
 a rock and for the N.W. Cor No 8 T.F. 4 Bradley and  
 N.E. Cor No 9 J.C. Whitley at 9720 was a pt

Thence N 33 <sup>3</sup> / <sub>4</sub> W	1270	was a pt	
" S. 85 W	2460	" "	
" S. 63 W	500	" "	
" S 52 W	650	" "	
" S 88 W	520	" "	
" N 89 <sup>1</sup> / <sub>4</sub> W	780	" "	
" N 88 <sup>3</sup> / <sub>4</sub> W	630	" "	
" S. 60 W	570	" "	
" S 79 <sup>1</sup> / <sub>2</sub> W	345	" "	
" S 85 <sup>3</sup> / <sub>4</sub> W	290	" "	
" S 81 W	205	" "	
" S. 68 W	708	" "	
" S. 63 <sup>1</sup> / <sub>2</sub> W	235	" "	
" S. 8 <sup>1</sup> / <sub>4</sub> W	125	" "	Near river
" N 64 W	1553	" "	
" N 70 W	240	" "	
" West	1040	" "	about 200 was from river
" North	4446	" "	
" N 45 E	430	"	R.R. md N.W. Cor No 40
" East	1860	"	



" North	40	" "
" S. 86 E	890	" "
" S. 56 E	260	" "
" East	290	" "
" S. 77 E	280	" "
" S. 60 1/2 E	740	" "
" S. 52 E	160	" "
" S 73 1/4 E	130	" "
" S. 66 1/2 E	1414	" "
" N 59 1/2 E	1081	" "
" N 10 3/4 E	100	" "
" N 8 E	700	" "
" <del>N</del> 40 1/4 E	536	" "
" N 18 W	266	" "
" West	1900	" "
" North	130	" "
" N 37 E	953	" "
" N 14 E	160	" "
" N 4 1/2 E	190	" "
" N 9 3/4 E	400	" "
" N 34 3/4 W	154	" "
" North	746	" "
" N 34 1/2 E	142	" "
" N 42 1/2 E	1090	" "
" North	640	" "
" N 5 3/4 E	400	" "
" N 6 E	420	" "
" N 9 3/4 E	768	" "
" N 14 W	720	" "
" S. 75 1/2 W	290	" "
" S. 62 1/2 W	300	" "
" South	79	" "
" West	426	" "
" North	2710	" "
" West	160	" "
" North	1900.	" "
" N 68 1/2 W	501	" "
" N 28 W	260	" "
" N 9 1/2 E	480	" "
" N 52 E	400	" "
" N 8 E	1830	" "

Appendix  
Springs on S 43 1/2 E 450 m

"G."  
 Skett file  
 Val Verde County -  
 Dunningburg  
 by J. A. Dine from  
 S. E. corner Sect T. N. 9. R. 8. S. 4.  
 Ry. Co. to the N.W. corner of survey  
 No. 40 Block LLL S. 6. R. 8. S. 4. Ry. Co.  
 thence to Mark Q. T.  
 found in General Land Office  
 March 28 1898.  
 J. W. Broun  
 DeWitt  
 DeWitt



Continued from page 2

"	N 13 1/4 E	972	"	"
"	N 10 1/2 E	444	"	"
"	West	130	"	"
"	North	707	"	"
"	West	120	"	"
"	North	690	"	"
"	East	250	"	"
"	North	150	"	R.R. mt. in ravine side of line
"	East	at 1900	"	S.W. Cor no 18

at 3800. R.R. mt S. E. Cor no 18. at 5700. R.R. mt  
in valley S. E. Cor no 19 + S. W. Cor no 20 R.R. Q 4

Survey up the river Pecos from survey  
no 40. R.R. L.L.L.

Beginning at its N.W. Cor on the river  
thence N 34 1/2 E 260 yds a pt

" N 40 E at 30 yds Canon at 150  
yds xing Canon a pt

thence N 15 1/4 E over high bluff bank of river  
480 yds a pt

thence N 18 1/2 E 300 yds a pt

" N 5 E 430 " "

" N 57 E 110 " "

" N 49 1/2 W down trail 500 yds a pt  
in valley

thence N 13 E 320 yds pt

" N 11 3/4 W 350 " "

" West 10 " " on river

" North on river bank under bluff  
Cor yds a pt on bluff

thence N 54 1/2 W 210 yds pt on sharp bluff bank of river

" N 74 1/2 W 200 " " " " " "

" N 86 1/2 W 453 " " " " " "

" West 40 " " " " " "

" S 85 W 340 " " " " " "

Surveyed March 7<sup>th</sup> to the 18<sup>th</sup> 1898

counter 39061

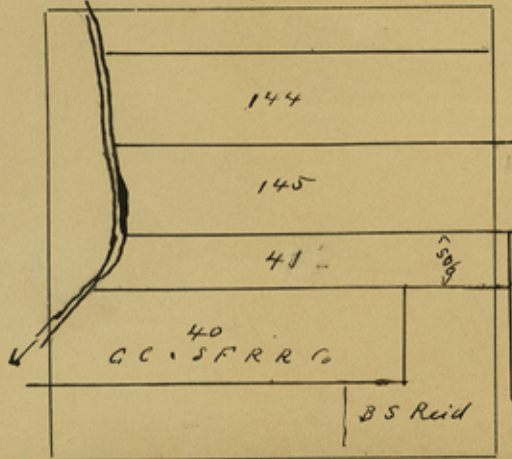


VAL VERDE CO. ST. FILE #117  
Bud Lamson }  
Henry Birdwell } Chairmen

John L. Pierce Secy



VARIATION  $9^{\circ} 30'$  EAST.



THE STATE OF TEXAS,

Survey  $N^{\circ} 41$

Val Verde

County.

Block  $1, 1, 1,$

Field Notes of a Survey of  $372 \frac{1}{2}$

acres of Land, made for *Wilkins Bro<sup>s</sup>.*

*being public domain*

By virtue of *their Application to lease*

Scale  $2000$  Varas per Inch

Said Survey is No.  $41$ , in *Val Verde* County, Texas, situated on the waters of *the Pecos* a tributary of *the Rio Grande* about  $62$  miles  $N 40^{\circ} W$  of *Del Rio*

Beginning *at a rock mound on East bank of the Pecos near the N. W. corner of Survey N<sup>o</sup> 40 Blk 1, 1, 1, G. C. S. F. R. R. Co. Cert N<sup>o</sup> 3532.* from this rock mound

*a Mountain bears  $N 38^{\circ} W$  about 3500 vrs, another Mountain bears  $N 45^{\circ} W$  about 3000 vrs.*

*Thence East, at 3253 varas the N. E. corner of said Survey N<sup>o</sup> 40, 4326 varas to the N. E. corner of the B. S. Reid Survey.*

*Thence North 506 varas to a stake on the South line of Surv N<sup>o</sup> 145 G. C. S. F. R. R. Co.*

*Thence West 4034 varas to the S. W. corner of said Survey N<sup>o</sup> 145, on high East bank of the Pecos*

*Thence down the Pecos, with its meanders  $S 15 \frac{1}{4}^{\circ} W$  183 varas,  $S 40^{\circ} W$  150 vrs.  $S 34 \frac{1}{2}^{\circ} W$  260 varas*

to the place of the beginning.

Bearings marked

Surveyed *March 17<sup>th</sup>* 1898

*Bob Larrison*

*Henry Bidwell*

Chain Carriers.

I, *J. H. Brauer*

Co Surveyor of

*Val Verde Co*

do hereby certify that the foregoing survey was actually made on the ground according to law, and that the limits, boundaries and corners, with the marks, natural and artificial, are truly described in the foregoing plat and field notes.

*J. H. Brauer*

Co

Surveyor of

*Val Verde Co*

I, *J. H. Brauer*

Co Surveyor of

*Val Verde Co*

do hereby certify that I have examined the foregoing plat and field notes, and find them correct, and that they are recorded in my office in book  $1$ , page  $279$

*J. H. Brauer*

Surveyor of

*Val Verde Co.*



Sketch File "C"  
— Val Verde Co. —

Filed in Genl. Land Office  
March 28/98.

Tom Rosenberg  
Deftsmen



AUSTIN  
MAR 27  
8-AM  
1898  
TEX.

Rise  
3/28/98

Sketch file  
Val Verde County  
Sketch file

Filed in Genl Ld. Office  
March 28/98.

Print on Raubay  
Sftoman

DEL RIO  
MAR  
25  
11 AM  
1898  
TEX.

Sketches & Con. Lines by JK Pierce  
from SE Cor, BIK "TN", GC & SFRYG  
to NW Cor. 40. BIK LLL, thence to

BIK QA, etc, etc,

Dated March 25, 1898

Filed March 28, 1898-

J. H. Brown  
& Rurveyer

...VAL VERDE COUNTY...  
DEL RIO, TEXAS

counter 39065

How  
Court and Land Office 33



...County Officers...

J. G. GRINER, . . . . . County Judge  
E. S. BLOCK, . . . . . County Attorney  
G. W. BROWN, County and District Clerk  
J. M. GRAY, . . . . . Treasurer  
JOHN GLYNN, . . . . . Tax Assessor  
J. H. BRAUER, . . . . . Surveyor  
W. H. JONES, Sheriff and Tax Collector  
A. B. ROSE, . . . . . Inspector

2972

VAL VERDE COUNTY

...Commissioners...

LOUIS KIEFFER, . . . . . Precinct No. 1.  
ROBERT GREENWOOD, . . . . . Precinct No. 2.  
G. O. STRICKLAND, . . . . . Precinct No. 3.  
N. G. KING, . . . . . Precinct No. 4.

Del Rio, Texas, March 25 1898

Hon A. J. Barker Comr Genl Land Office  
Austin City

Dr Sir

Enclosed please find the survey  
made by me of the connections as will be  
shown as in within sketch. also Field  
Notes of survey no 41 in Book L L L and  
an Application for lease of same by  
Mess Wilkins Bros. of Comstock Texas

Yours truly  
John H. Peirce

Apt to lease  
sent to school Rd  
Sept