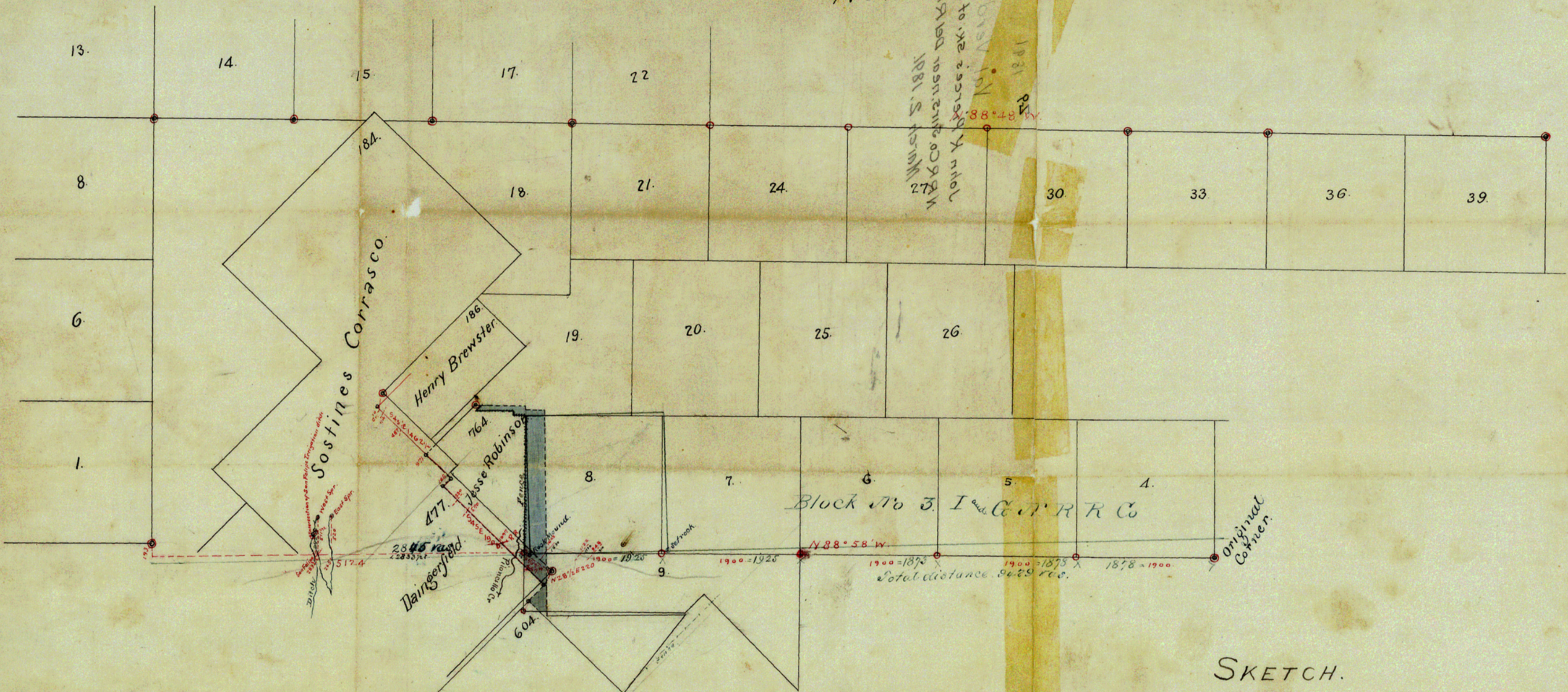


N^o 2.

Warrant S. 1881
27th Co. 2nd Dist. Del Rio
John K. Pierce 26th of 1881
Val Verde
1881
88° 48' W.



SKETCH.
OF
I & G N R R LANDS
NEAR DEL RIO TEXAS.
SCALE 1000 YAS = IN.
Variation 9° 30 East

I J. K. Pierce County Surveyor Val Verde County Texas.
Do hereby certify that I ran from the mouth or head of the
San Felipe Ditch with a variation of 8° 30' East South 312 ras --
- Thence East at 47 ras cross Spring branch at about 200 ras cross
San Felipe Creek at 2794 ras cross a branch. 2899 ras to an
Earth Mound on line of fence course North. Continued East
for 9429 ras and came to a large Earth Mound from which
Near stump 6 in dia brs S 52 1/2° W 26 ras a Forked Mesq stump
brs N 14 1/2° E 15 ras. the original S.E. corner of Survey No 4 Block
No 3 I & G N R R Co. Figures in blue indicate line run.
Del Rio Texas. Conflict colored blue.
March 2nd 1891.

John K. Pierce
Co. Sur. V. V. Co.
Tex

COUNTY # 18224