

(7)

North

E L & R R

R. R. Co.

G. H. & H. R. R. Co.

Block A. 1

Block D 8

E L & R R Co.

Block D 7

T. I. & M. F. Co.

Handwritten notes on the left margin, including "S. W. Co." and "D. W. Co."



By John H. Peirce Sur  
 Del Rio Texas  
 May 24<sup>th</sup> 1895

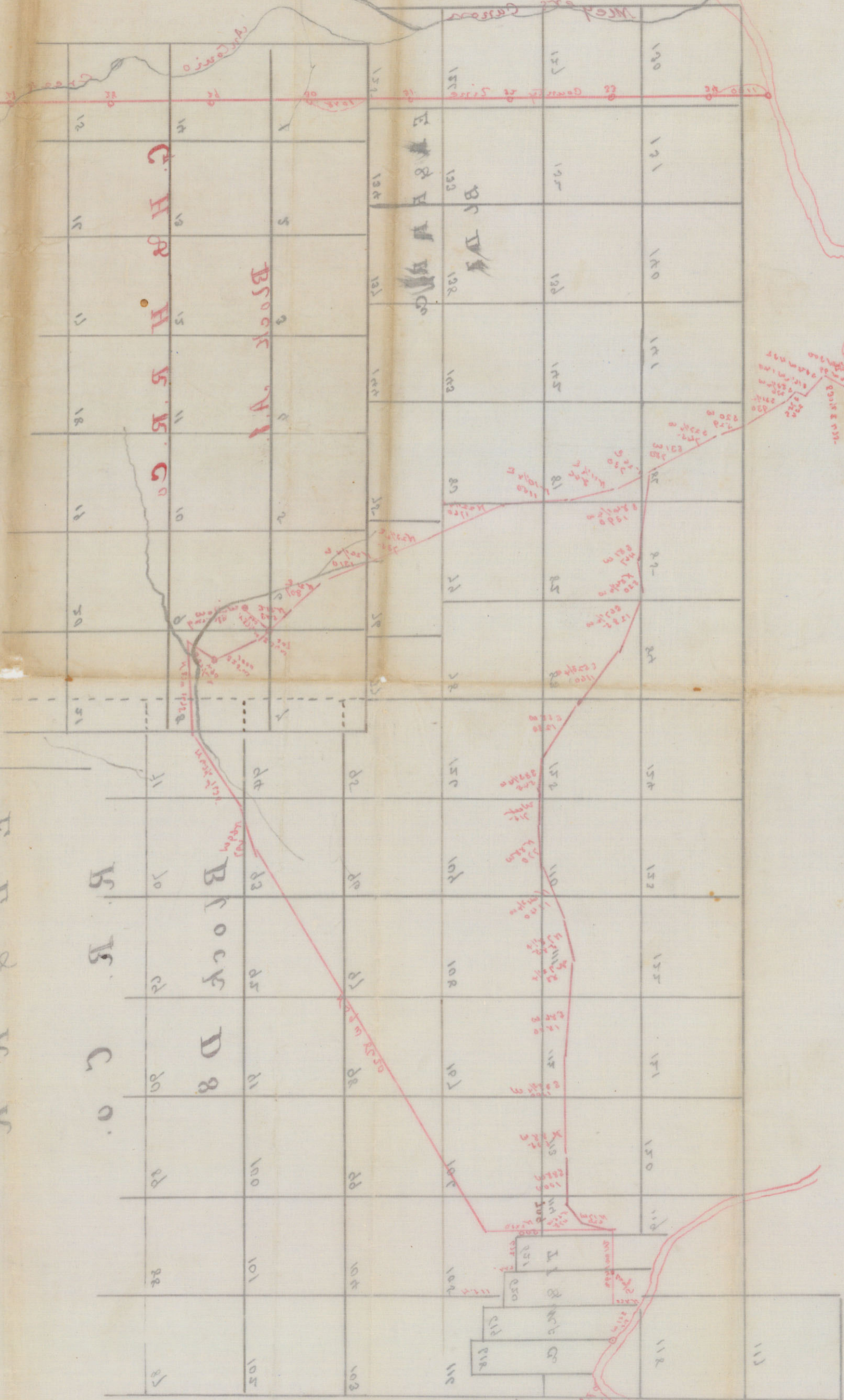
See field notes of connecting lines

See also from Peirce



Val Verde Co.  
S.W. corner  
of County

March 24<sup>th</sup> 1882  
Geo. W. Davis



Geo. W. Davis



(K)

Connecting line from the S. E. Corner of survey  
No 619 in the name of Torres, Dr & Mfg Co. (from wh. a Pillar  
between two corners No. 72 E.) to the S. E. Corner of survey  
No 9 G. H. & N. R. R. Co. Blk A. 1.

Beginning at the S. E. Corner of survey No 619. Torres Dr.  
& Mfg Co.

Var. 10° 50' thence S. 51. W 865. 200 -

Surveyed Feb 16 1891 thence North 460 200

thence West 1492 200. a rock mid in west line Simpson Hallway

Var. 9° 30' thence North 22.50 200

thence N 59 W 8620 200

Surveyed Feb 50 1891 thence N 59 W 897 200

thence N 47 1/2 W 1635 200

thence N 87 W 1675 200

thence S. 1/2 E 490 ma large rock mid supposed <sup>SE</sup> Cor No 9 G. H. & N. R. Co.

Var. 10° 50' thence S. 25 W 1000. 200

Surveyed Nov 29 1892 thence S. 34 W 307 200. rock mid the true Cor. No 9 G. H. & N. R. Co.

John K. Peirce Sur  
Del Rio Tex



Connecting line from the call west 1492 m. road and  
in west line Simpson Holloway survey, to a point on  
the Rio Grande -

Beginning at the 1492 m pt

Var 10° 50' N. 17° W. 620 m

" N 55° W 478 m

" S. 88° W 1000 m

" N. 88° W 635 m

" S. 88 3/4° W 1300 m

" S. 86° W 1800 m

" N. 73 1/2° W 88 m

" N 78 1/4° W 585 m

" N 54 3/4° W 1140 m

" N 88° W 770 m

" West 715 m

" S. 83 1/4° W 545 m

" S. 58° W 1230 m

" S. 52 3/4° W 1160 m

" S. 67 1/2° W 1285 m

" N 84 1/4° W 530 m

" S. 81° W 467 m

" S. 84 1/4° W 1390 m

" S. 31° W 780 m

" S. 27 1/4° W 745 m

" S. 20° W 529 m

" S. 31 1/2° W 930 m

" S. 53 1/4° W 270 m

" S. 75° E 234 m

" S. 16 1/2° W 140 m

" S. 54° W 432 m

" S. 30 1/2° W 475 m

" S. 4° W 99 m

" S. 34 3/4° W 300 m. a pt at mouth of current course  
of river S. 16 E. 500 m. N. 46 1/2° W 600 m -

John N. Pierce Sur

Del Rio Tex

May 2 + 3m 1895-

X  
January



Connecting line from the call S. 84 1/4 W 1390 (refer to plat  
No 2. Call. mark X) to the S. E. Corner No 9 G.H. & H. R.R. Co. Block A. 1

Beginning at the end of the 1390 m. plat -

Var. 10° 50' Hence N. 26° E 730 m.

" N 11 1/2 E 846 m.

" N 10 1/4 E 1150 m.

" N 22 1/4 E. 1760 m.

" N 23 1/2 E 735 m.

" N 26 1/4 E 1310 m.

" N 21 E 807 m.

" N 55 E 583. m. S. E. Corner of survey

No 9 G. H. & H. R. R. Co. fr. wh. Willow Spring for N 37 1/2 W  
600 m.

Surveyed May 4 1891

John R. Peires Surveyor  
Del Rio  
Tex



Z-10  
1895

5.24-95

John K Pierce's SK. of sure.  
in BIKS. A1, D7, D8.  
Dated May 24, 1895.

#100 Raw