

Cadast 10 61 N20 E 106 00
Dulle 10 61 N20 W 68 00



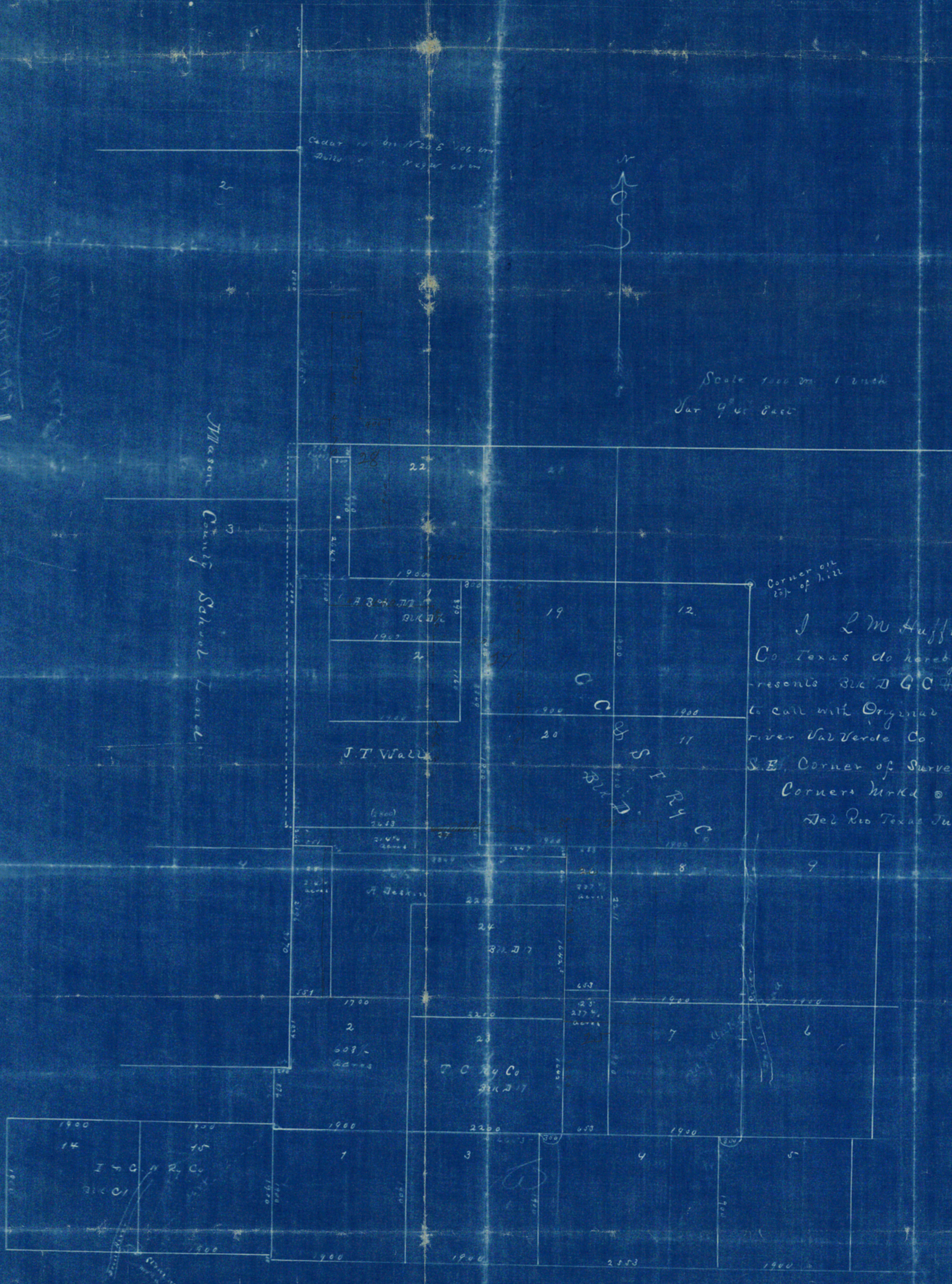
Scale 100 m 1 inch
Jan 9th 1880

Mason County School Land

Corner on
E. of Hill

I L M Huffman County Surveyor of Val Verde
Co. Texas do hereby Certify that this sketch correctly re-
presents Bk D G C & F Ry Co Surveys connecting according
to call with Original Bk C I J & K Ry Co Surveys on Devils
river Val Verde Co. Also connecting line with the Original
S.E. Corner of Survey of Mason Co School Land.
Corners marked with \odot were found and identified
Del Rio Texas July 27th 1905

L. M. Huffman Co Sur
V.V.C.



1880
1880

H