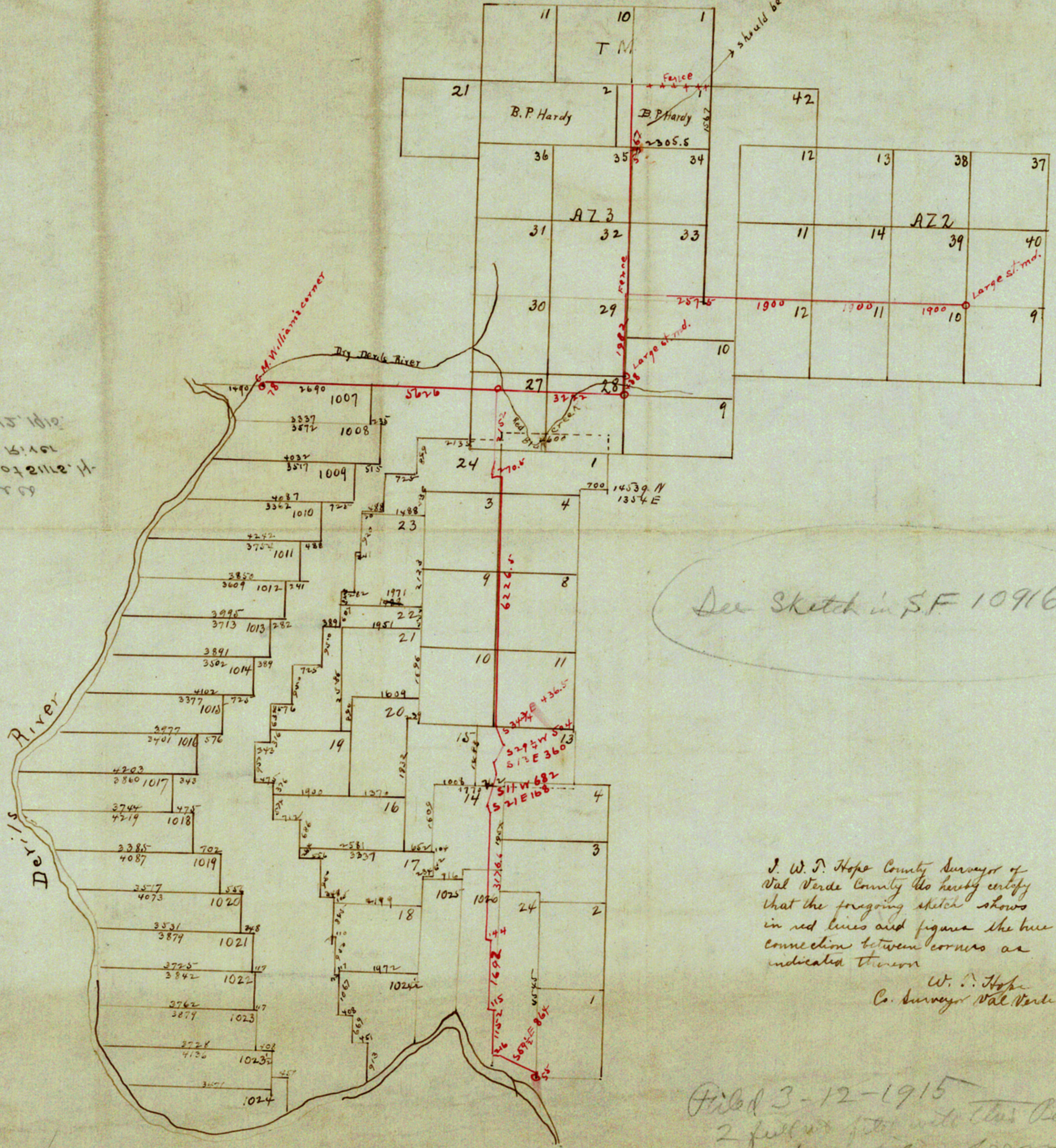


Date March 13 1915  
 1/2 E of Devils River  
 W. J. Hope & Co. Surveyors  
 15-2



I, W. J. Hope County Surveyor of  
 Val Verde County do hereby certify  
 that the foregoing sketch shows  
 in red lines and figures the true  
 connection between corners as  
 indicated thereon  
 W. J. Hope  
 Co. Surveyor Val Verde Co. Texas

Filed 3-12-1915  
 2 full set filed with this Record  
 note for filing fees  
 (Signature)