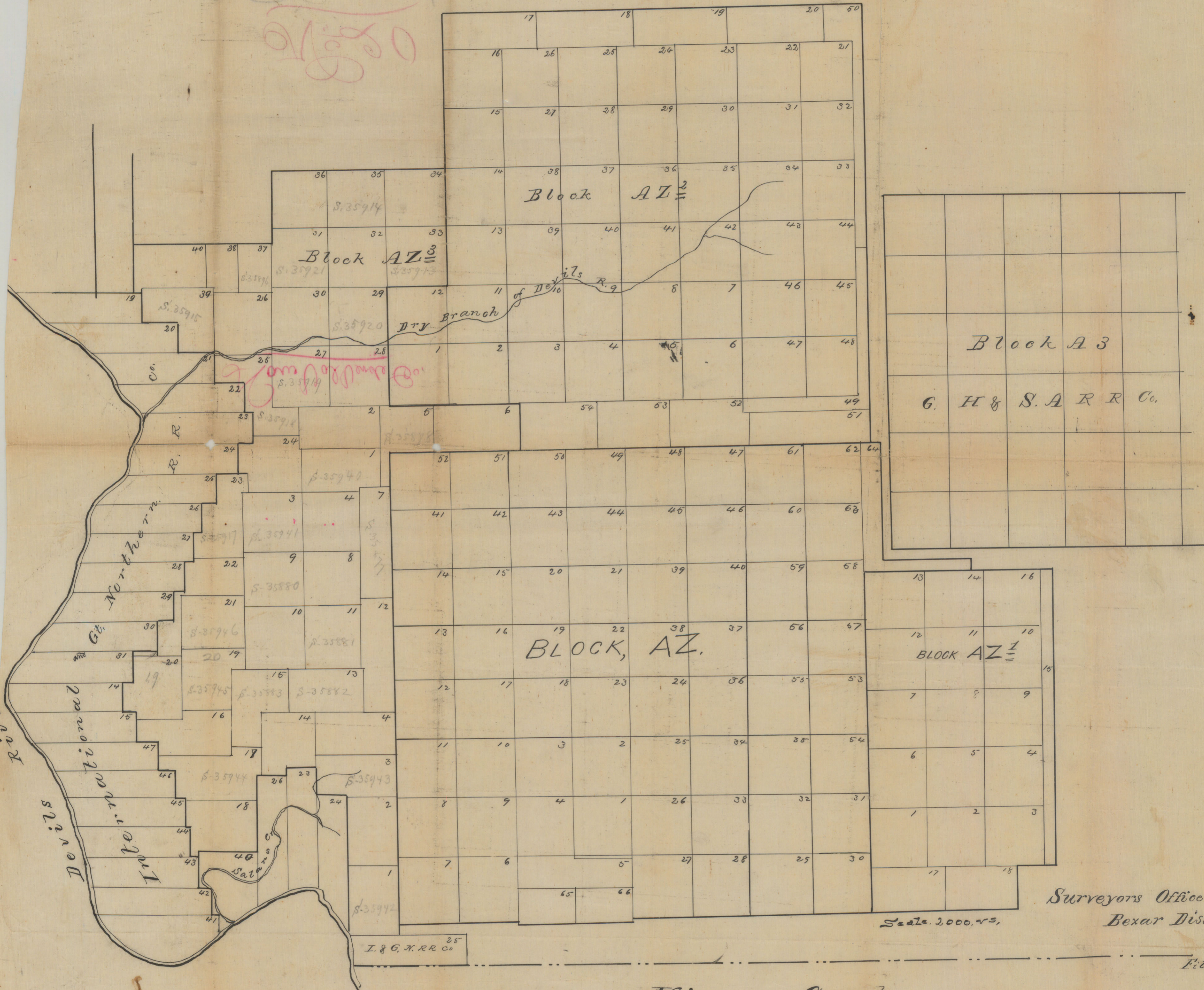


SKETCH 2

OF
Blocks AZ, AZ¹, AZ², AZ³
IN
Crockett County,



Scale 2000 ft.

Surveyors Office
Bexar District,
Oct. 26th 1881.
Filed Novemb. 19/81.

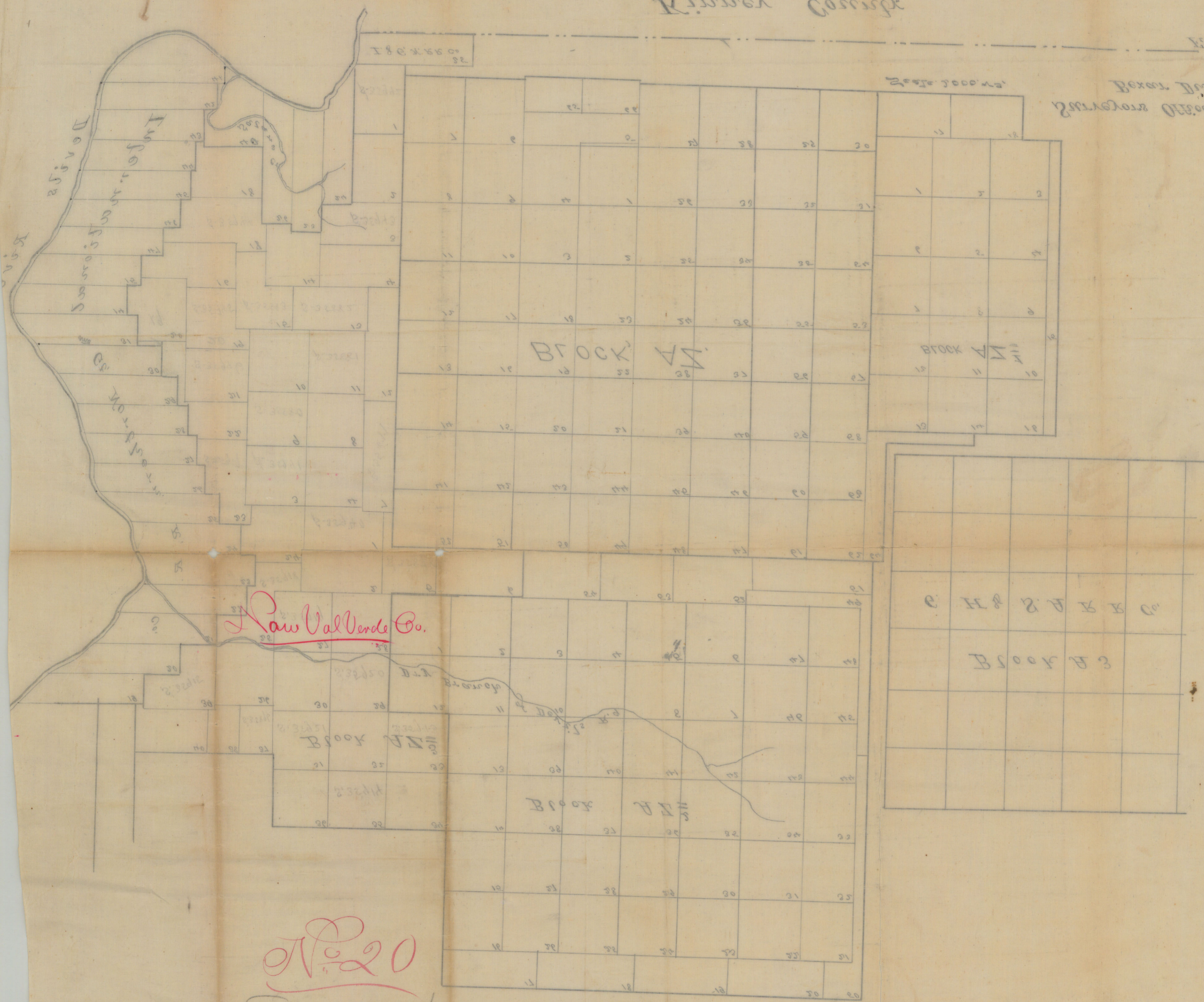
Kinney County

Known Corner

1850

Oct 20 1850

Surveyor's Office

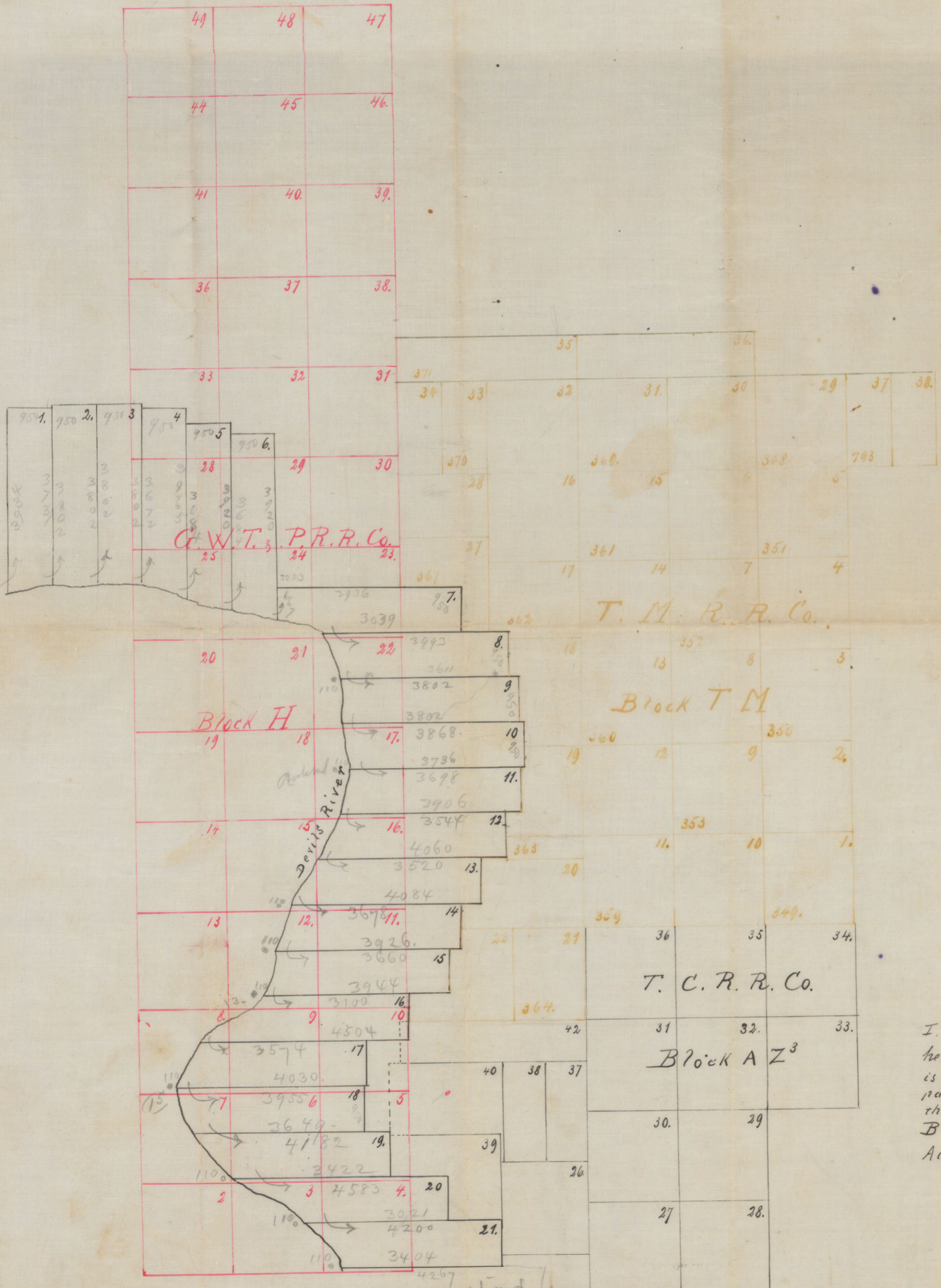


Law Val Verde Co.

No. 20

Surveyor's Office
Block 10
139 1/2 133
SKETCH

55746
54149



[Faint handwritten notes]
 1911 Dec. 1st 1890
 1911 Dec. 1st 1890
 E. J. 50

T. M. R. R. Co.

Block T M

T. C. R. R. Co.

Block A Z³

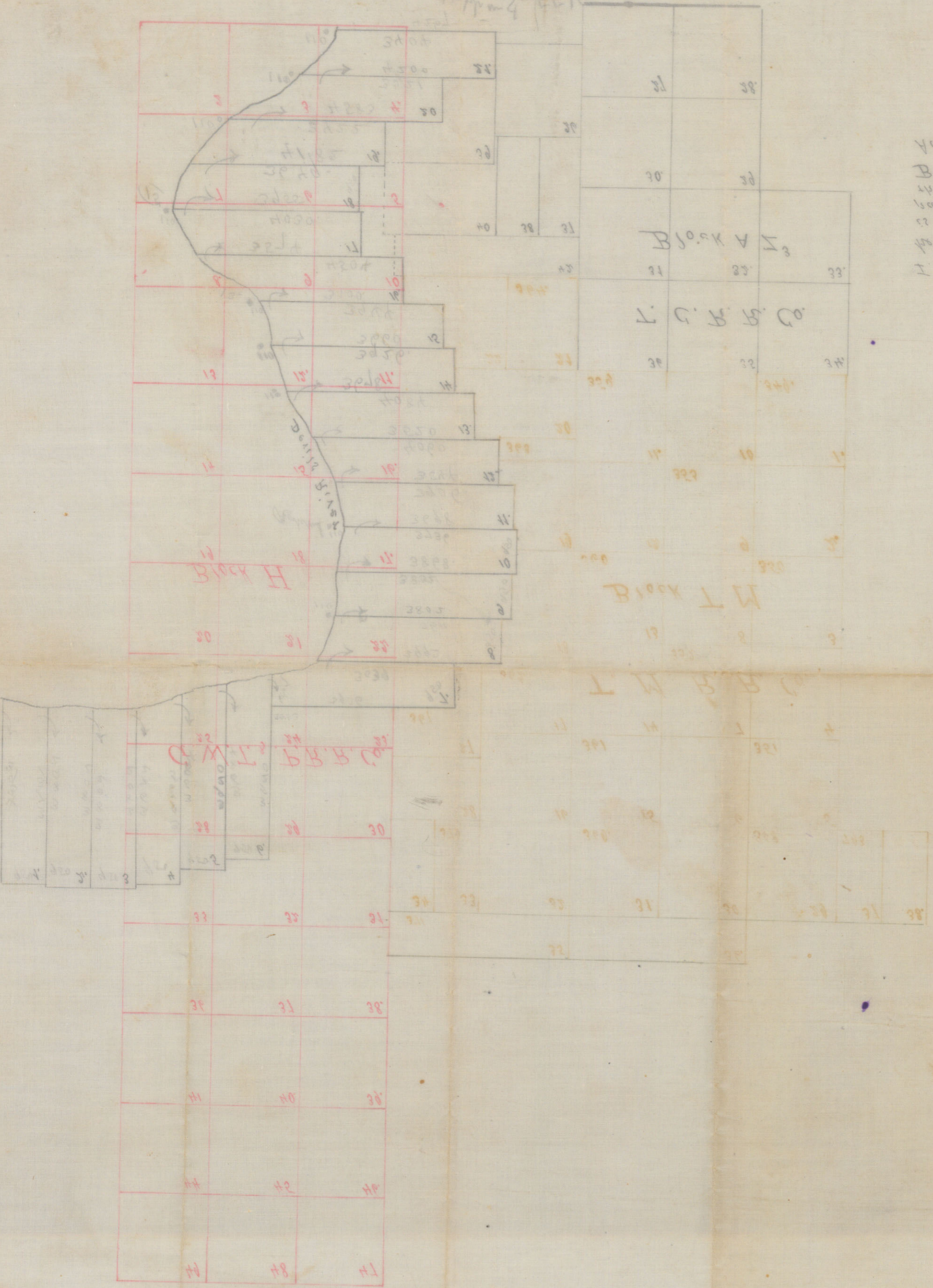
I. Paul Hesse, State Surveyor do hereby certify, that the foregoing is a true and correct sketch of a part of Val Verde County showing the true position of Tex. Mex. R. R. Block T M³

Austin, Dec. 1st 1890
 Tex

Paul Hesse
 State Surveyor

See sketch in S-55197

Plat 2-1000



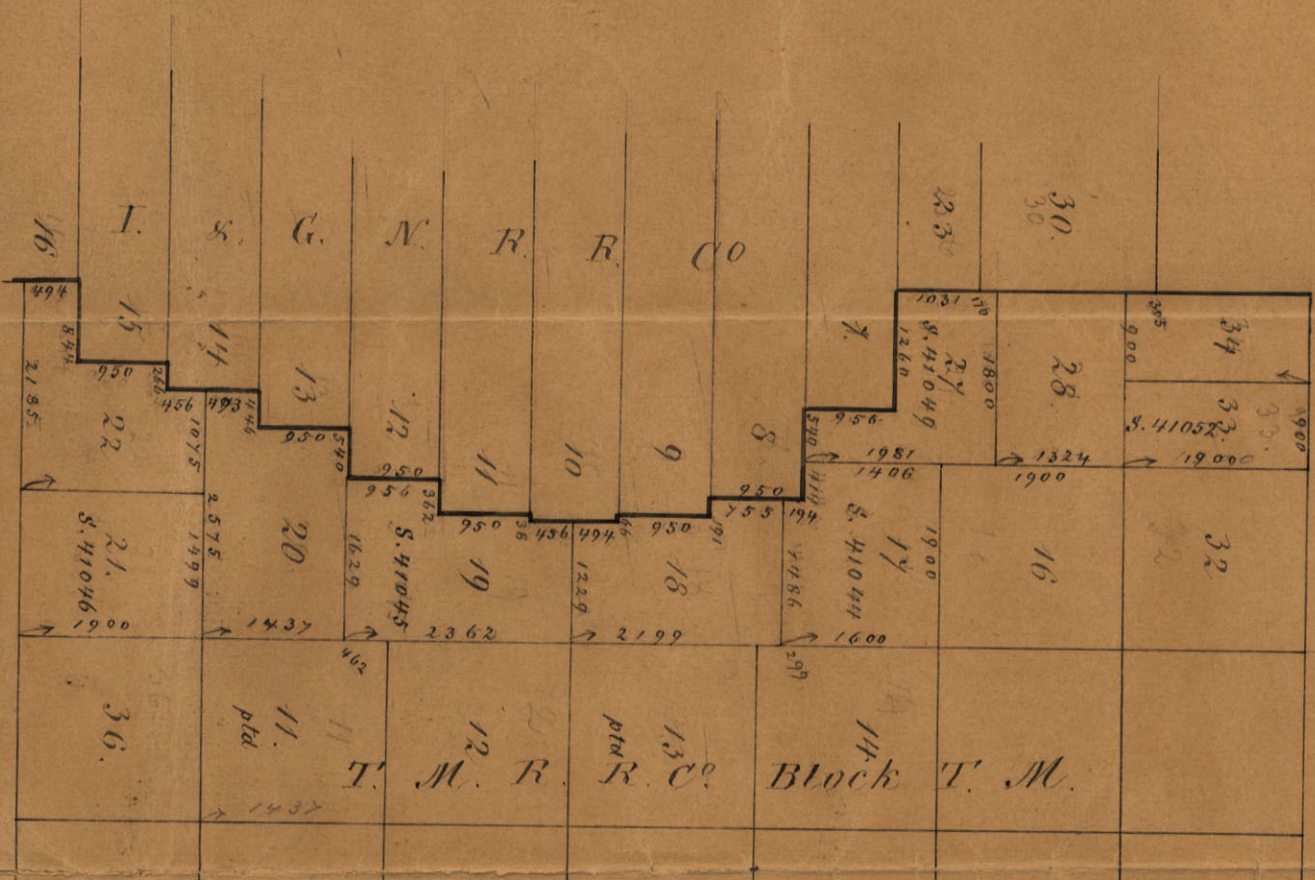
1891
 000121000
 W. T. M.
 the true location of the Mex. B. R.
 road is shown by the dotted line
 in the above plat, and the
 distance of the line is shown
 in the plat.

File 20

Val Verde Co

Filed March 19/91.

C. B. Brantley
 Chief Clerk



File 20

Val Verde Co

88364

20

Val Verde
3 SKs, all numbered 20,
- Sundries -