

W  
W  
88th  
89th  
W  
W  
W  
W

Sketch not adopted  
P. von Roehren  
S. Brown

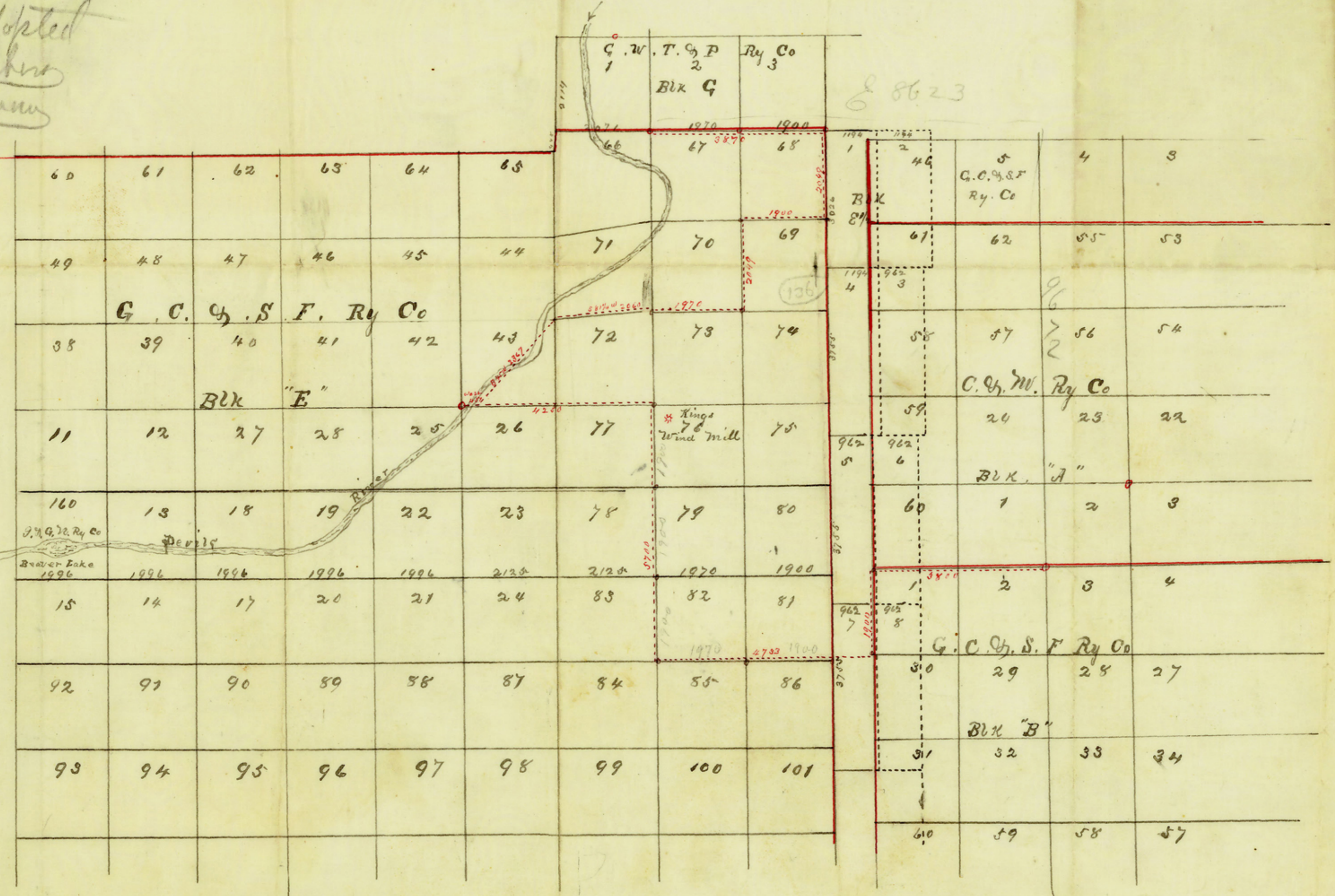


Scale 2000.000. 1 inch

2

Sketch not adopted  
P. von Roehren  
S. Brown

I John K. Pearce County Surveyor  
Val Verde Co Texas do hereby Certify that  
the foregoing Map together with the  
Connection Lines shown between Blocks  
"A" C.W. Ry. Co. "E" G.C.S.F. Ry Co are  
correct as run by me on the ground  
John K. Pearce Co Sur.  
Val Verde Co Texas  
Del Rio April 1892  
Surveyed 10<sup>th</sup> to 15<sup>th</sup> March 1892



COUNTY # 10230

5'

The State of Texas }  
 County of Val Verde } Plat Any Field Notes  
 of a Private Survey  
 made for W. G. King to determine on  
 the ground the true position of Blk E 1/2  
 Co. Any S. F. Ry Co. Val Verde Co Texas  
 Beginning at the S. E. Cor No 1, Blk G  
 S. W. T. & P. Ry Co, an old rock md any the  
 original bearings still on the ground as  
 called for in field notes.

Hence East at 1970 vrs pass a rock md  
 the N.E. Cor No 67 Blk E. S. F. Ry Co  
 at 3870 vrs Another rock md, marked  
 N.E. 68.

Hence South at 2049 vrs made a  
 rock md for S.E. Cor No 68 + N.E. Cor No  
 69 same blk.

Hence West at 1900 vrs made a rock  
 md for the S.W. Cor No 68, N.W. Cor No 69

Hence South at 2047 vrs made a rock md  
 for S.W. Cor No 69, + S.E. Cor No 70.

Hence West at 1970 vrs made a rock md  
 N.E. Cor No 72, S.W. Cor No 70.

Hence S.  $81\frac{1}{4}^{\circ}$  W. at 2060 vrs made a large  
 Rock pile in Low river valley. for the S.W.  
 Cor No 71, N.W. Cor No 72

Hence S. 45. W at 400 vrs Devils river at  
 650 vrs Cross same at 1300 vrs same  
 river at 1700 vrs Cross the same at 2367  
 vrs a pt in north line of No 26. same blk

Hence West at 421 vrs Cross river at 451  
 vrs, a rock md the N.E. Cor No 26, the  
 same as called for in the Original Field Notes

Hence East at 4250 vrs made a rock md  
 for the N.W. Cor No 76, N.E. Cor No 77 <sup>by Rounding</sup>

Hence South at 272 <sup>less 145 = 127 vrs</sup> vrs a pt fr. wh. has  
 N. S. Kings Wind Mill for East 340 <sup>837 = 1177 by R.</sup> vrs at  
 1900 vrs made a rock md for the N.E. Cor No

78, S.W. Corner No 76. at 3800 vrs made a  
 counter 39231

the S.W. cor. of No 60 Blk A. is one mile north of the point here indicated. Evidently the sum of omitted one corner (north 1900 vrs) is not  
 E. G. Beam draughtman

File 21.

Valverde County

Cornering line between  
Blocks E and A.

Filed in the General Land  
Office April 18/92.

See sketch file.

Wm Braubach  
Chief Clerk

H. 25 ①

S-40217

The construction of  
Block E according to  
the original bearings or  
corners called for in the  
field notes of D & W. & Co.  
will not apply to the  
S.F. & Co. see survey  
of correction in S-40217

Braubach

counter 39232

2  
00

According to sketch N-21, filed along with these notes.

rock end for S. E. Cor No 78. S. W. Cor No 79  
at 5700 vs made a rock end for the S. E.  
Cor No 83. S. W. Cor. No 82.

Thence East at 1970 vs made a rock end  
for S. E. Cor No 82. S. W. Cor No 81, at 3870 vs  
made a rock end for the S. E. Cor No 81.

N. E. Cor No 86 at 4733 vs a pt in  
West line of No 30. Blk "B" G. C. Ry S. F. Ry Co  
Thence North at 200 vs made a rock end  
for N. W. Cor No 30 Blk B and S. W. Cor

No 1. Same Block \* and for S. W. Cor No 60  
Blk "A". A. O. M. Ry Co.

Thence East at 3800 vs a rock end  
the original as called for in Field  
notes. The logs still on the ground.

I found that Blk "E 1/2" G. C. Ry S. F. Ry Co  
has, only a width East and West  
of 863 vs — for further reference  
see accompanying map

Surveyed 12<sup>th</sup> to 1<sup>st</sup> March 1870

S. M. Halstead  
W. M. Sauerbitch G. C.

I John H. Peirce Co. Sur. Val Verde  
Co Texas do hereby Certify that  
the foregoing Survey was actually made in the  
field according to law and that the limits  
boundaries and corners, with the masses  
Natural and Artificial, are truly described in  
the accompanying Map and Field notes

John H. Peirce Co. Sur  
Val Verde Co Texas

Recorded in Vol 2 page 113 in  
My Office John H. Peirce Co Sur

The actual width of Blk E 1/2 is 1924 vs. and  
not 863 vs. as stated above, see Surveyor's cert. of  
correction in S-40217 instructing the corner to strike  
out all corners calling for bearings in field note of survey  
in Blk E. see E. van Rosenberg  
and Sketch in Book S-51368.

John H. Peirce Co  
counter 39233