

I, H. Conger Jones, Surveyor of Val Verde County, Texas hereby certifies that this sketch shows lines and landmarks as I actually found them on the ground.

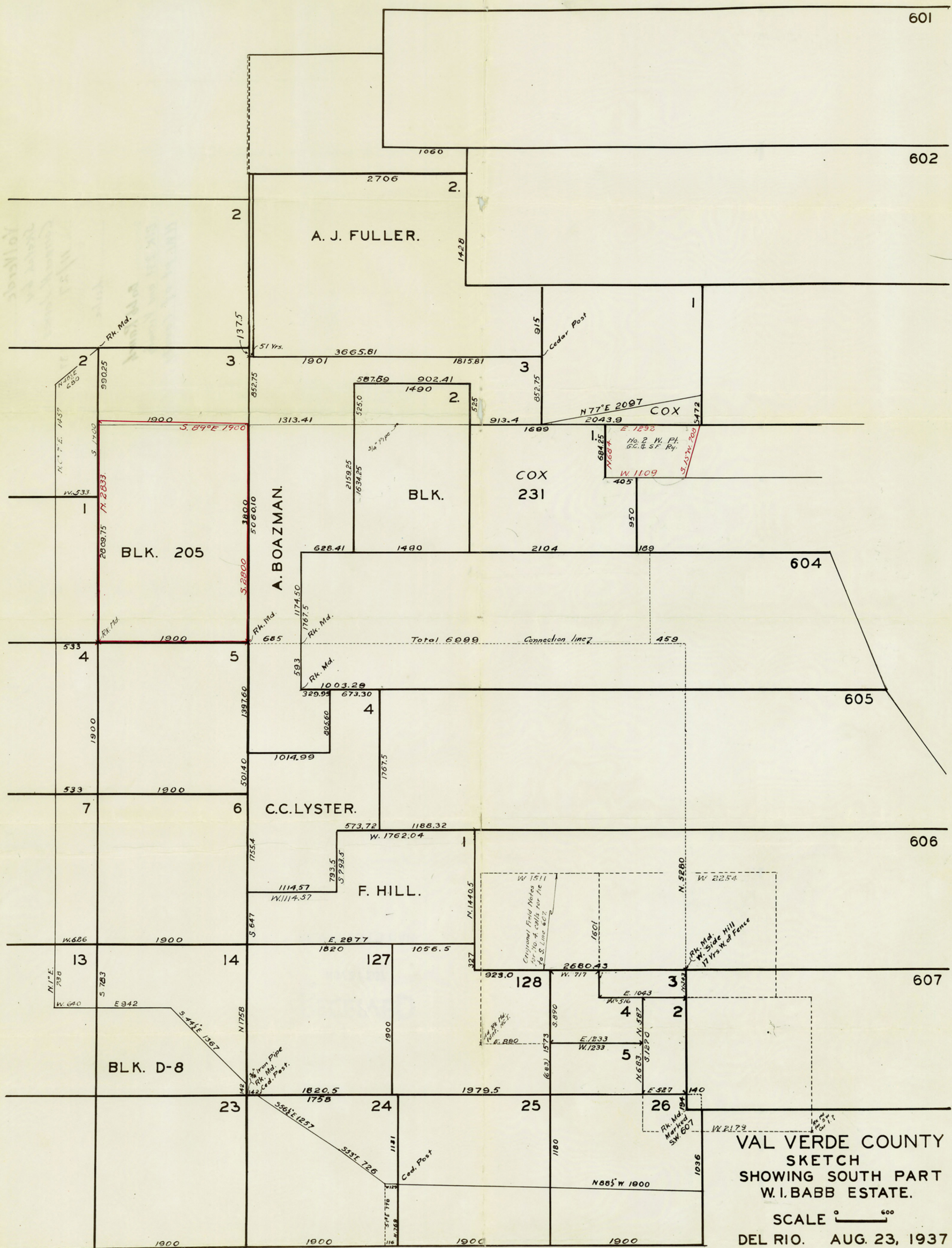
H. Conger Jones
 Surveyor of Val Verde County,
 Fort W. Tex., 11/20/37.

SKETCH
 SHOWING SURVEY NO. 3 AMANDA BOAZMAN
 AND SURVEY NO. 2, BLK. 281, G.C.S. &
 F. Ry.

VAL VERDE COUNTY, TEXAS
 Scale:- 1" = 600 yds.
 Copied from Deeds leading File 4-28

6970

4-33



VAL VERDE COUNTY
 SKETCH
 SHOWING SOUTH PART
 W.I. BABB ESTATE.

SCALE 0'' = 600'
 DEL RIO. AUG. 23, 1937
 H. CONGER JONES
 FILE 4-33

*J. H. Conger Jones Surveyor of Val Verde County
 certifies that this is a true sketch of actual conditions
 as found them on the ground.
 H. Conger Jones.*

SEE SK. FILE # 36