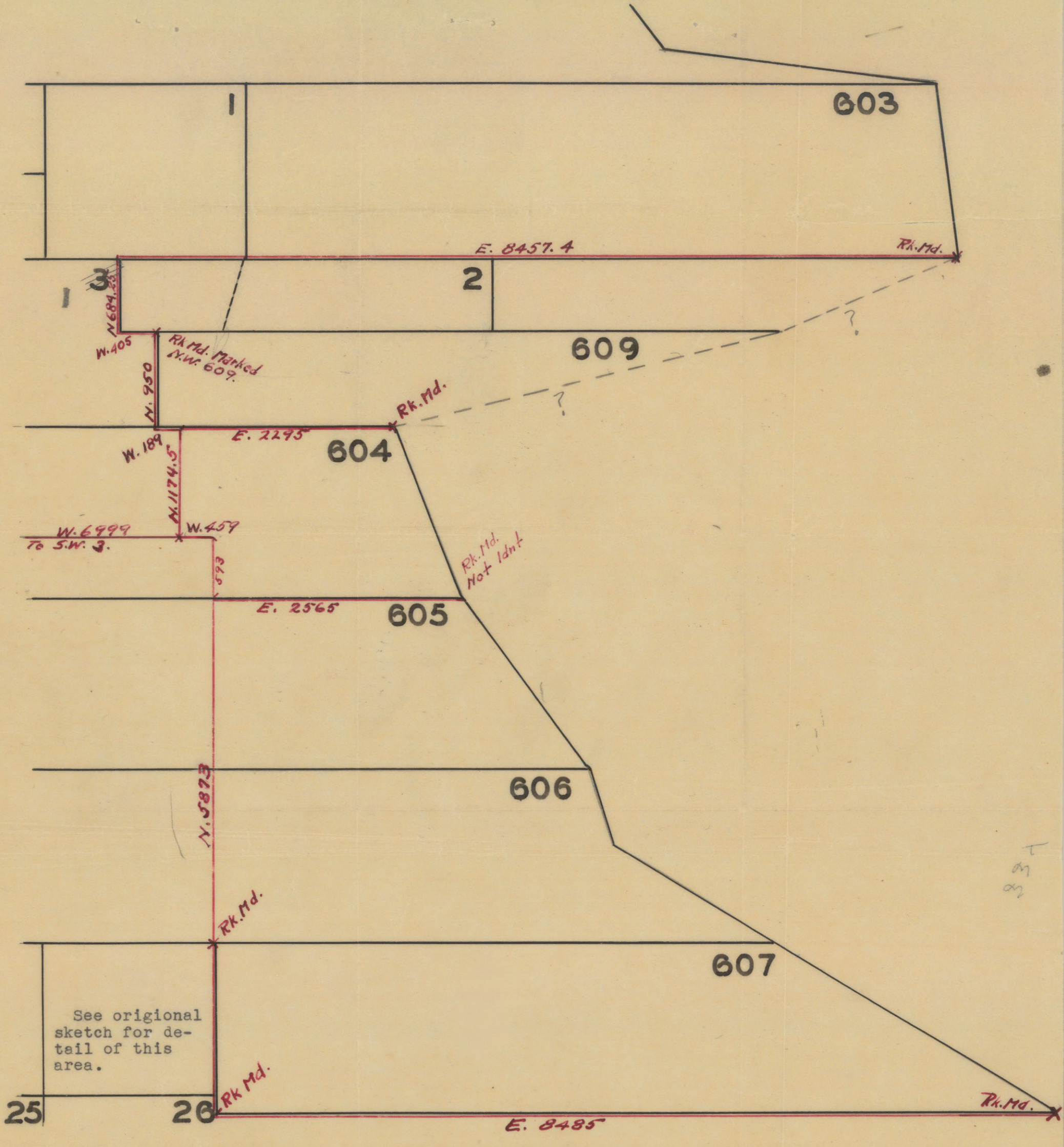


88300



337

RECEIVED TO WVP

DEC 15 1937

RECEIVED

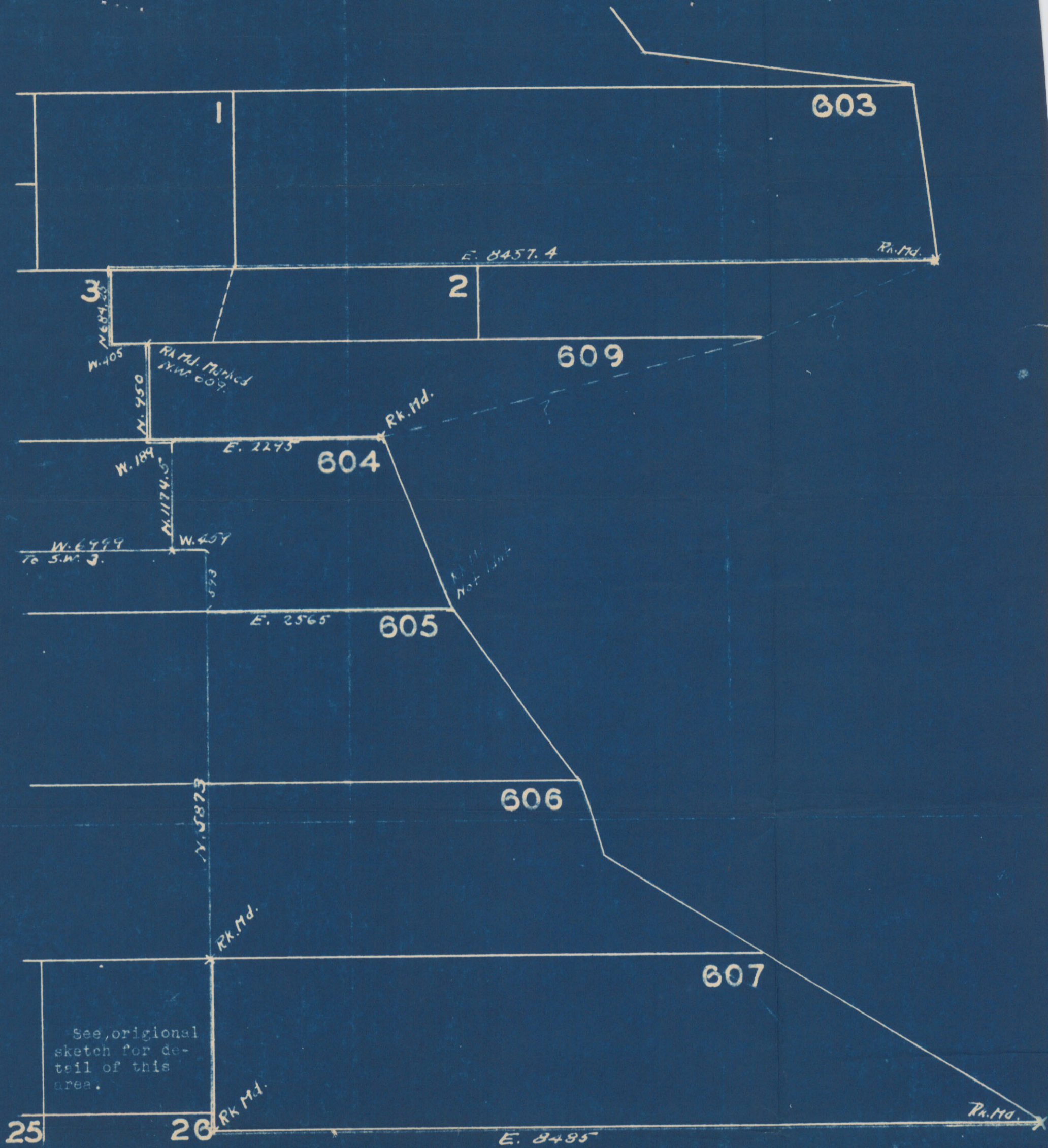
**VAL VERDE CO.
SUPPLEMENTAL SKETCH**

Showing connection lines between corners of Pecos County School Land. This sketch supplemental to H.C.J. File 4-33. August 1937.

Del Rio, Texas. Scale:- 1" 1000 Vrs. Sept. 1937.

I, H. Conger Jones, Surveyor of Val Verde County do hereby certify that this is a correct sketch of connection lines run by myself and shows land marks just as I found them on the ground.

H. Conger Jones



VAL VERDE CO. SUPPLEMENTAL SKETCH

Showing connection lines between corners of Pecos County School Land. This sketch supplemental to H.C.J. File 4-33. August 1937.

Scale:- 1" 1000 Vrs. Del Rio, Texas. Sept. 1937.

I, H. Conger Jones, Surveyor of Val Verde County do hereby certify that this is a correct sketch of connection lines run by myself and shows land marks just as I found them on the ground.

H. Conger Jones

Sketch File No. 36

Val Verde County

Sur. Conger Jones

Sketch

Filed Dec 17 1937

WM. H. McDONALD, Com'r

Leslie
File Clerk

Descriptive: Pecos Co. School
Land and River ties
NW part of County

Boys