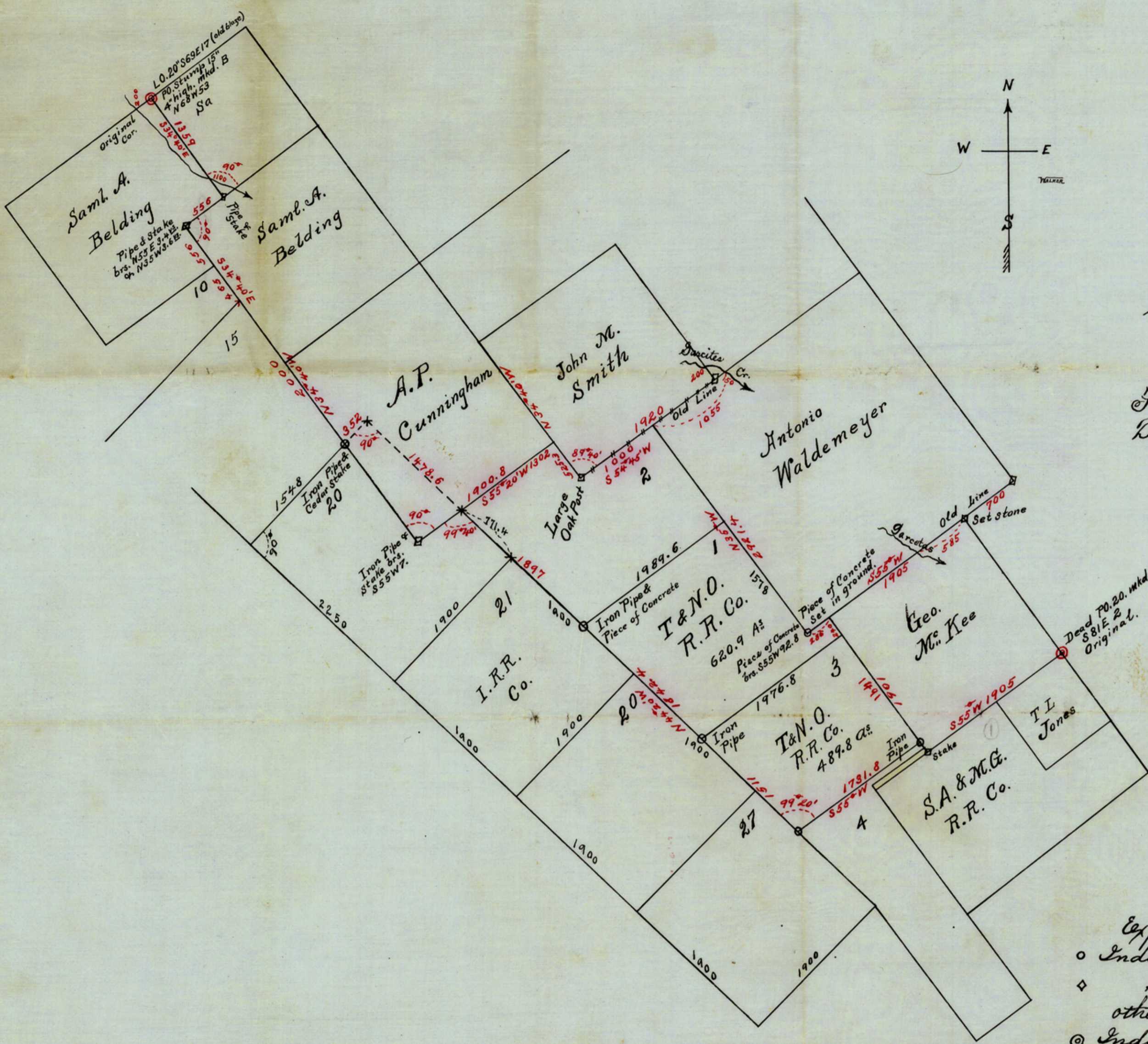


Original Plat filed
 -1887-
 Copy of plat of A.M.M.
 -1887-
 -1887-
 -1887-



Sketch
 Victoria County
 Texas.
 Filed in Genl. Land Office
 Decr. 2nd 1902
 Louis Billise
 Chief Draftsman.

Scale 1000 varas.
 to the inch
 Va. 8° 45' E.

Explanation
 ○ Indicates Corners made by me
 ◇ " Corners made by other Surveyors.
 ⊙ Indicates original Corners well identified by bearings
 Courses and distances in red ink indicates Courses & distances actually run on ground.

I, Geo. M. Williams, State Surveyor, do hereby certify that this sketch shows the surveys as found on the ground and all courses and distances as shown thereon, are correct. Given under my hand at San Antonio, Texas, this 28th day of Oct., 1902
 Geo. M. Williams
 State Surveyor.

COUNTY # 18291