

STATE OF TEXAS.
County of Webb.

I, E. J. Foster, County Surveyor of Webb Co., Texas,
do hereby certify that the foregoing Map is true
and correct and acreage carefully calculated
and that same was made on the ground July 22-27-1912
Witness my hand this 10th Oct. 1912 E. J. Foster
County Surveyor of Webb County Texas.

MAP

SHOWING H.C. YAEGER'S LANDS IN
LASALLE, M'MULLEN, WEBB
AND DUVAL COUNTIES

AS FOUND BY ACTUAL SURVEY ON
THE GROUND MADE BY E. J. FOSTER
COUNTY SURVEYOR OF WEBB COUNTY,
TEXAS.

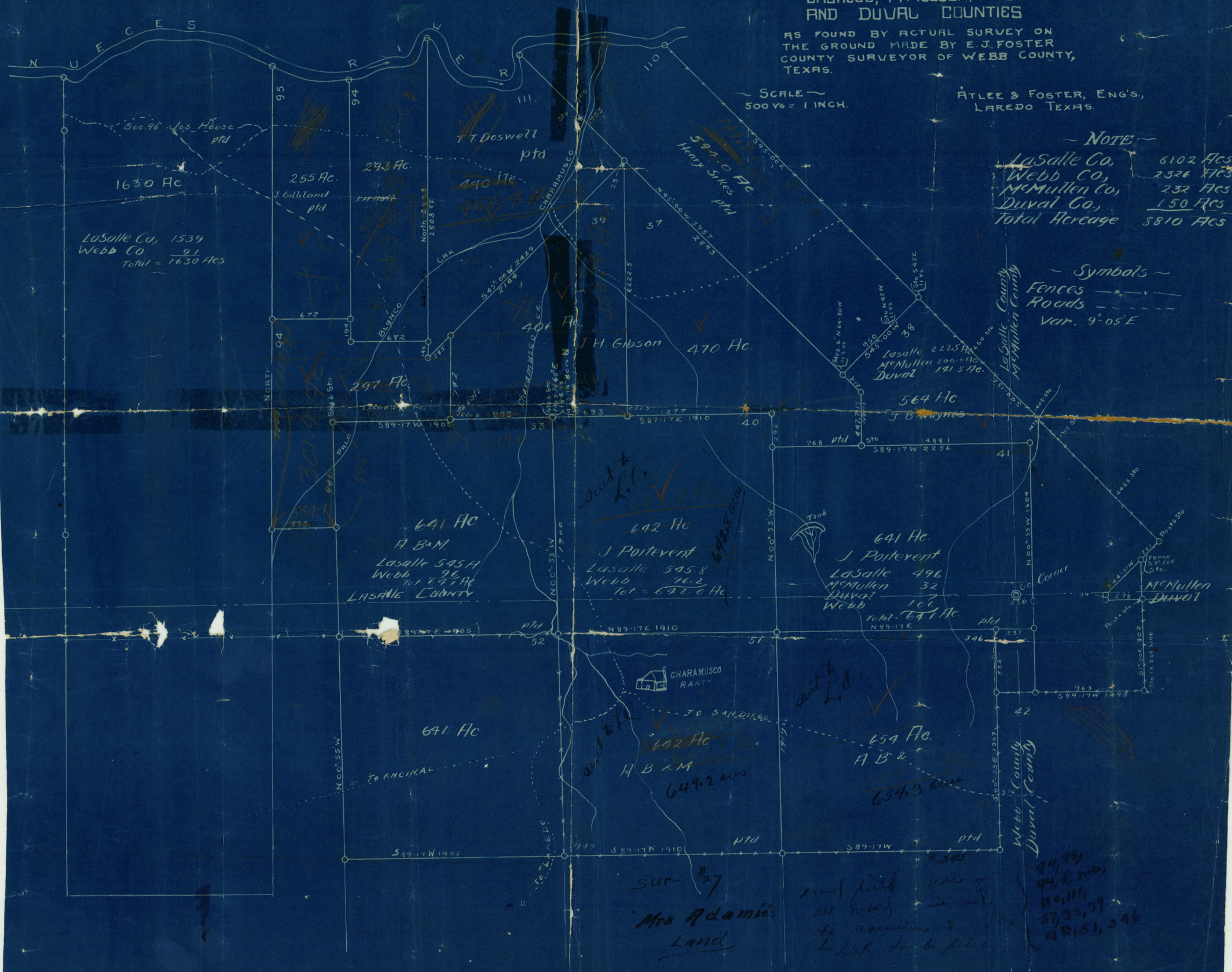
SCALE
500 Yds = 1 INCH.

ATLEE & FOSTER, ENGS.,
LAREDO TEXAS.

NOTE

LaSalle Co,	6102 Acs
Webb Co,	2326 Acs
M'Mullen Co,	232 Acs
Duval Co,	150 Acs
Total Acreage	8810 Acs

Symbols
Fences ———
Roads ———
Var. 9° 05' E



LaSalle Co, 1539
Webb Co, 91
Total = 1630 Acs

3019.95

out to L.B.
642 Ac
J. Portevent
LaSalle 545.8
Webb 96.2
Tot = 642.0 Ac

out to L.B.
654 Ac
A.B. & ...
649.3 acs

SUR-127
"Mrs Adamie's
Land"

and field ...
all ...
to ...
to be filed

94, 95
94, 95
110, 111
87, 38, 39
40, 51, 54, 6