

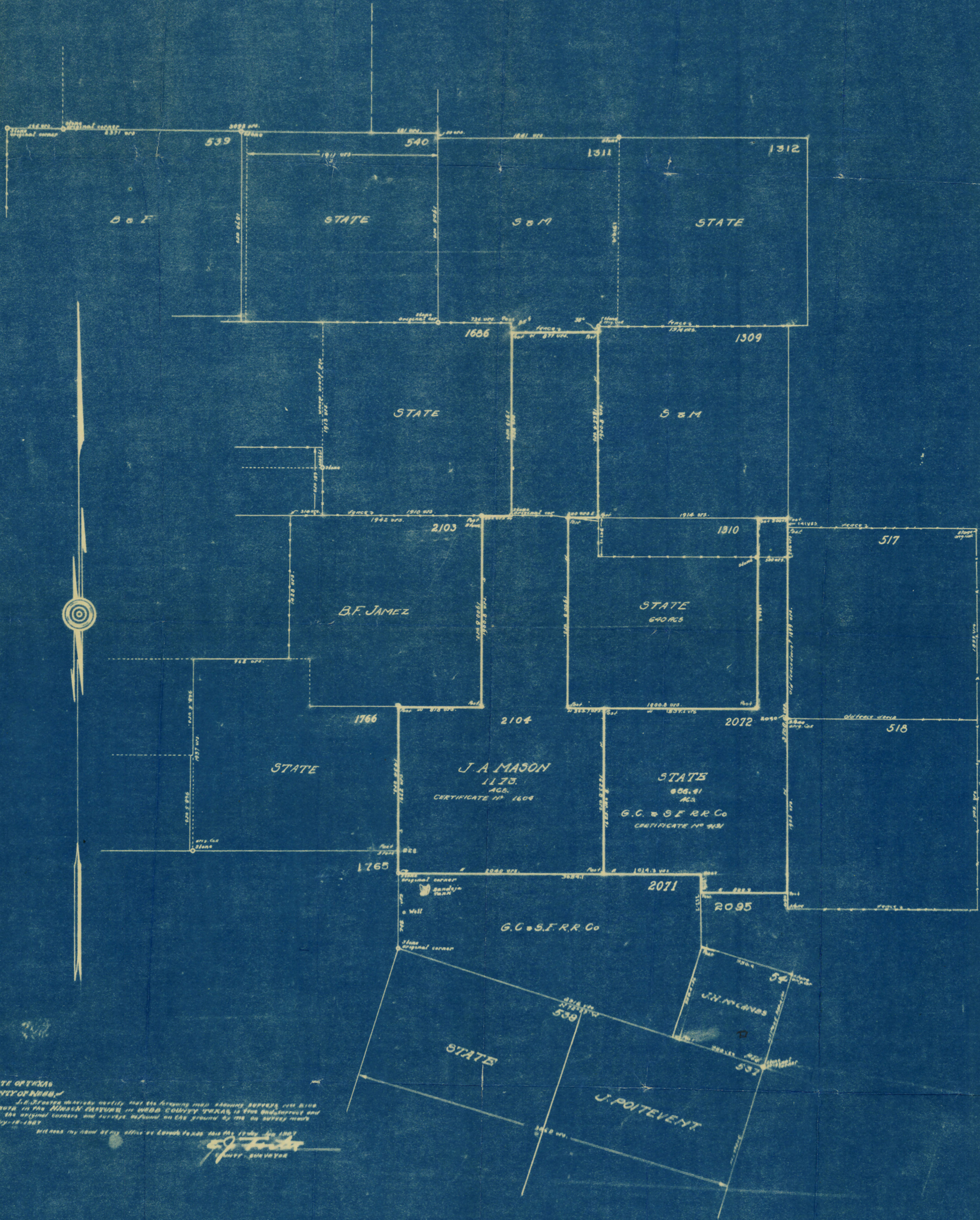
# WEBB COUNTY SKETCH

SHOWING  
SURVEYS CLEAR OF CONFLICT

PREPARED JANUARY, 1917

Scale One inch = 400 ft.

Created by *Richard L. Dyer*  
S. J. Poitevent  
State Licensed Land Surveyor



STATE OF TEXAS  
COUNTY OF WEBB

I, *Richard L. Dyer*, Surveyor, do hereby certify that the foregoing map showing surveys and lines and notes on the original corners and surveys shown on this sketch were prepared and shown to the original corners and surveys shown on this sketch on the 12th day of January, 1917.

Witness my hand and the seal of my office at Brownsville, Texas, this 12th day of January, 1917.

*Richard L. Dyer*  
Surveyor