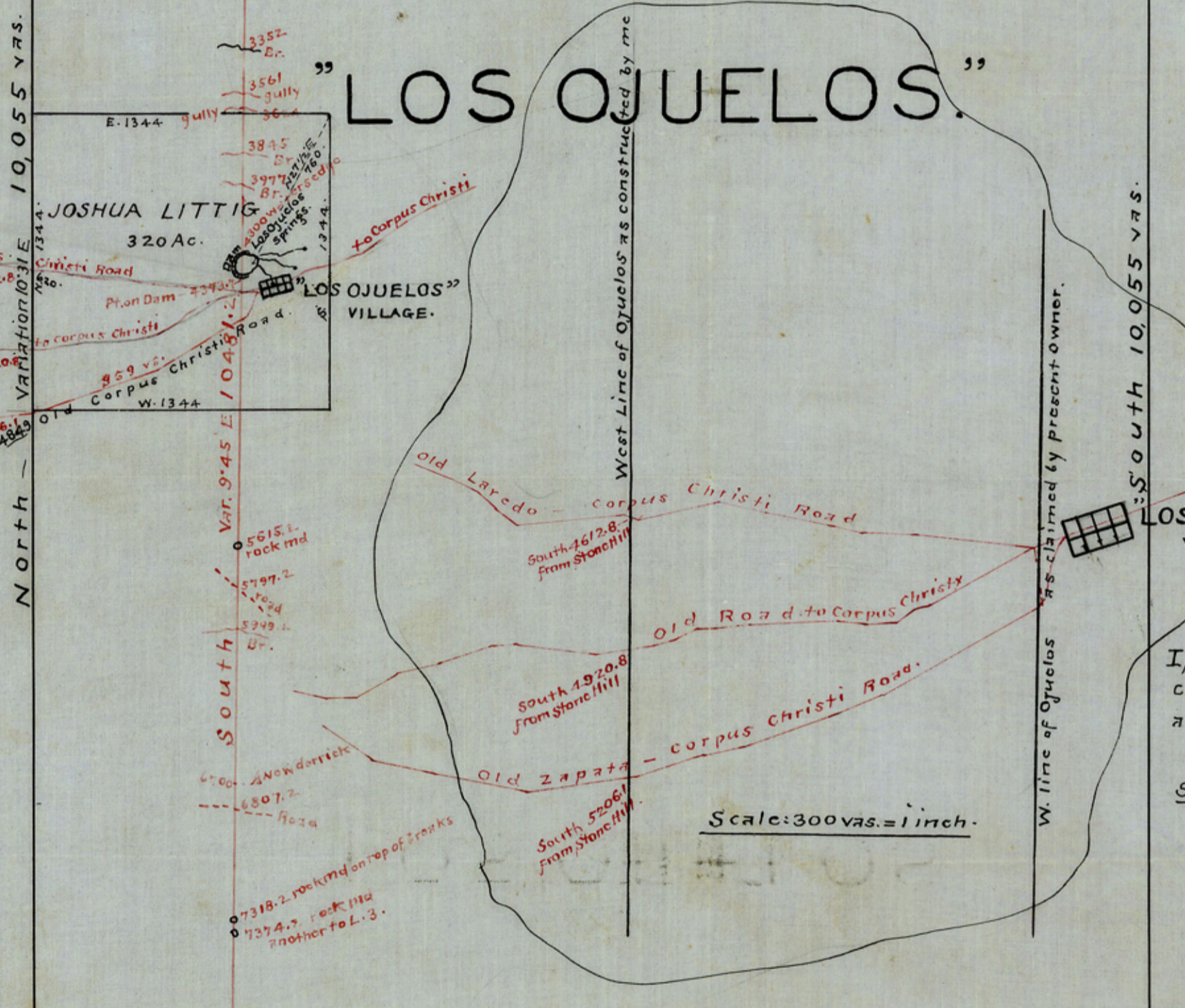


"LOS OJUELOS"



I, M.V. Homeyer, Licensed State Land Surveyor, do hereby certify, that this sketch is a true and correct representation of my late Survey of lands in Webb Co. as shown hereon. Survey was made May 14, 15 & 16th 1923. Scale: 600 yds = 1 inch.

M. V. Homeyer,
Licensed State Land Surveyor.

605.
G. C. & S. F. R. Y. CO.

W. H. THAXTON. - 587 Ac.

EUSEBIO GARCIA.

G. C. & S. F. R. R. CO.

Filed in G.L.C. - 6/15/23
Blueler
SF 12642
Contents No 7