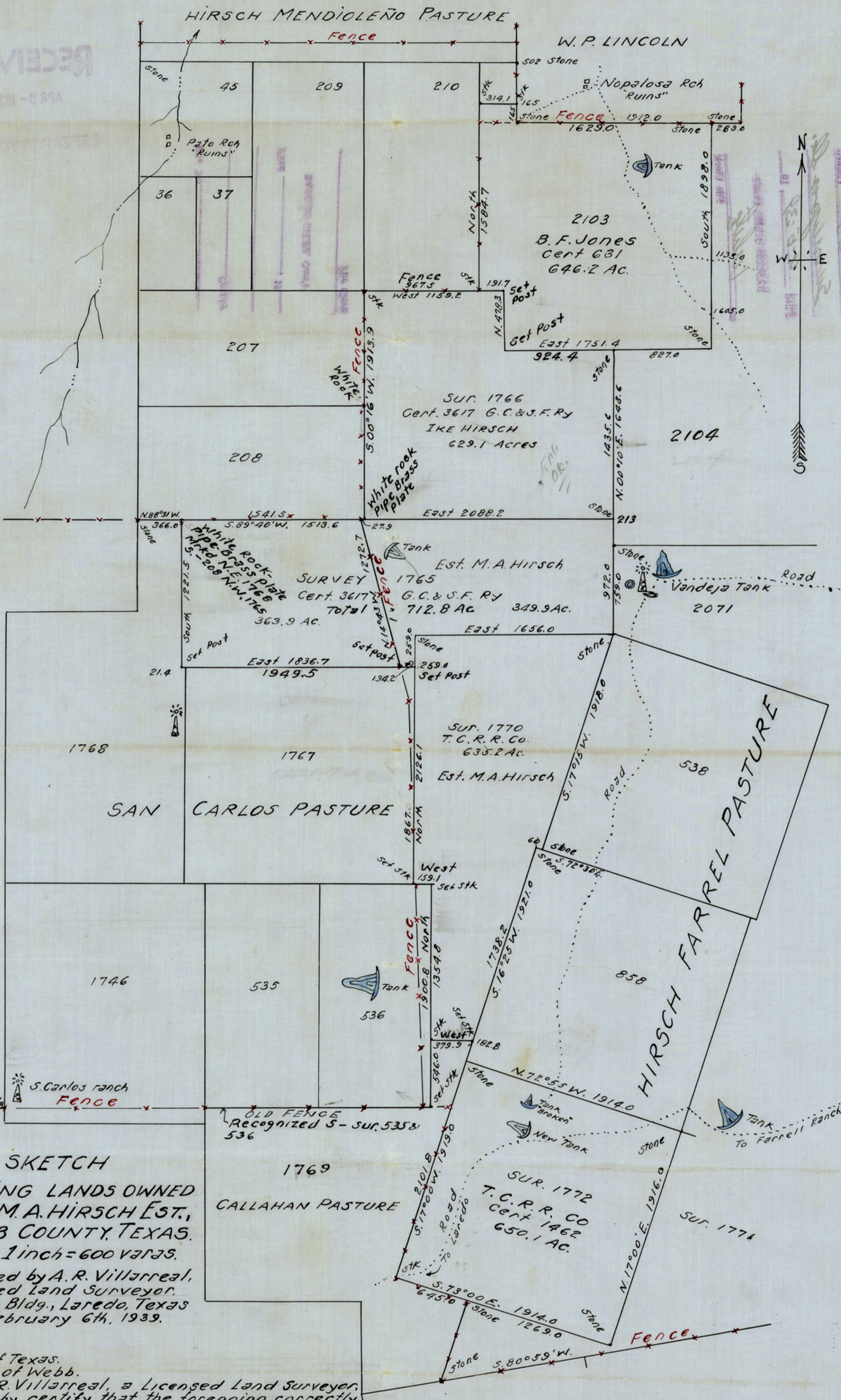


RECEIVED
APR 2 - 1939



SKETCH
 SHOWING LANDS OWNED
 BY THE M. A. HIRSCH EST.,
 IN WEBB COUNTY, TEXAS.
 Scale 1 inch = 600 varas.
 Surveyed by A. R. Villarreal,
 Licensed Land Surveyor,
 Thaison Bldg., Laredo, Texas
 February 6th, 1939.

State of Texas.
 County of Webb.
 I, A. R. Villarreal, a Licensed Land Surveyor,
 do hereby certify that the foregoing correctly
 represents results of surveys made by me
 on the ground on January 10th to 20th A.D. 1939
 and is true and correct to the best of my
 knowledge and belief.
 Witness my hand this the 6th day of
 February A. D. 1939.

A. R. Villarreal
 Licensed Land Surveyor.