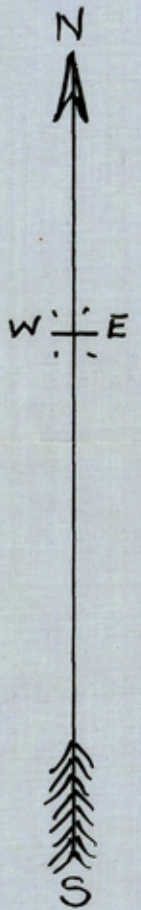
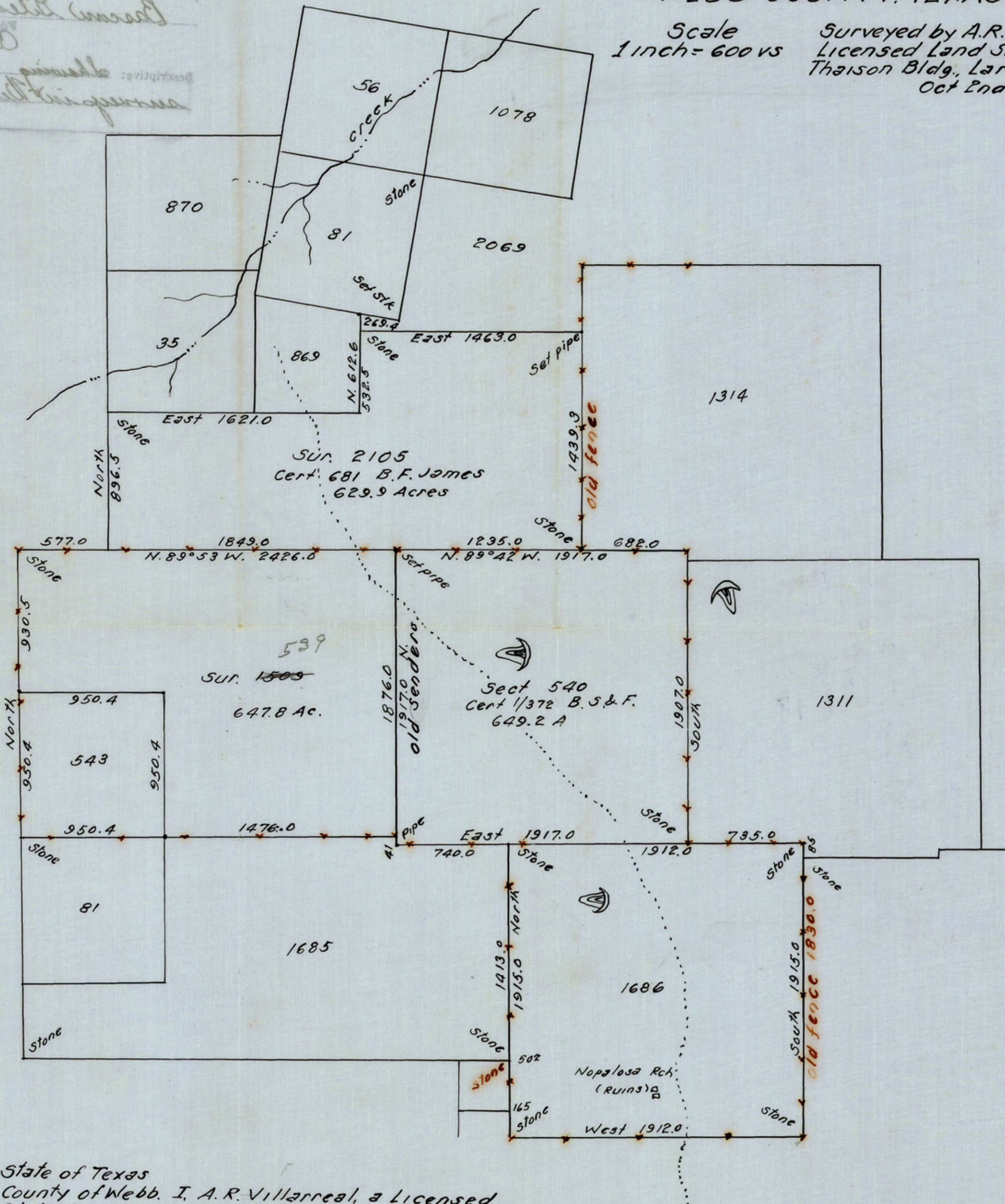


SKETCH  
SHOWING SURVEYS IN  
WEBB COUNTY, TEXAS.

Scale  
1 inch = 600 vs

Surveyed by A.R. Villarreal,  
Licensed Land Surveyor,  
Thaison Bldg., Laredo, Texas.  
Oct 2nd, 1939.



State of Texas  
County of Webb, I, A.R. Villarreal, a Licensed  
State Land Surveyor, do hereby certify that  
the foregoing correctly represents results of  
surveys made by me on the ground on  
Sept 20th to 25th A.D. 1939 and is true and correct  
to the best of my knowledge and belief  
Witness my hand this the 22nd day of  
October A.D. 1939  
*A.R. Villarreal*  
Licensed Land Surveyor,

RECEIVED

OCT 17 1939