

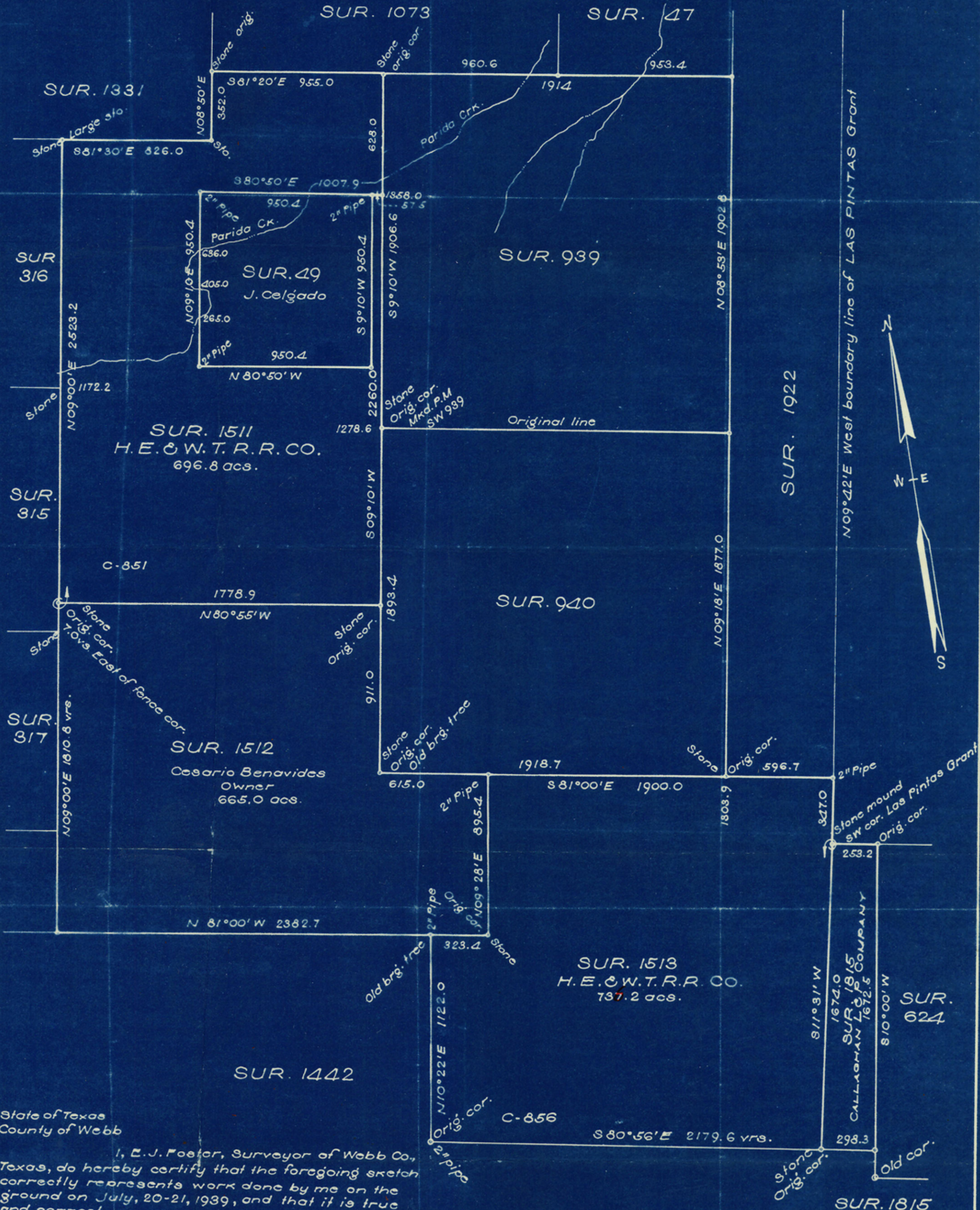
WEBB CO. SKETCH

OF
LANDS OWNED BY CALLAGHAN L. & P. CO.
39 MILES N.E. OF LAREDO

Surveyed July, 20th - 21st, 1939.

by
E. J. Foster
Surveyor of Webb Co. Texas.

SCALE: 1" = 500 VRS.



State of Texas
County of Webb

I, E. J. Foster, Surveyor of Webb Co.,
Texas, do hereby certify that the foregoing sketch
correctly represents work done by me on the
ground on July, 20-21, 1939, and that it is true
and correct.

Witness my hand at Laredo, Webb Co.,
Texas, this the 2nd. day of January, A.D. 1940.

E. J. Foster
E. J. Foster
Surveyor of Webb Co. Texas.