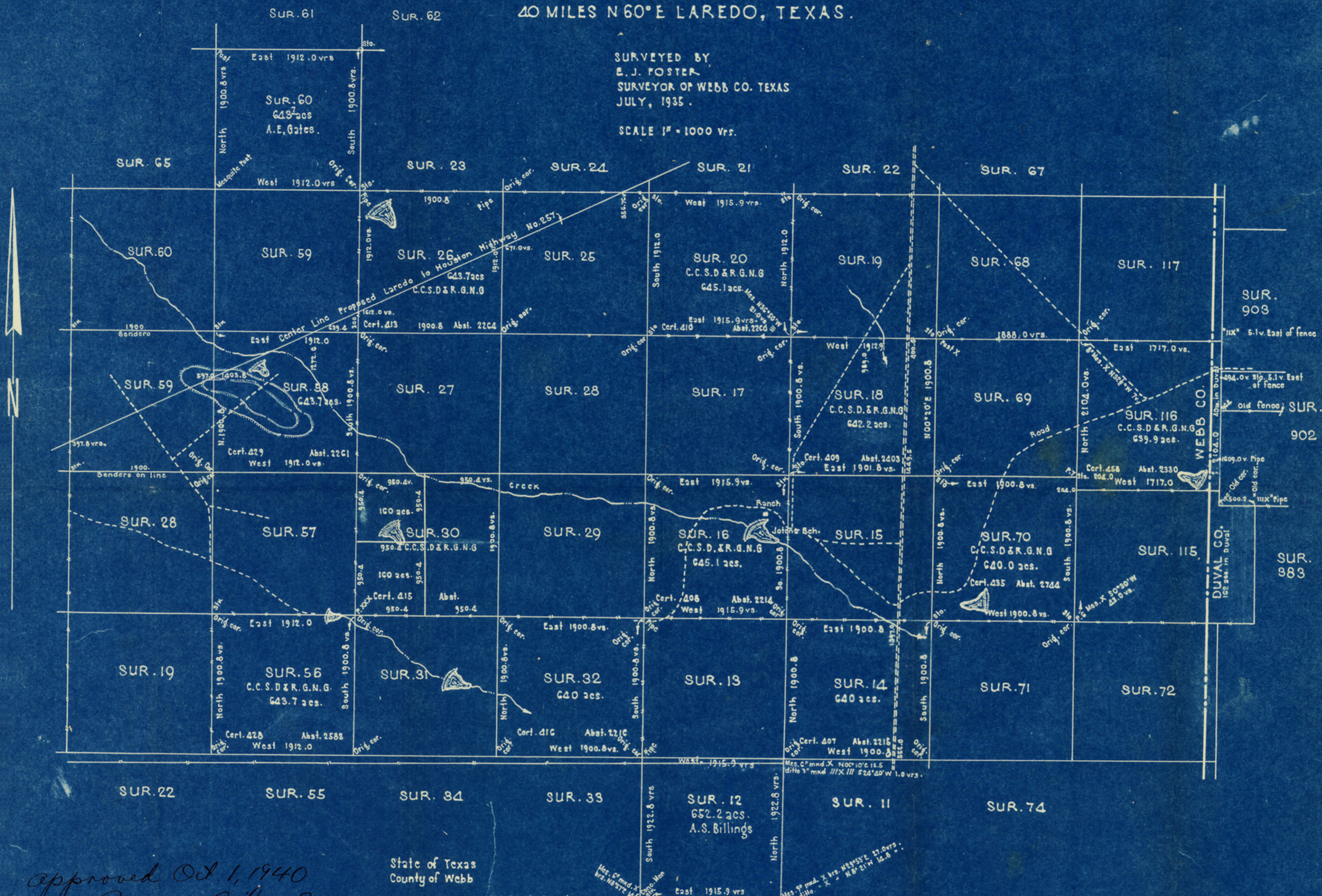


WEBB COUNTY SKETCH OF ORAN G. KIRKPATRICK'S RANCH 40 MILES N 60° E LAREDO, TEXAS.

SURVEYED BY
E. J. FOSTER
SURVEYOR OF WEBB CO. TEXAS
JULY, 1935.

SCALE 1" = 1000 Yrs.



Approved Oct. 1, 1940
Bascom C. Coker, Comm.
by M. Von Rosenberg
Examining Engineer

State of Texas
County of Webb

I, E. J. Foster, Surveyor of Webb County, Texas, do hereby certify that the above and foregoing is a true and correct map of school surveys in the Kirkpatrick Ranch in Webb County, Texas, and that all corners shown are those known to be the original and recognized corners of the surveys as found by me on the ground by actual survey made July, 20th to 27th, A.D. 1935.

Witness my hand at Laredo, Webb County, Texas, this the 12th day of September, A.D. 1940.

E. J. Foster
Surveyor of Webb County, Texas.