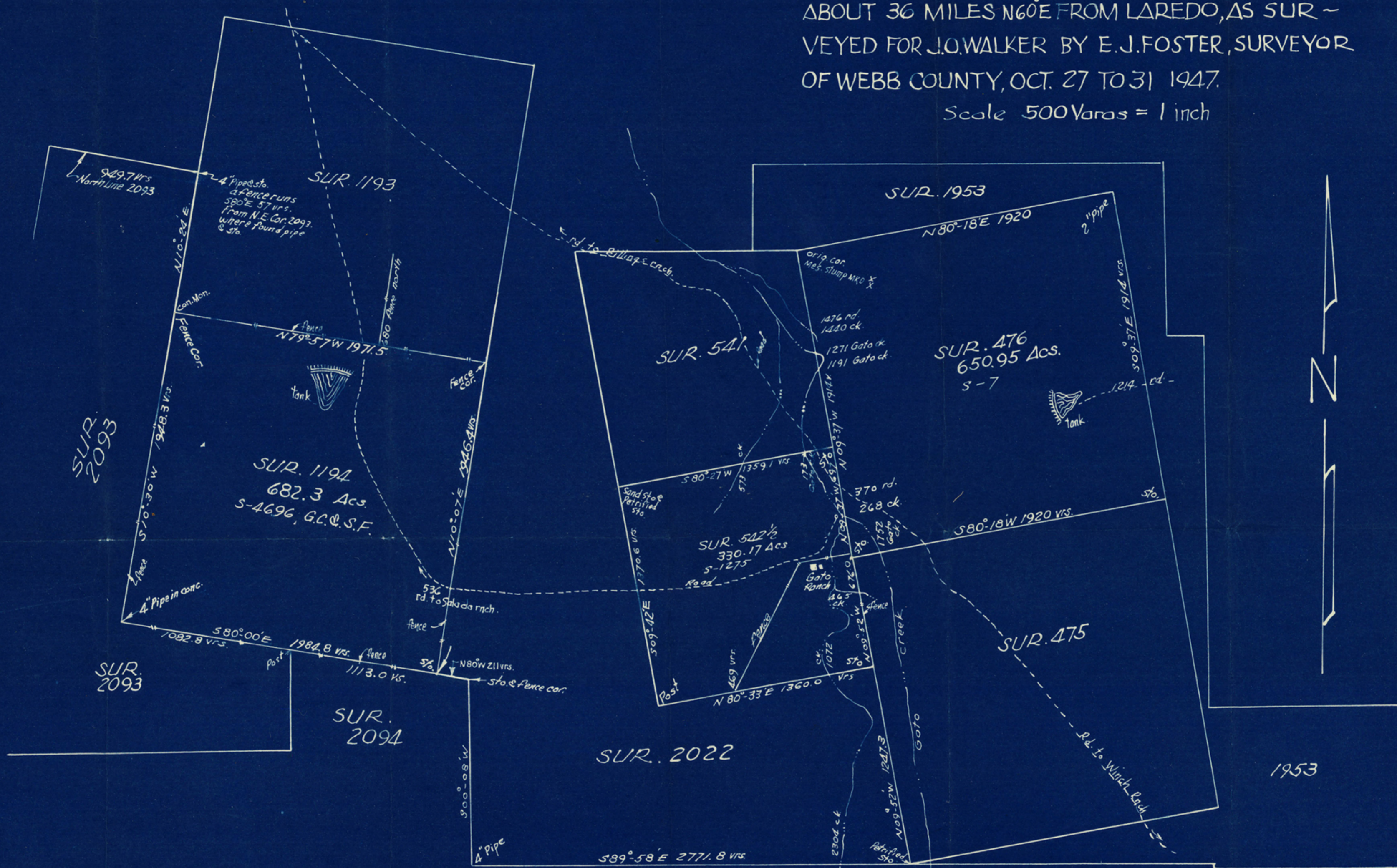


WEBB COUNTY SKETCH
 SHOWING SURVEYS 1194 - 542½ - 476 LOCATED
 ABOUT 36 MILES N60°E FROM LAREDO, AS SUR-
 VEYED FOR J.O. WALKER BY E.J. FOSTER, SURVEYOR
 OF WEBB COUNTY, OCT. 27 TO 31 1947.

Scale 500 Varas = 1 inch



State of Texas
 County of Webb
 I, E.J. Foster surveyor of Webb County, do hereby
 Certify that the foregoing sketch truly represents the
 results of a survey made by me on the ground of
 sections 1194 - 542½ & 476 - Webb County Tex. and
 that it is true and correct according to law.
 Given under my hand and seal of office at Laredo,
 Webb Co. Tex. this 23 day of Dec. A.D. 1947.

E.J. Foster
 E.J. Foster, Surveyor of Webb Co.