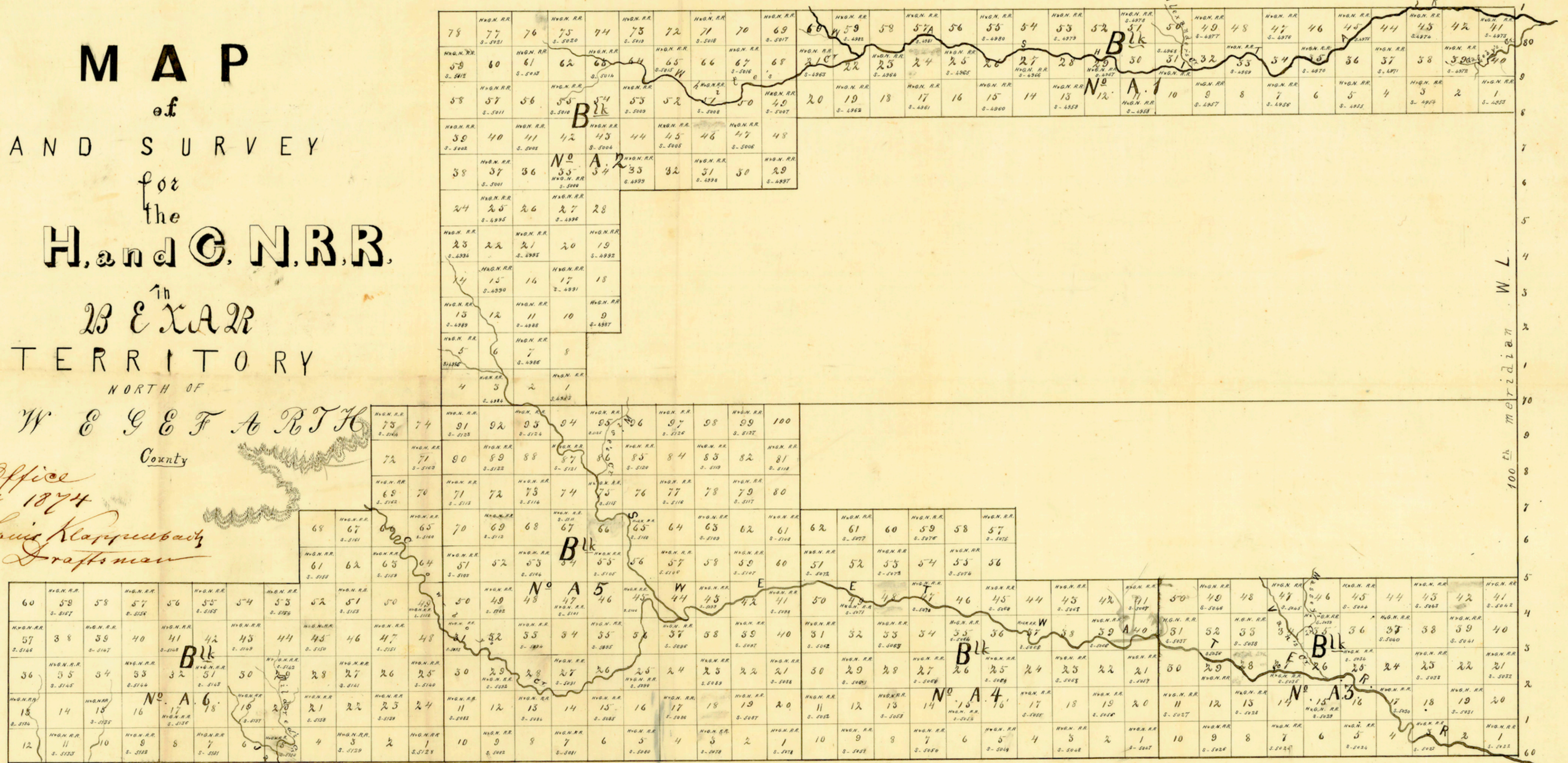




M A P
 of
LAND SURVEY
 for
 the
H. and C. N. R. R.
 in
B E X A R
T E R R I T O R Y
 NORTH OF
W E G E F A R T H
 County

Filed in Office
January 2^d 1874
Louis Kappenberg
Draftsman



1874 Jan 2
 Louis Kappenberg
 Draftsman