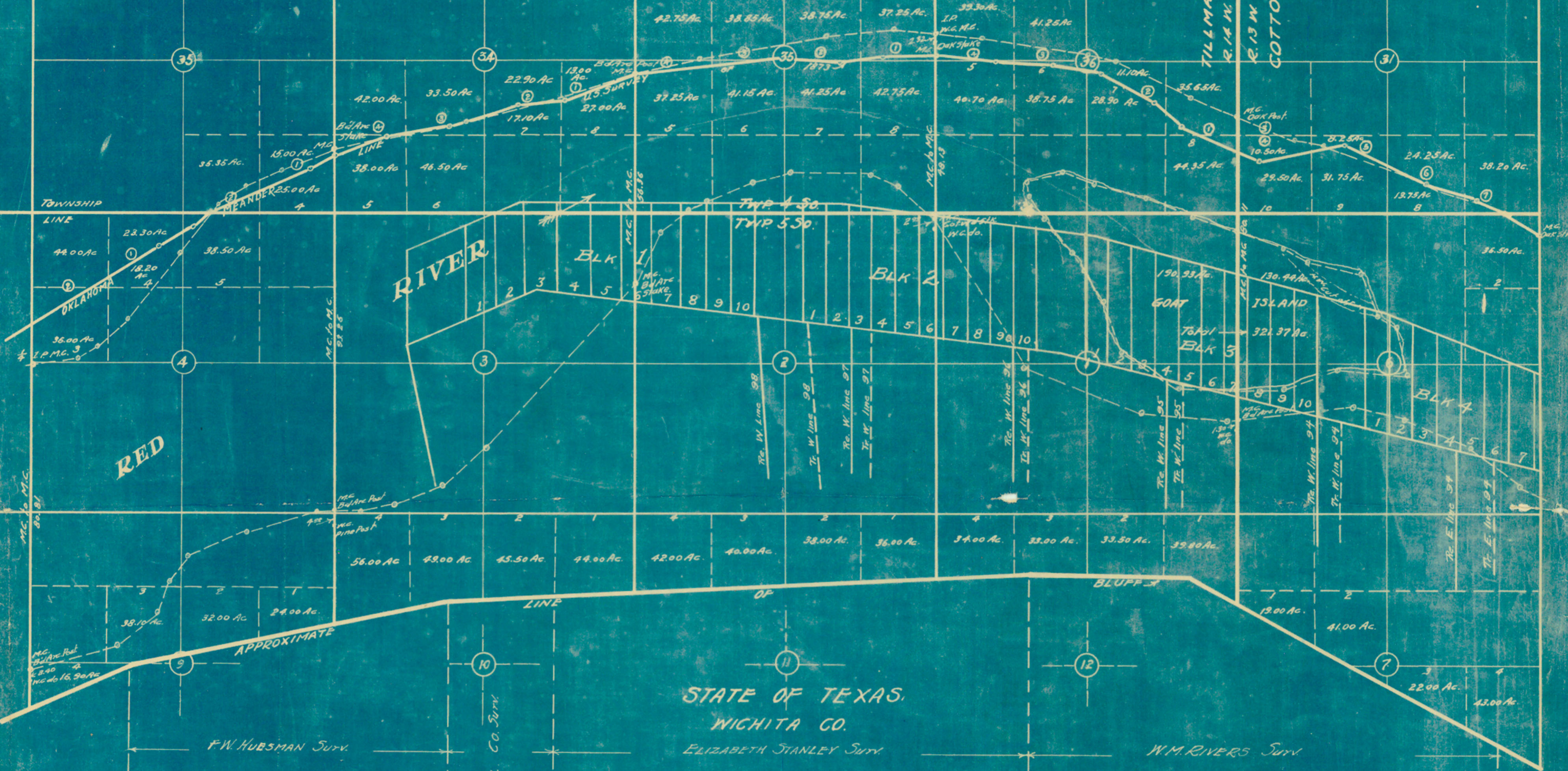


STATE OF OKLAHOMA  
TILLMAN CO.

TILLMAN CO.  
R. 14 W.  
R. 13 W.  
COTTON CO.



STATE OF TEXAS,  
WICHITA CO.

ELIZABETH STANLEY SURV

PORTION OF  
RED RIVER

SHOWING SECTION LINES PRODUCED  
TO SOUTH SIDE

6/11, 1918.

W.P. Danford, C.E.  
Oklahoma Cy., Okla.