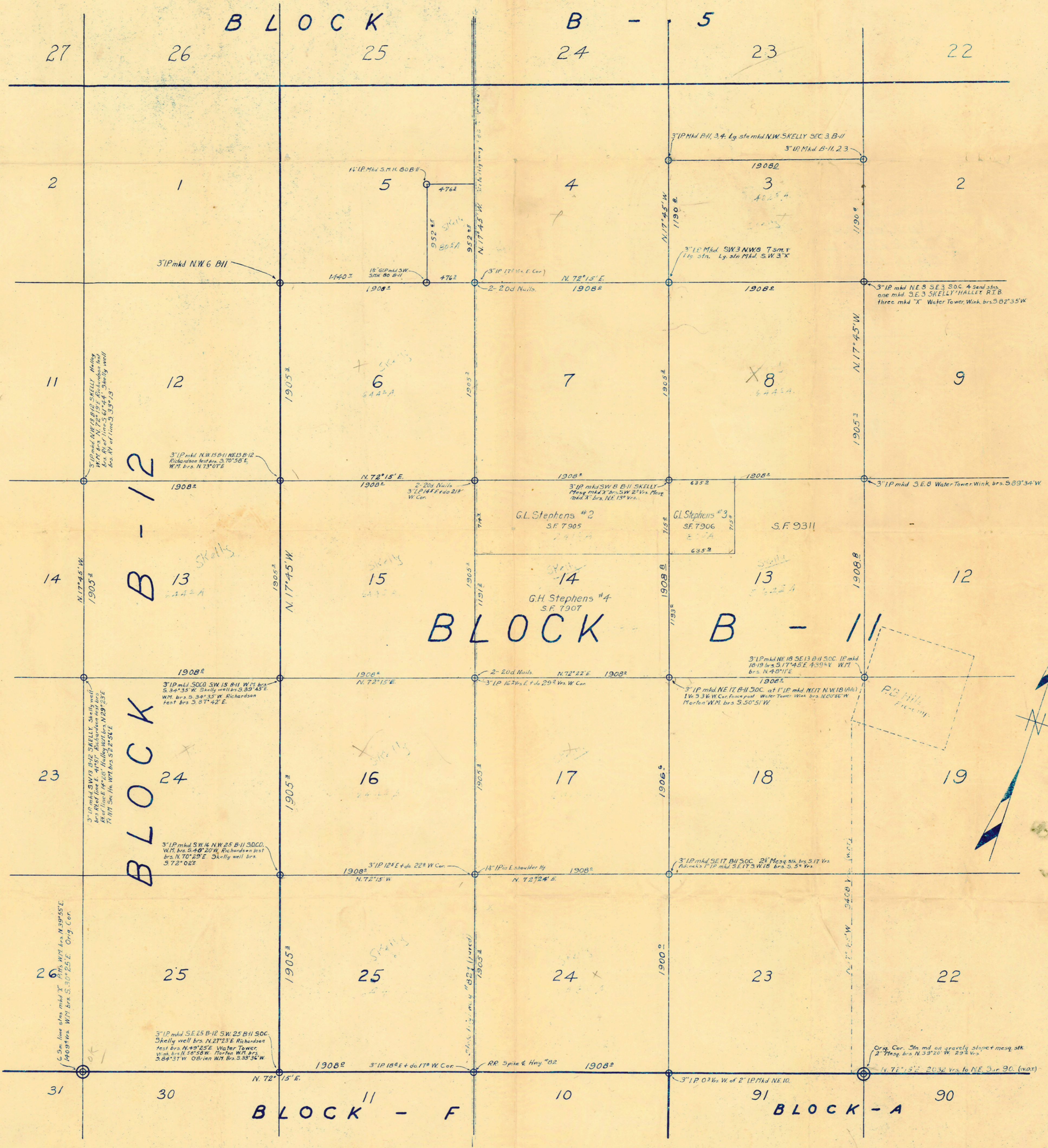


PLAT IN WINKLER COUNTY, TEXAS

Scale: 1 Inch=500 Vrs.



I hereby certify that the hereon plat is true and correct as surveyed by me on the ground.
This the 27th day of Sept. A.D. 1934.

R.T. Buey
LICENSED LAND SURVEYOR, MIDLAND COUNTY, TEXAS