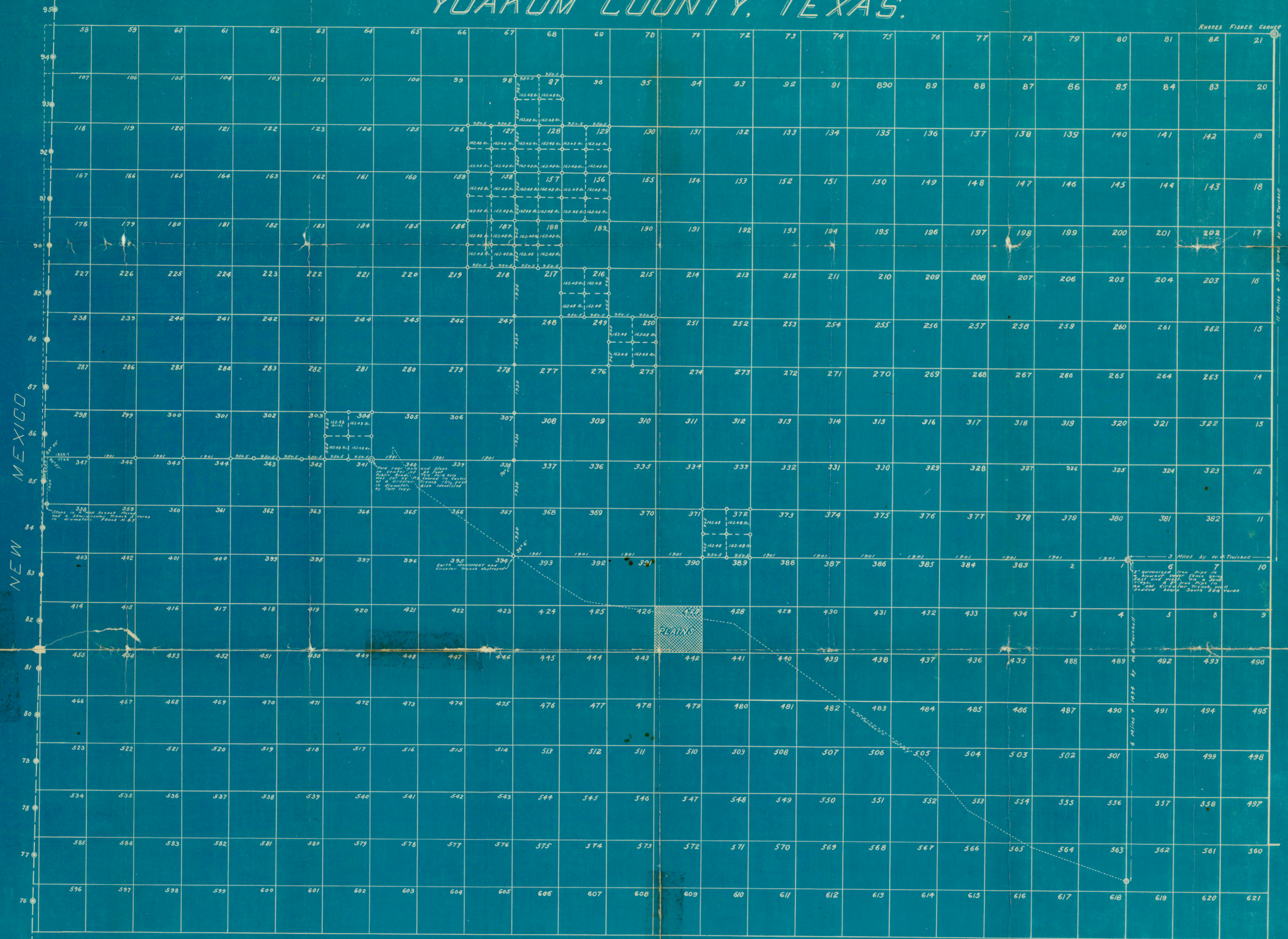


MAP SHOWING LANDS SURVEYED BY  
**SYLVAN SANDERS**  
 LICENSED LAND SURVEYOR  
 IN  
**BLOCK D**  
**YOAKUM COUNTY, TEXAS.**



I, SYLVAN SANDERS, Licensed Land Surveyor, do hereby  
 certify that this map is true and correct.  
 Sylvan Sanders  
 Licensed Land Surveyor

○ = 3/4 Iron Pipe set by Sylvan Sanders  
 ● = Corners made by W. D. Turckell in 1892  
 ⊙ = Corners found by W. D. Turckell in 1892

Received in General Land Office  
 April 23<sup>rd</sup> 1923.  
 Clark

Surveyed by Sylvan Sanders, Lubbock, Texas.