

- ZAPATA COUNTY SKETCH -

- SHOWING PORCIONES & SOCORRO GRANT -

SURVEYED BY E. J. FOSTER, 1913.

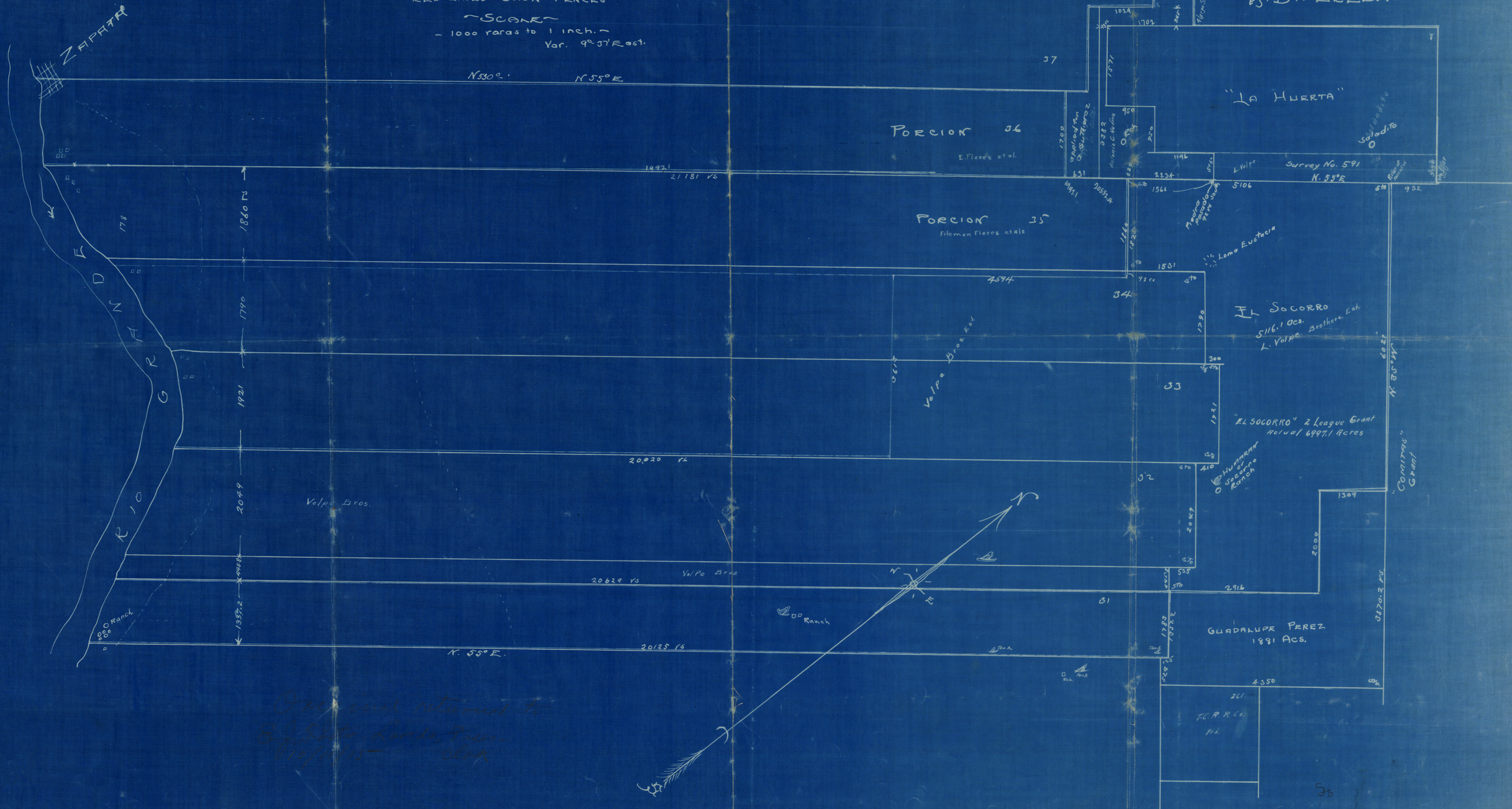
- NOTES -

ALL DISTANCES SHOWN ARE FROM ACTUAL CHAINING.  
RED LINES SHOW FENCES

- SCALE -

- 1000 yards to 1 inch. -  
Var. 9° 37' East.

This Map  
Property  
of  
E. J. Foster  
Laredo, Texas.



*Original returned to  
E. J. Foster Laredo, Texas  
10/1/15 - JEF*



South east bdry. Porcion 36.,  
Zapata County.,

STATE OF TEXAS )  
COUNTY OF ZAPATA.)

Field notes of a survey of the division line  
of Porciones Nos. 35-36, in Zapata County, Texas, as made for Antonio  
Gutierrez Medina.,

Said survey is located in Zapata County, Texas,  
on the waters of the Rio Grande river, and running north east for  
depth four leagues, (20,000 Vs).,

Beginning at a post set for the west corner of  
survey No. 591, made for the State;

Thence S 55-00'W along the division line of Porciones  
35-36, at 711, vrs pass pile of rocks which is the supposed east corner  
of Porcion No. 36, at 946 vs., pass Caliches creek, at 2495 vrs.,  
crossed road, at 4651 vs., a fence, at 4925 cross fence, at 5332,  
vs cross a fence line, at 5493 vs cross creek, at 5670.7 vrs pass a  
post which is supposed to be the third league on said Porcion line  
from the river, ~~out~~, at 6003 cross creek, at 6670.7 vs., a mezquite  
tree marked ///., at 7021 cross creek, at 7121 vs cross creek, at 7246  
vs cross creek, at 9112 cross Costa Rica Creek, at 10368 cross creek  
at 10,373 vrs cross fence, at 10,629 vrs pile of stones, supposed sec-  
ond league from river, at 11,817 vs cross Gallo creek, at 12,267 Indias  
creek, at 14,337 Rio Grande road and Laredo, at 15,238 vs cross creek,  
at 16,401 cross road, at 17,102 vs a stone in line, ~~at~~ at 17845  
a stone in line, at at 17933 vs a stone mound, on east side of road  
from Zapata to Roma., at 19,231 drop from high bluff to river walley,  
at 19,600 vrs a fence on line, at 20,189 vs a large creek and mezquite  
marked "D"., at 20,552.4 vs., the east bank of the river and the south  
corner of Porcion No., 36 and west corner of Porcion No. 35.,

The calls for the south line of Porcion 36 according to  
the decree of court is 19,921 vs, the line runs 20,552.4 vrs., which  
tives it a strip of 631 vrs., between ~~the~~ its east corner, and where  
the west ~~xxxxxx~~ corner of section 591.

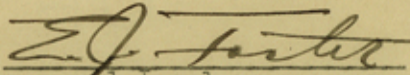
Surveyed May 22, 1911.,  
Var N 10-00'E

Jose Ma, Garcia.,  
Chainmen  
Juan Gutierrez Medina.

I, E. J. Foster, surveyor of Webb County, Texas, do hereby certify  
that the above and foregoing survey was made by me according to law,  
on the ground, and that the limits boundaries and corners, with their  
marks natural and artificial are truly described in the foregoing Plat  
and field Notes just as I found it on the ground.  
Witness my hand this the 23 day of May. A. D., 1911/.

Signed. E. J. Foster.,  
Surveyor of Webb County, Texas.,

State of Texas.,  
County of Webb, I, E. J. Foster, a Licensed Land surveyor do hereby  
certify that the above and foreging field notes is a true and correct  
copy, of the original as used in the case of Flotes Vs., Medina., in  
in the Webb County District Court., to determine whether or not suffi-  
cient land existeds between Porciones 36 and the "a Huerta Grant in  
Zapata County to al ow survey 591 to remain as surveyed by the original  
survey, and on which the Hon. Dist Court acted and decieed in favor  
of A. G. Medina the Purchaser of survey 591 from the State and is now  
in actual possession and ownership of said section as it is shown on  
the map and surveyed by me according to its original field notes, and  
the remaining area beyond the limits of this survey 591 and Porcion 36  
being the part of survey 554 clear of conflict with Porcion No. 36.  
Given under my hand and seal of office at Laredo, Texas., this the  
20 Day of Dec., A. D., 1930.,

  
Licensed Land surveyor.,